



**LIGHT^{MY}
BRICKS**



**LEGO HORIZON FORBIDDEN WEST
TALLNECK #76989 LIGHT KIT**

INSTALLATION GUIDE

Light My Bricks



LEGO HORIZON FORBIDDEN WEST TALLNECK 21332 INSTALLATION GUIDE

Hi There!

We're here to help you get started on the LEGO Horizon Forbidden West Tallneck 21332 Light Kit.

This PDF details the instructions for the LED light kit only.

If you run into any issues, please refer to the troubleshoot-ing section towards the end of this guide.

Have fun and enjoy!

INSTALLATION GUIDE





PACKAGE CONTENTS:



- 4 x Warm White 30cm Large Bit Lights
- 2 x Red & Blue 15cm Bit Light
- 2 x Blue 30cm Bit Light
- 1 x Warm White Strip Light



- 1 x 8-Port Expansion Board
- 1 x 6-Port Expansion Board
- 1 x 2-Port Expansion Board
- 3 x Adhesive Squares



- 1 x 50cm Connecting Cable
- 1 x 30cm Connecting Cable
- 1 x 15cm Connecting Cable



- 1x USB Power Cable

ASSORTED BRICKS:

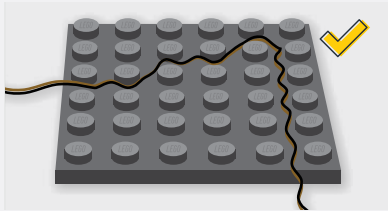


- 4 x Round Tile 1x1 - Clear
- 4 x 1x1 Bracket - Light Grey
- 1 x 1x2 Brick - Black
- 4 x Arm Skeleton, Bent with Clips (Horizontal Grip) - Black
- 8 x Plate 1x1 Mod Rounded w Handle - Black
- 4 x Round Plate 1x1 Open Stud - Black
- 1 x Round Plate - 1x1 Trans Clear

Contents

Before You Begin	5
Blueprint	8
Instructions	10
Final Product	31
Troubleshooting	32
Contact	37

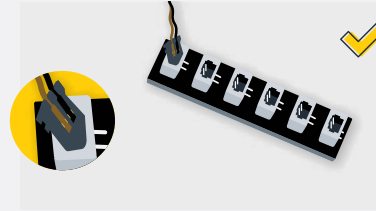
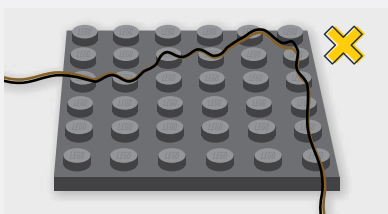
Before You Begin



Laying cables in between and underneath bricks

Cables can fit in between and underneath LEGO® bricks, plates, and tiles providing they are laid correctly between the LEGO® studs. Do NOT forcefully join LEGO® together around cables; instead ensure they are laying comfortably in between each stud.

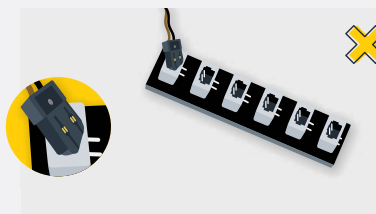
CAUTION: Forcing LEGO® to connect over a cable can result in damaging the cable and light.



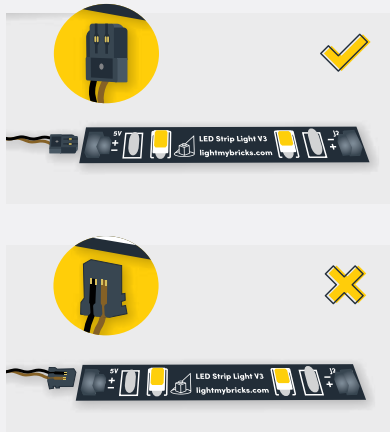
Connecting Cable Connectors To Expansion Boards

Take extra care when inserting connectors to ports of Expansion Boards. Connectors can be inserted only one way. With the expansion board facing up, look for the soldered “=” symbol on the left side of the port. The connector side with the wires exposed should be facing toward the soldered “=” symbol as you insert into the port. If a plug won’t fit easily into a port connector, do not force it.

Incorrectly inserting the connector can result in bent pins inside the port or possible overheating of the expansion board when connected.

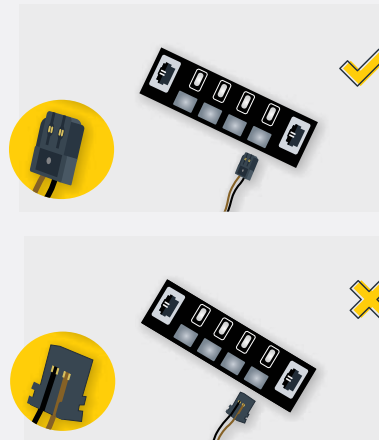


Before You Begin



Connecting Cable Connectors To Strip Lights

Take extra care when inserting connectors to ports on the Strip Lights. Connectors can be inserted only one way. With the Strip Light facing up, ensure the side of the connector with the wires exposed is facing down. If a plug won't fit easily into a port connector, don't force it. Doing so will damage the plug and the connector.



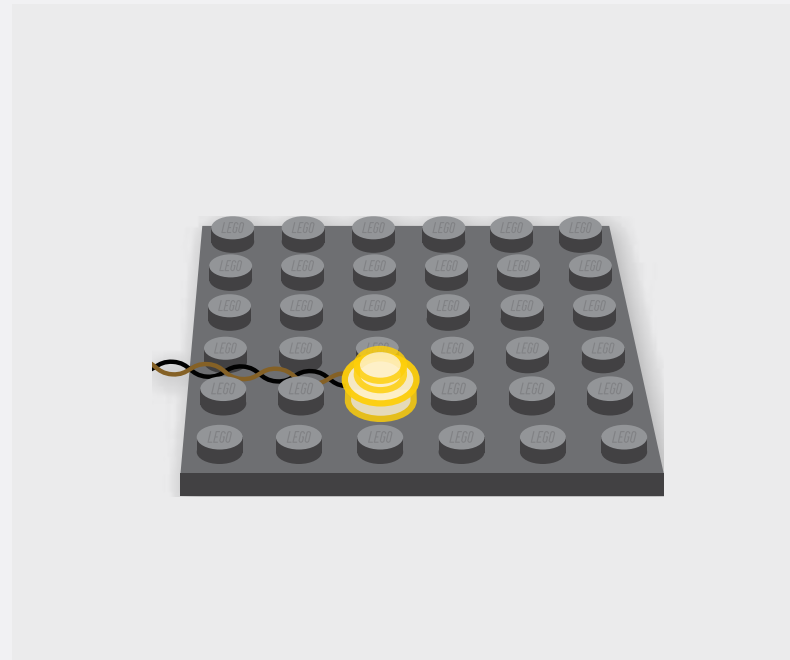
Connecting Micro Cable Connectors To Micro Expansion Board Ports

Take extra care when inserting the micro connectors to micro ports of Micro Expansion Boards. Connecting Micro Bit Lights to Micro Expansion Boards is similar to connecting lights and cables to Strip Lights. With the expansion board facing up, ensure the side of the connector with the wires exposed is facing down. If a plug won't fit easily into a port connector, do not force it. Use your fingernail to push the plastic part of the connector to the micro port.

Before You Begin

Installing Bit Lights Under Lego® Bricks And Plates

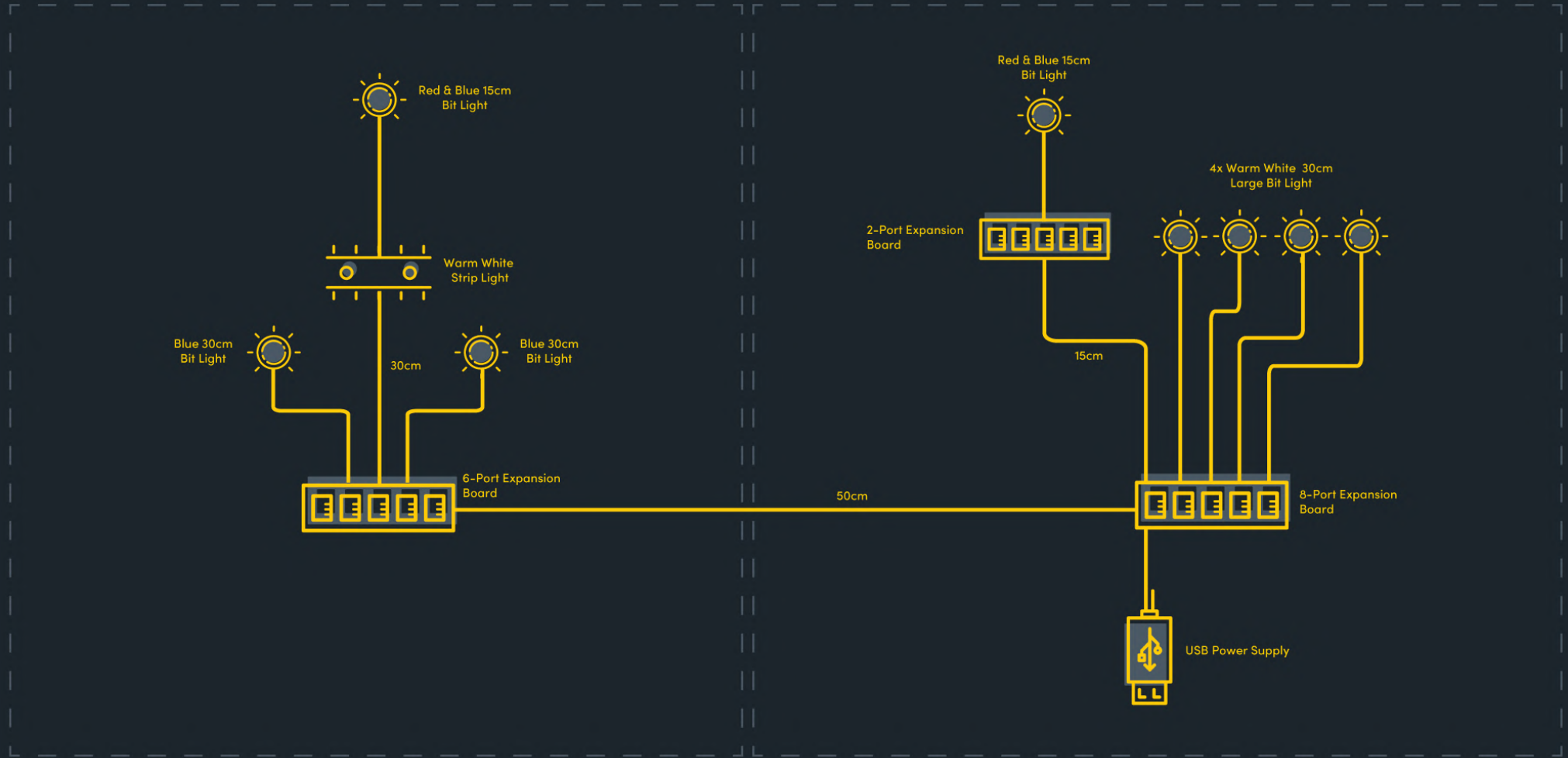
When installing Bit Lights under LEGO® pieces, ensure they are placed the correct way up (Yellow LED component exposed). You can either place them directly on top of LEGO® studs or in between.



BLUEPRINT

Tallneck

Base





INSTRUCTIONS

To ensure a smooth installation of your light kit, please read and follow each step carefully. If you run into any issues, please refer to the online troubleshooting guide.



LEGEND:  DISCONNECT

 CONNECT / RECONNECT



TURN / FLIP



DIRECTIONAL



TWIST / BRAID



POWER ON / TEST



LEGENDE:  TRENNEN

 VERNINDEN / WIEDERVERBINDEN



WENDEN / KIPPEN



DIRECTIONAL



DREHEN / VERDREHEN



EINSCHALTEN / TESTEN



LÉGENDE:  DÉCONNECTER

 CONNECTER / RECONNECTER



TOUR / INCLINAISON



DIRECTIONNEL



TORSION / TRESSER



POWER ON / TEST



LEGGENDA:  SCOLLEGARE

 CONNETTI / RICONNETTI



ROTARE / INCLINARE



DIREZIONALE

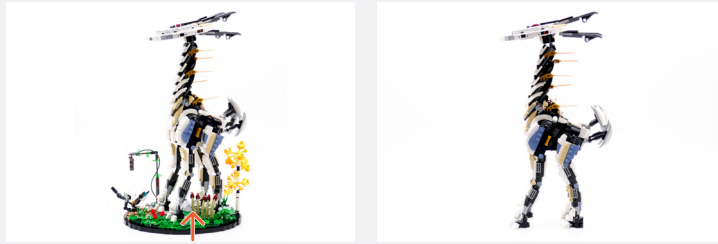


TWIST / TRECCIA



POWER ON / TEST

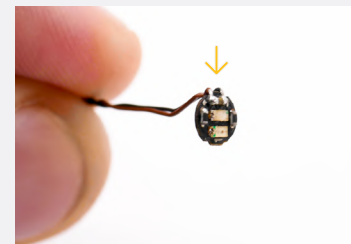
1



2



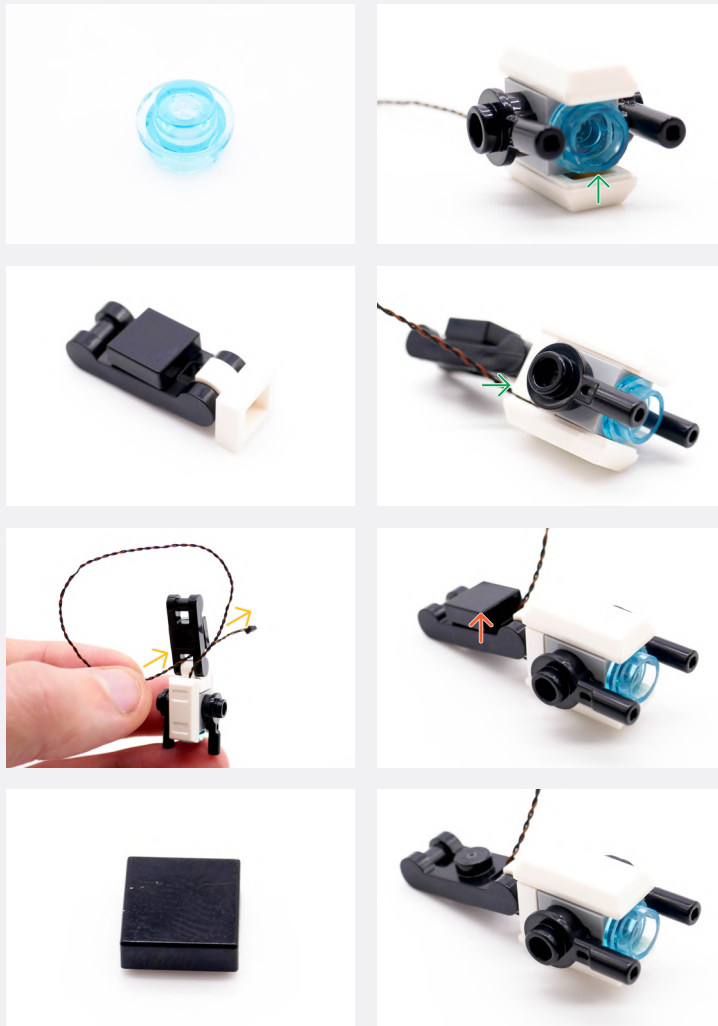
3



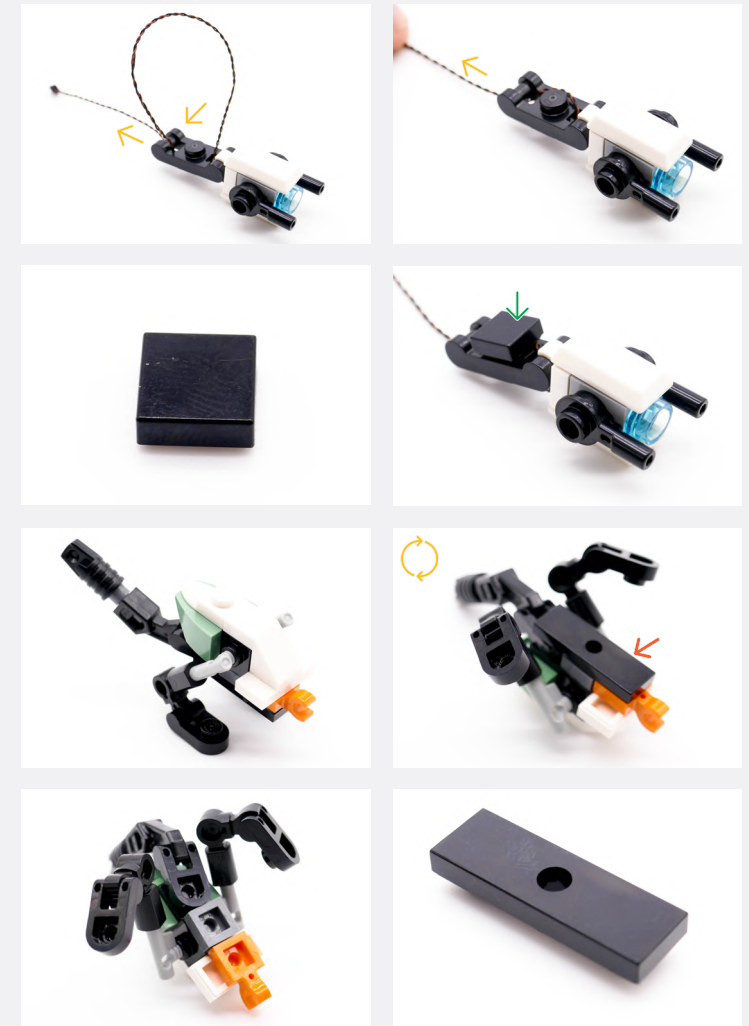
Legend



4

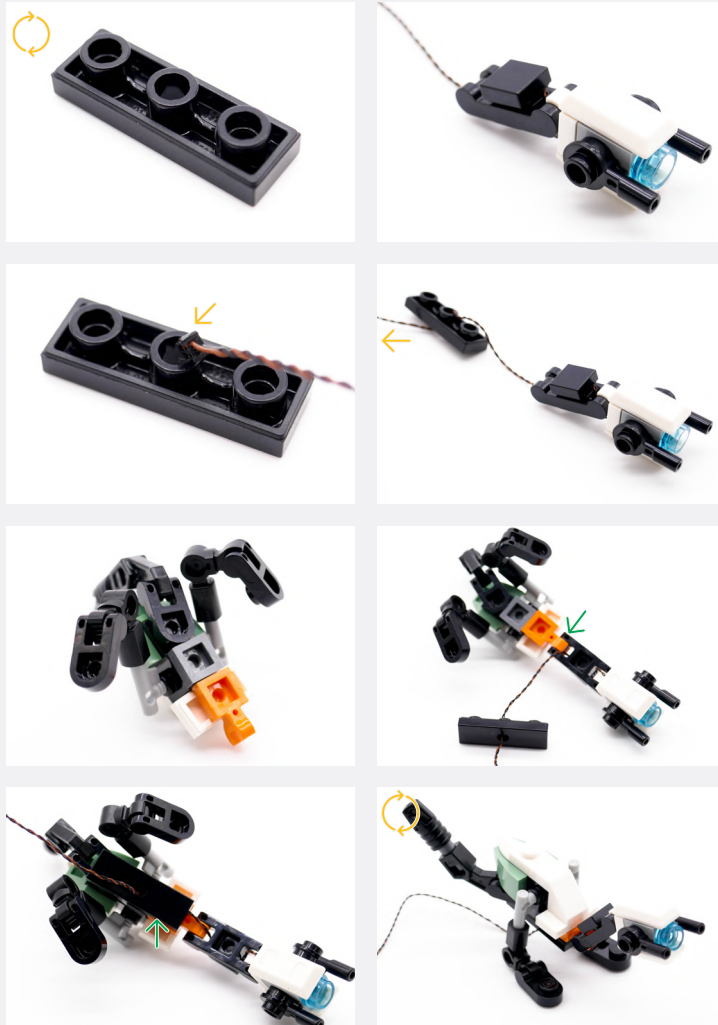


5

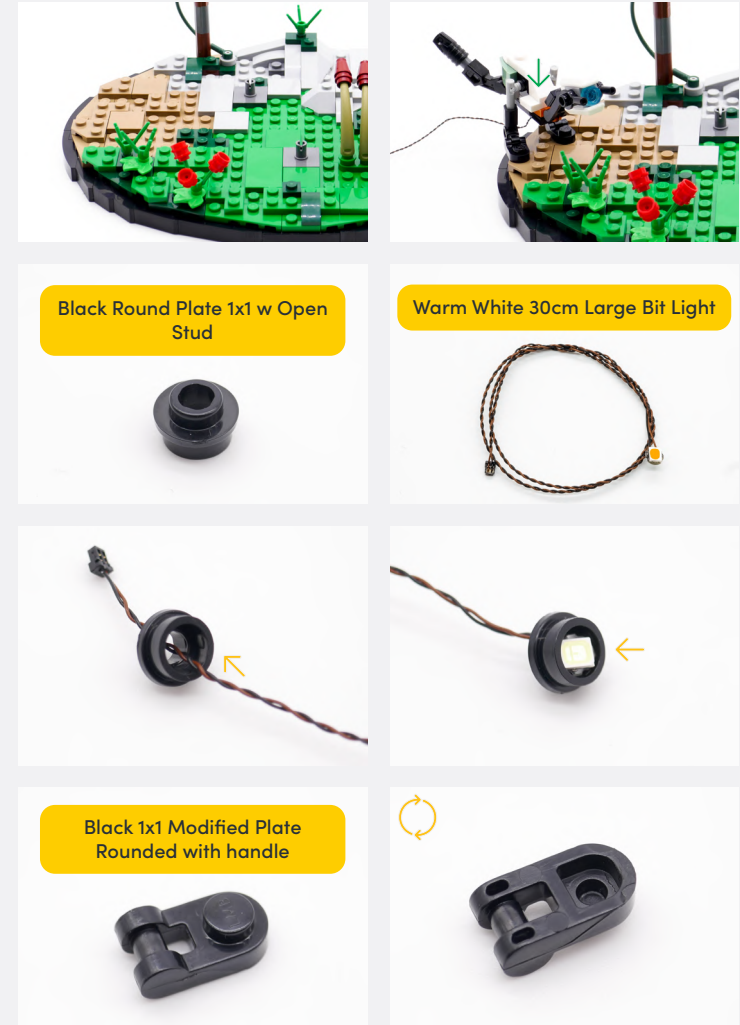


Legend

- DISCONNECT
- CONNECT / RECONNECT
- TURN / FLIP
- DIRECTIONAL
- TWIST / BRAID
- POWER ON TEST
- NOTE ICON



6

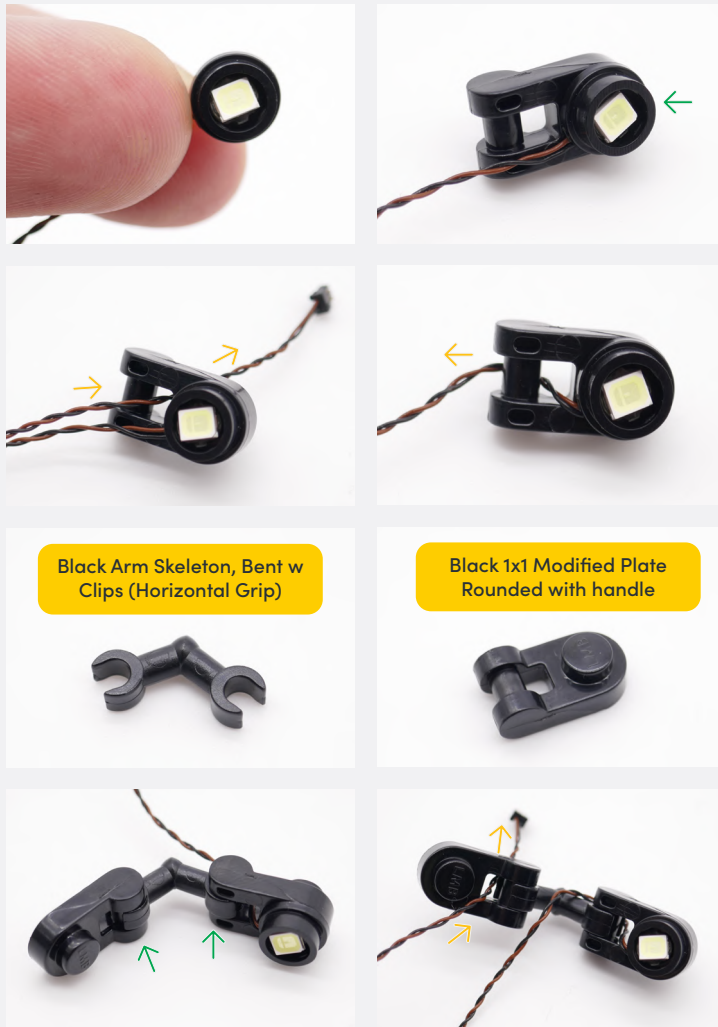


Black Round Plate 1x1 w Open Stud

Warm White 30cm Large Bit Light

Black 1x1 Modified Plate Rounded with handle

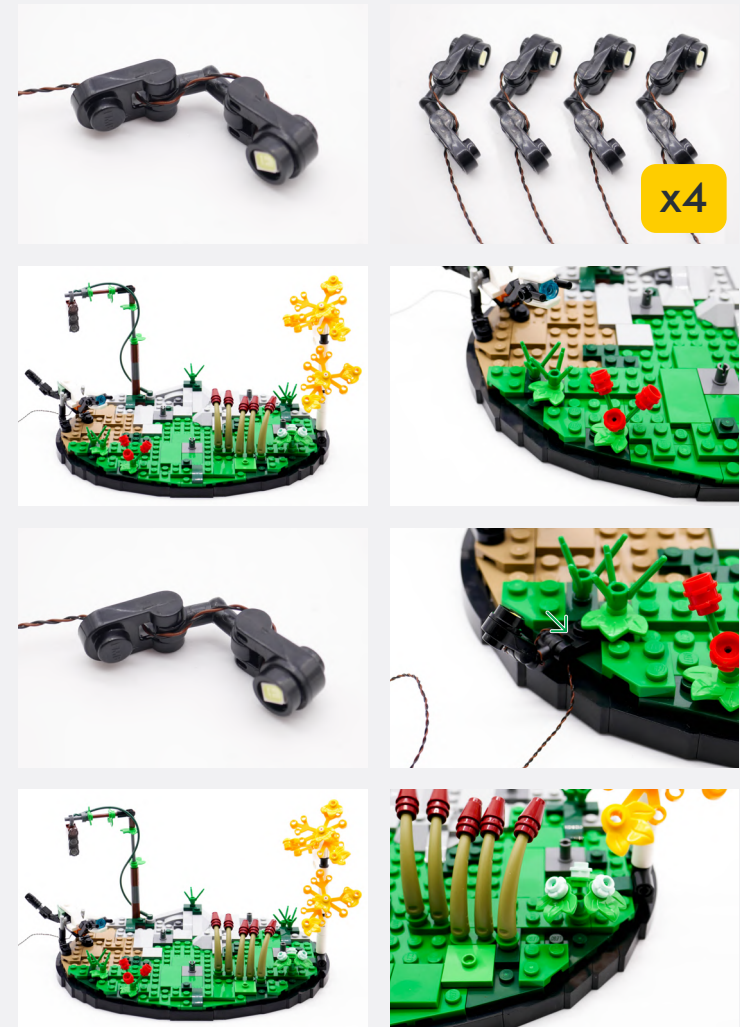
Legend → DISCONNECT → CONNECT / RECONNECT ↻ TURN / FLIP → DIRECTIONAL ↻ TWIST / BRAID ✨ POWER ON TEST 📝 NOTE ICON



Black Arm Skeleton, Bent w Clips (Horizontal Grip)

Black 1x1 Modified Plate Rounded with handle

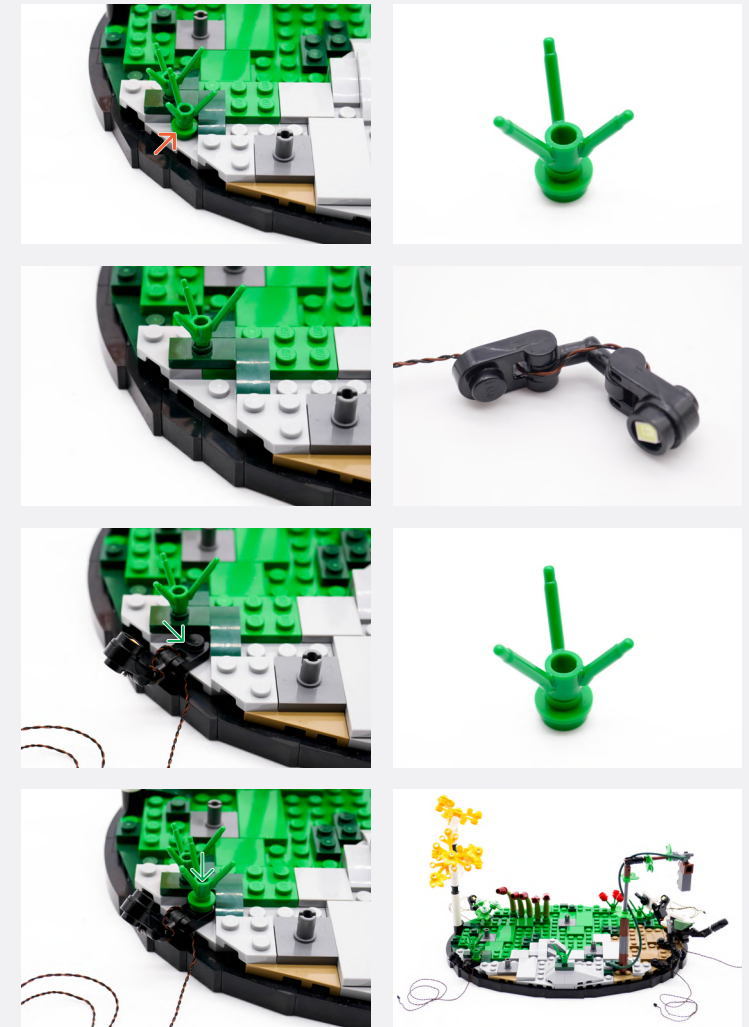
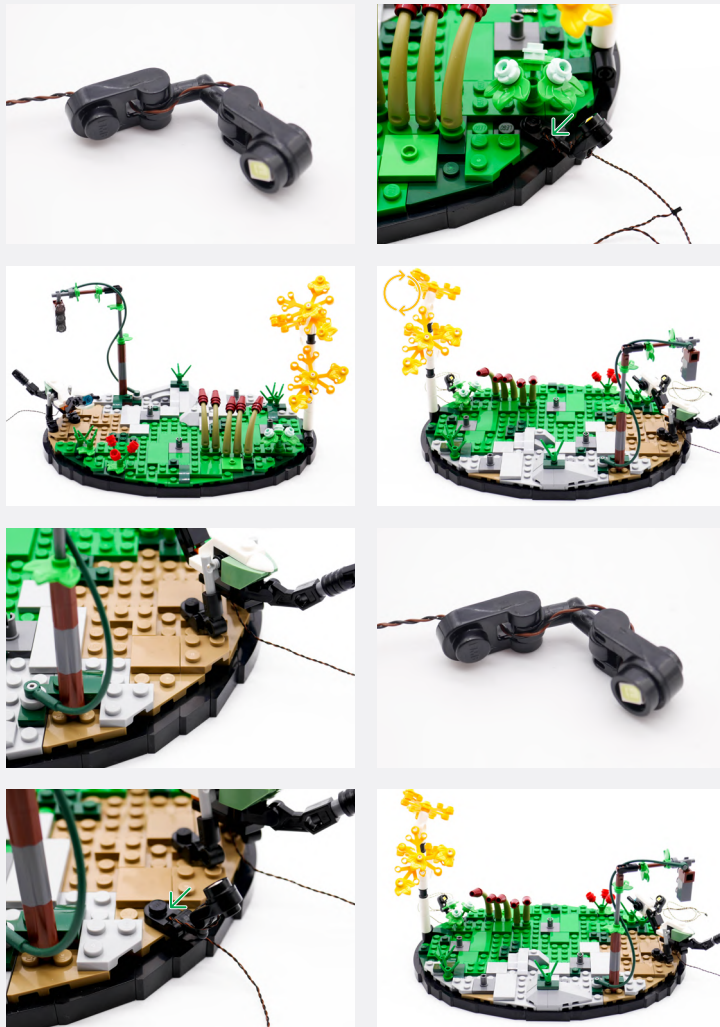
6



x4

Legend → DISCONNECT → CONNECT / RECONNECT ↻ TURN / FLIP → DIRECTIONAL ↻ TWIST / BRAID * POWER ON TEST 📝 NOTE ICON

7



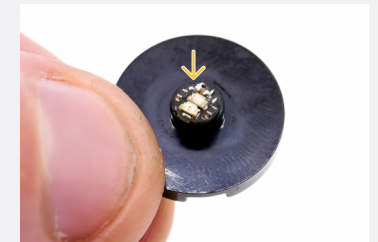
Legend

- DISCONNECT
- CONNECT / RECONNECT
- TURN / FLIP
- DIRECTIONAL
- TWIST / BRAID
- POWER ON TEST
- NOTE ICON

8



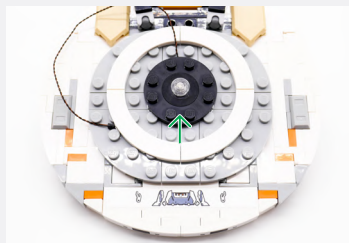
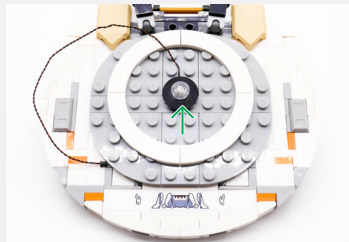
9



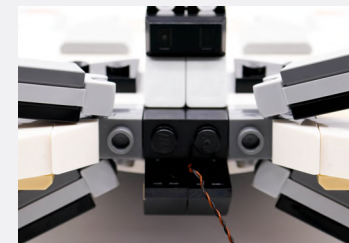
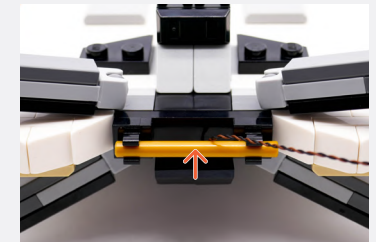
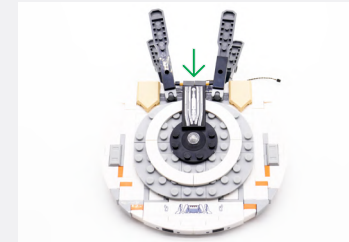
Legend



Round Plate 1x1 - Trans Clear



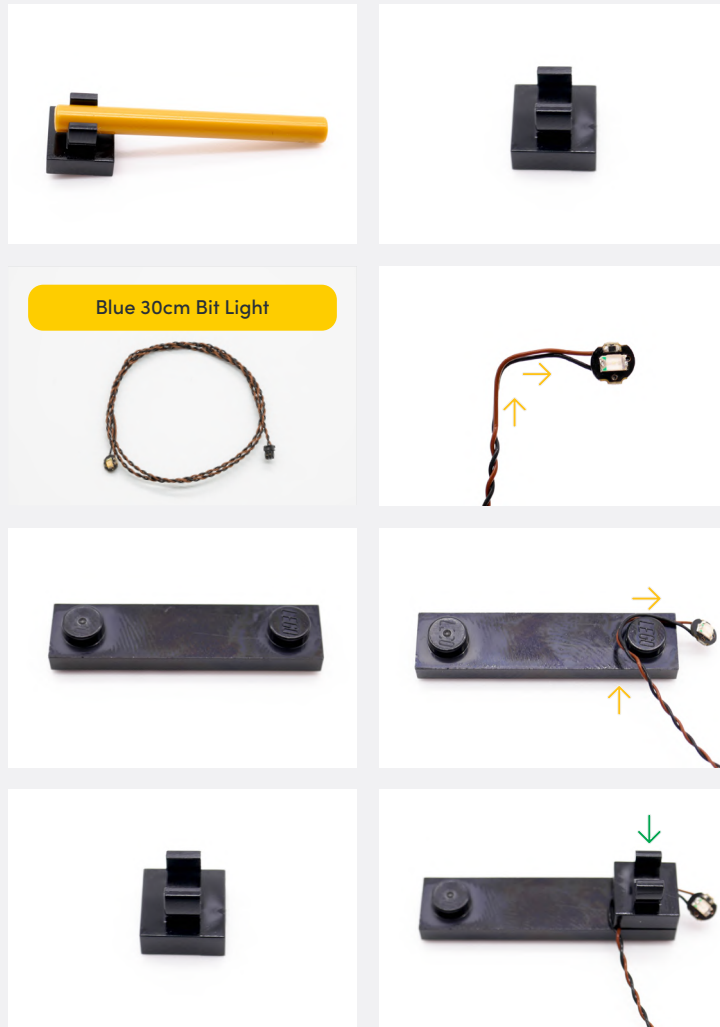
10



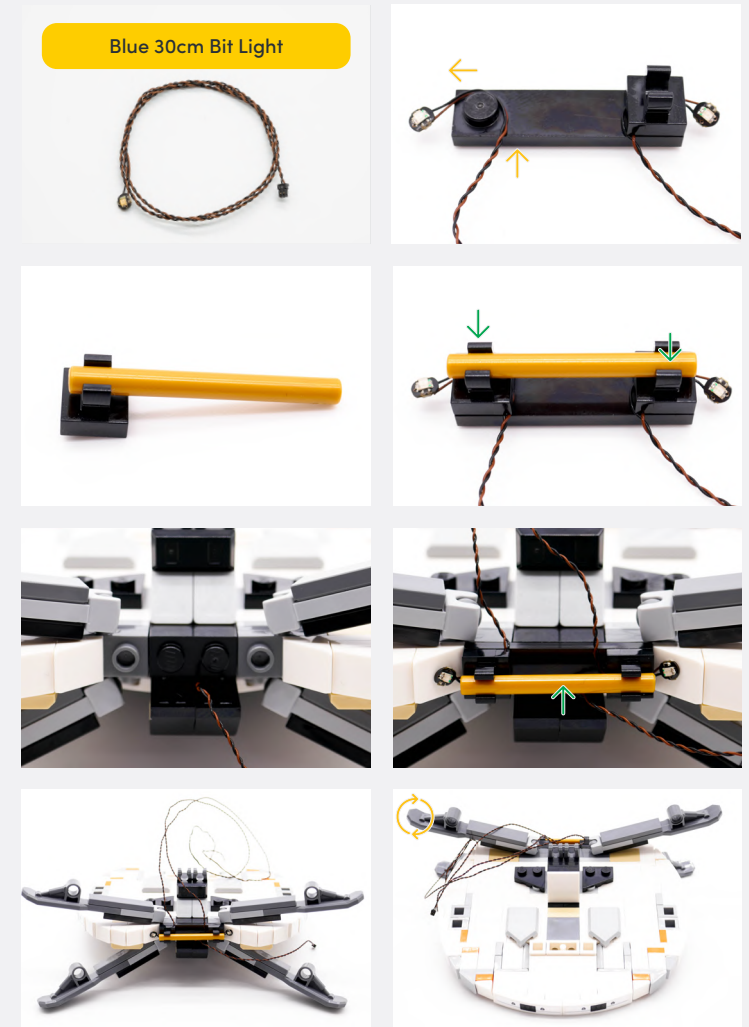
Legend



11



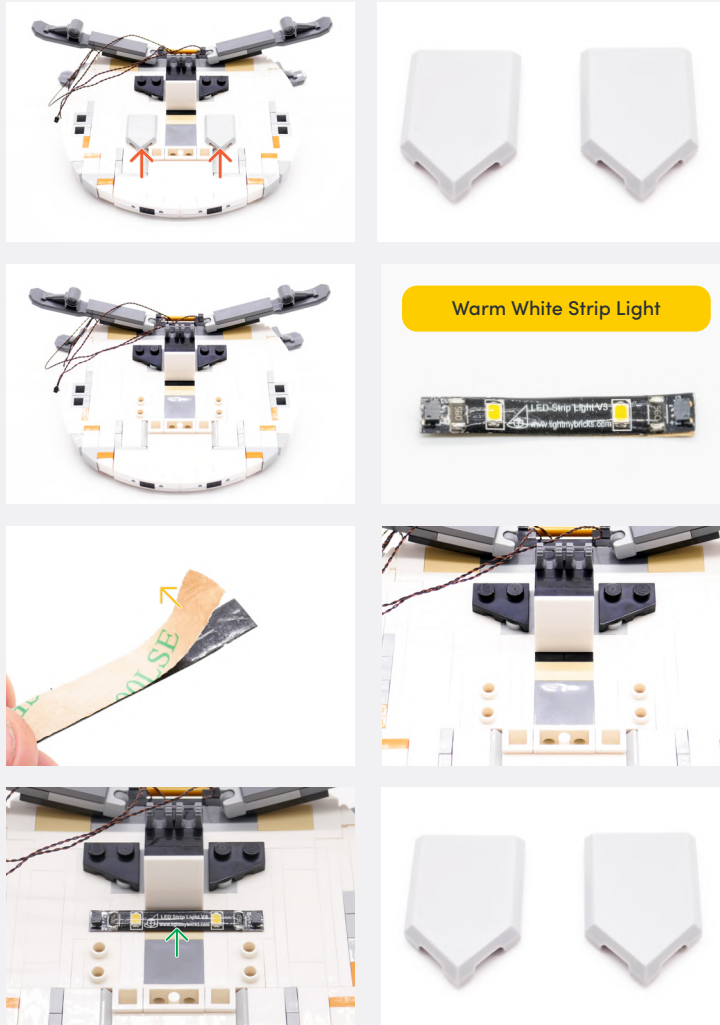
12



Legend

- DISCONNECT
- CONNECT / RECONNECT
- ↻ TURN / FLIP
- DIRECTIONAL
- ↔ TWIST / BRAID
- ✳ POWER ON TEST
- 📝 NOTE ICON

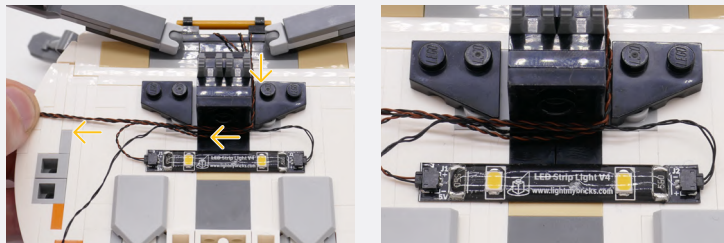
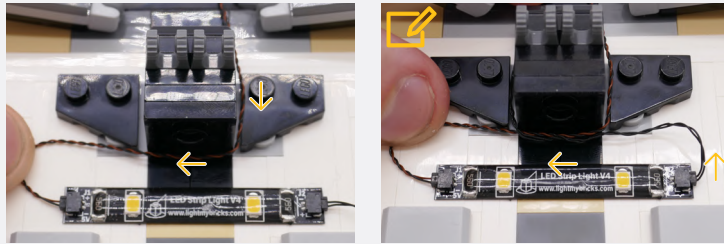
13



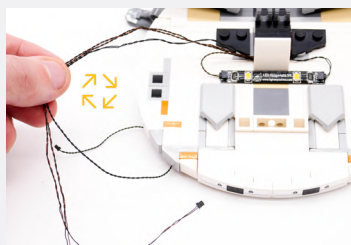
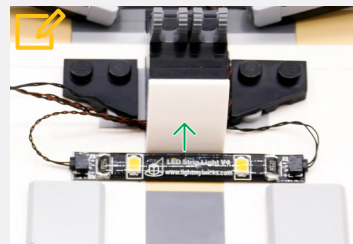
Grab the shortest cable and plug it into the Strip Light

Legend DISCONNECT CONNECT / RECONNECT TURN / FLIP DIRECTIONAL TWIST / BRAID POWER ON TEST NOTE ICON

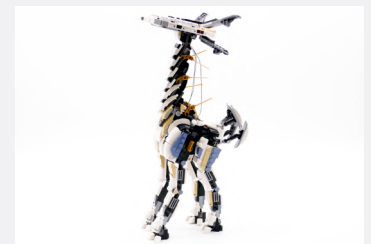
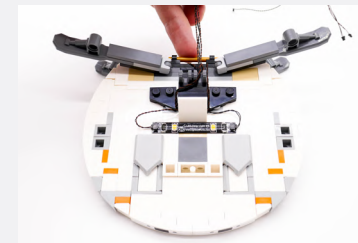
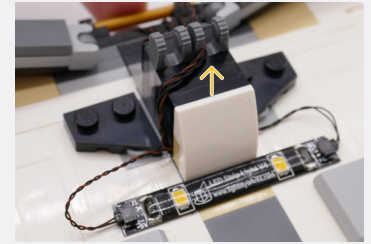
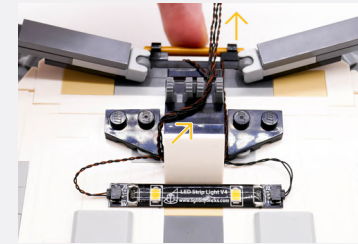
Grab the 30cm Connecting Cable and pull to the side



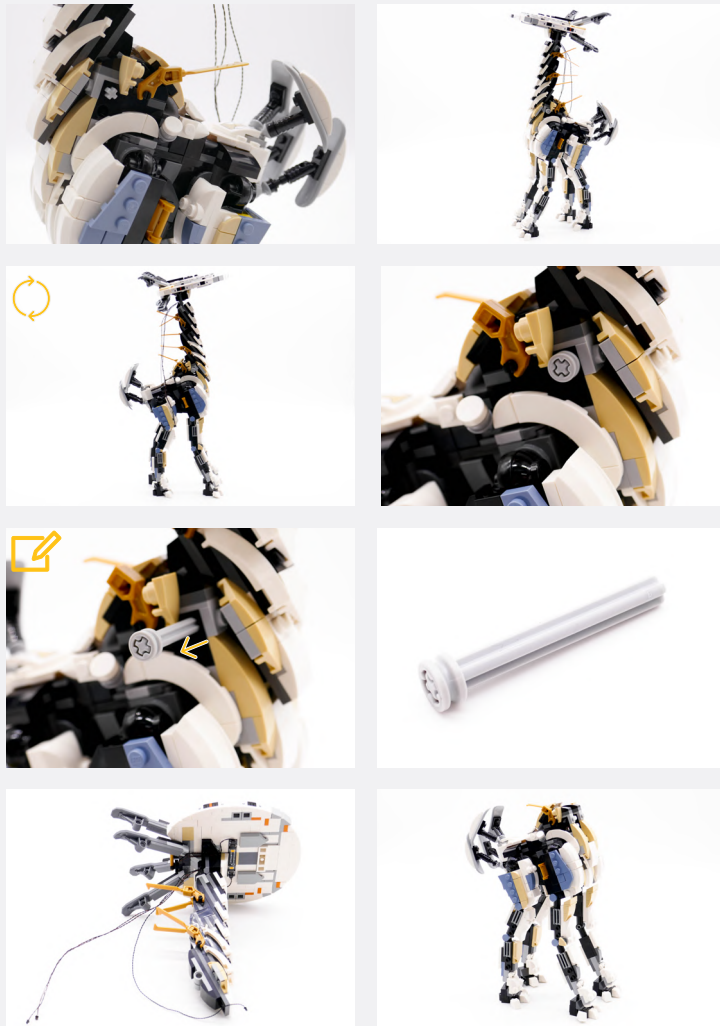
Put all the cables under the LEGO piece and connect



14

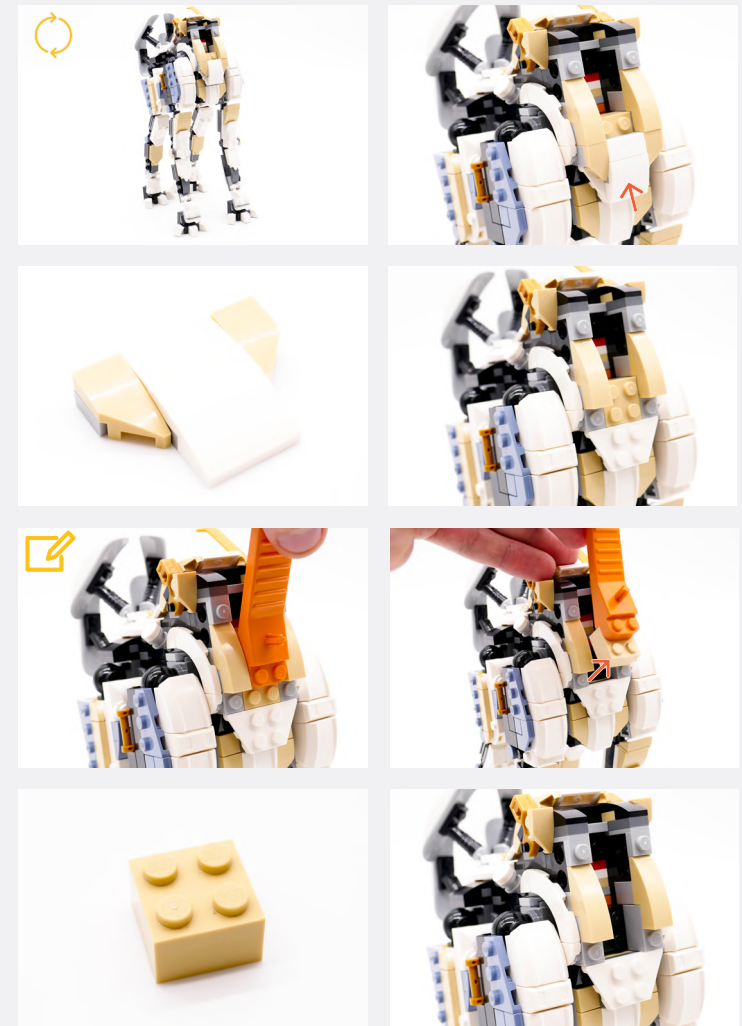


Legend → DISCONNECT → CONNECT / RECONNECT ↻ TURN / FLIP → DIRECTIONAL ↻ TWIST / BRAID * POWER ON TEST 📝 NOTE ICON



Make sure to hold the head section when removing this piece as the neck will not be connected

15



Use the LEGO Brick Separator or similar to remove this brick

Legend DISCONNECT CONNECT / RECONNECT TURN / FLIP DIRECTIONAL TWIST / BRAID POWER ON TEST NOTE ICON

16

<p>2x1 Brick - Black</p>	
	<p>6-Port Expansion Board</p>

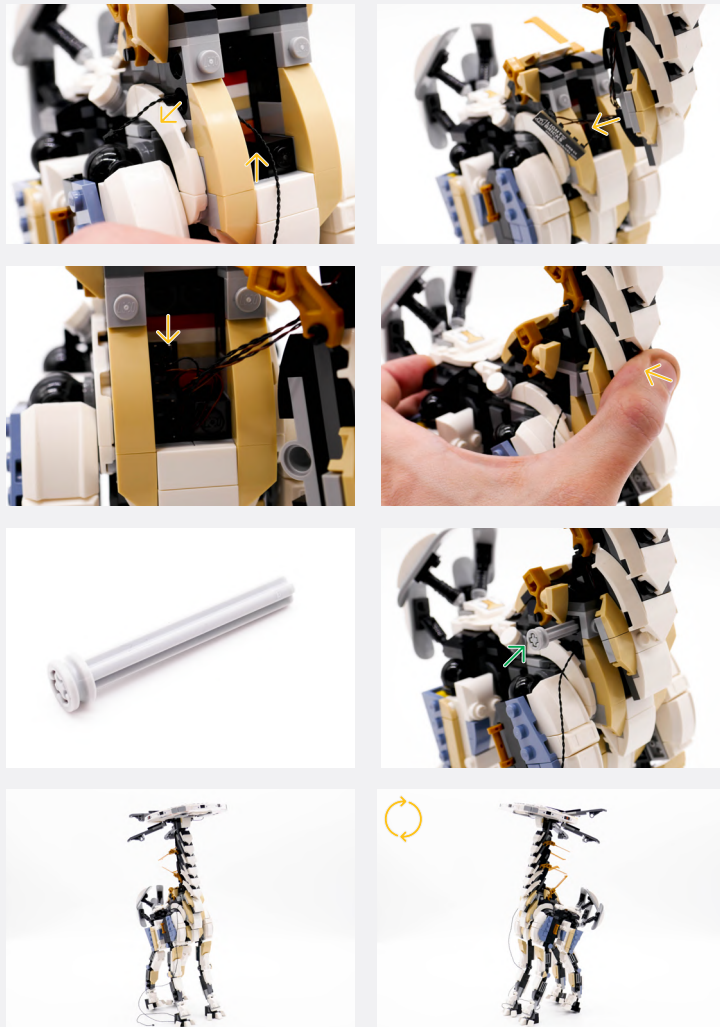
Tuck the cables between the gold clips and neck

17

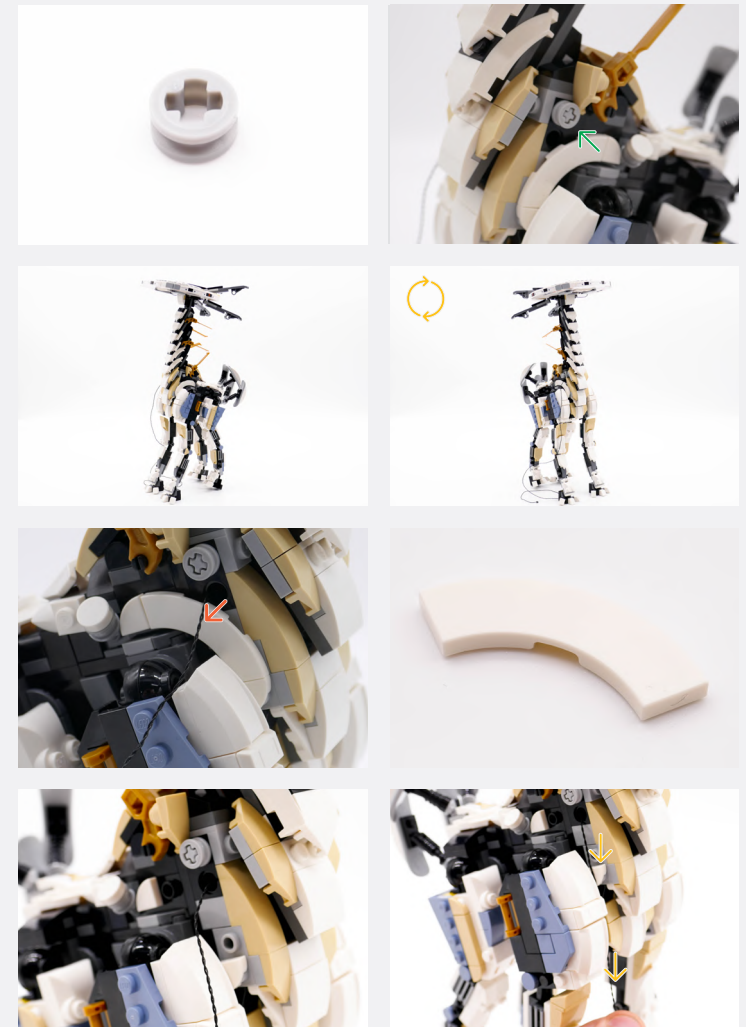
	<p>50cm Connecting Cable</p>

Legend

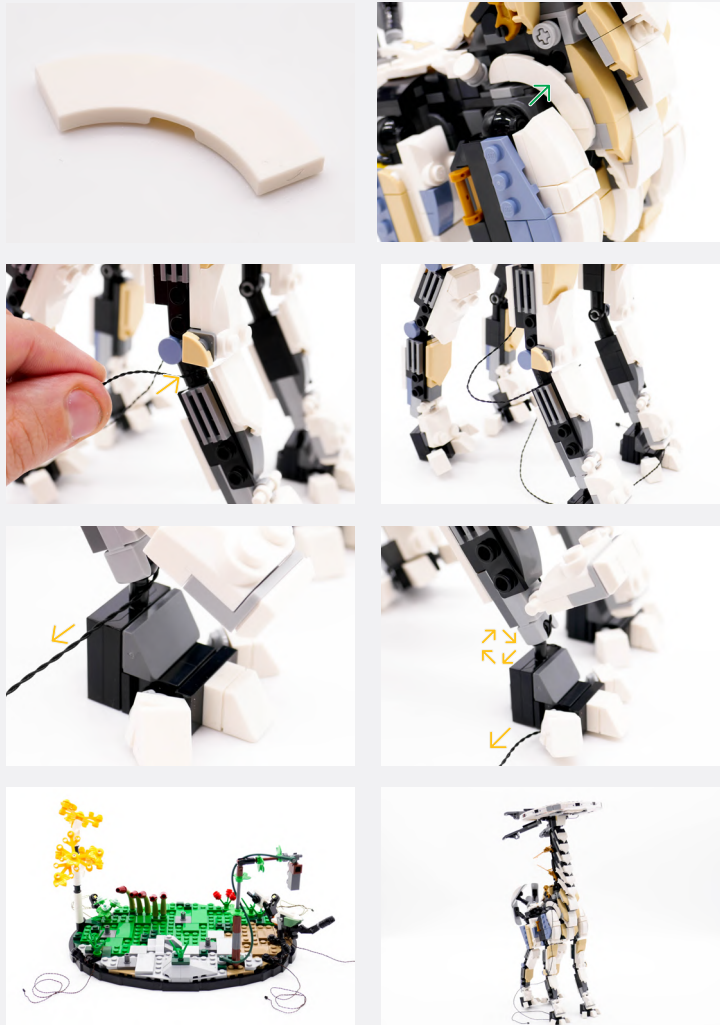
DISCONNECT	CONNECT / RECONNECT	TURN / FLIP	DIRECTIONAL	TWIST / BRAID	POWER ON TEST	NOTE ICON
------------	---------------------	-------------	-------------	---------------	---------------	-----------



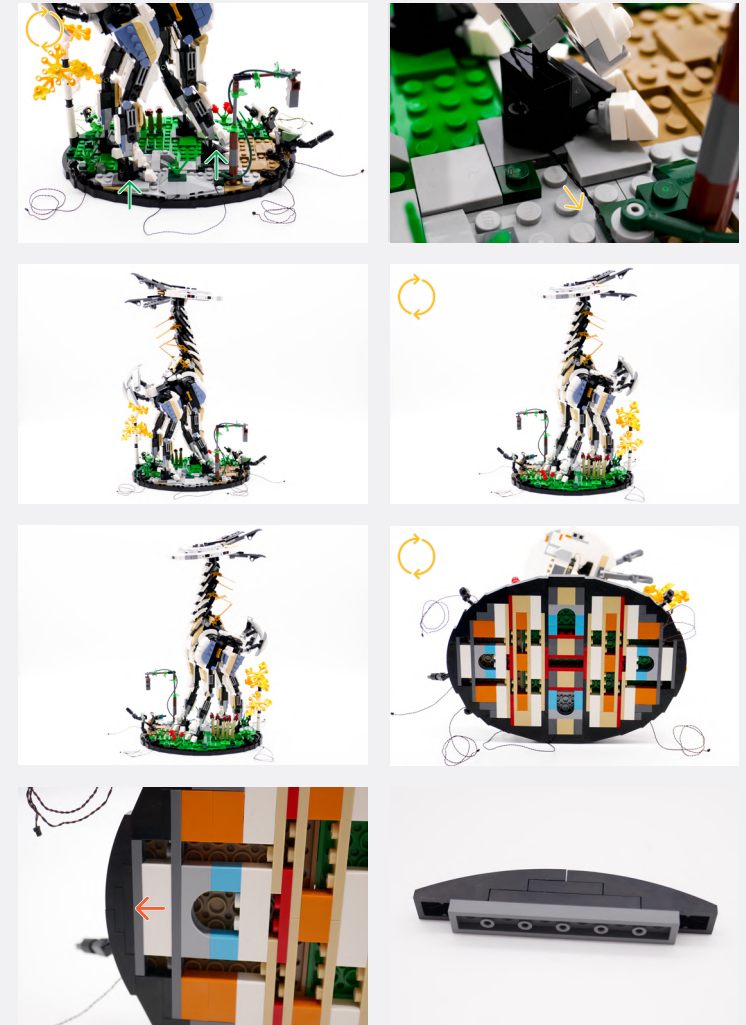
18



Legend → DISCONNECT → CONNECT / RECONNECT ↻ TURN / FLIP → DIRECTIONAL ↻ TWIST / BRAID * POWER ON TEST 📄 NOTE ICON



19



Legend → DISCONNECT → CONNECT / RECONNECT ↻ TURN / FLIP → DIRECTIONAL ↻ TWIST / BRAID ✨ POWER ON TEST 📝 NOTE ICON

20

1x1 Bracket - Light Grey	1x1 Round Tile - Trans Clear

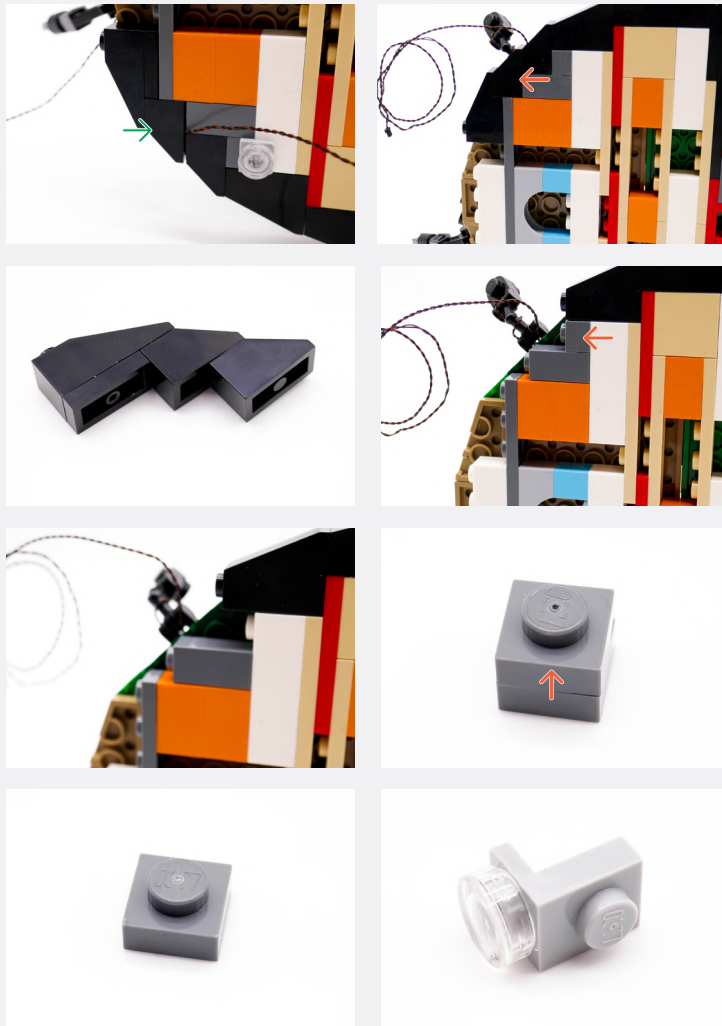
21

	x4

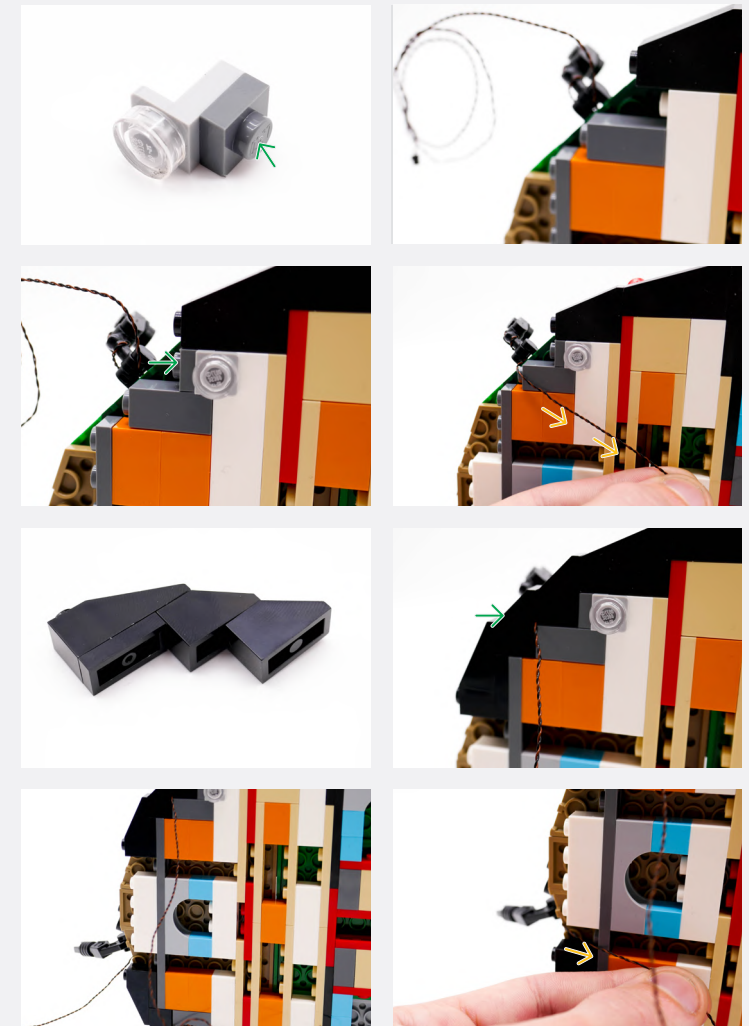
Legend

- DISCONNECT
- CONNECT / RECONNECT
- TURN / FLIP
- DIRECTIONAL
- TWIST / BRAID
- POWER ON TEST
- NOTE ICON

22



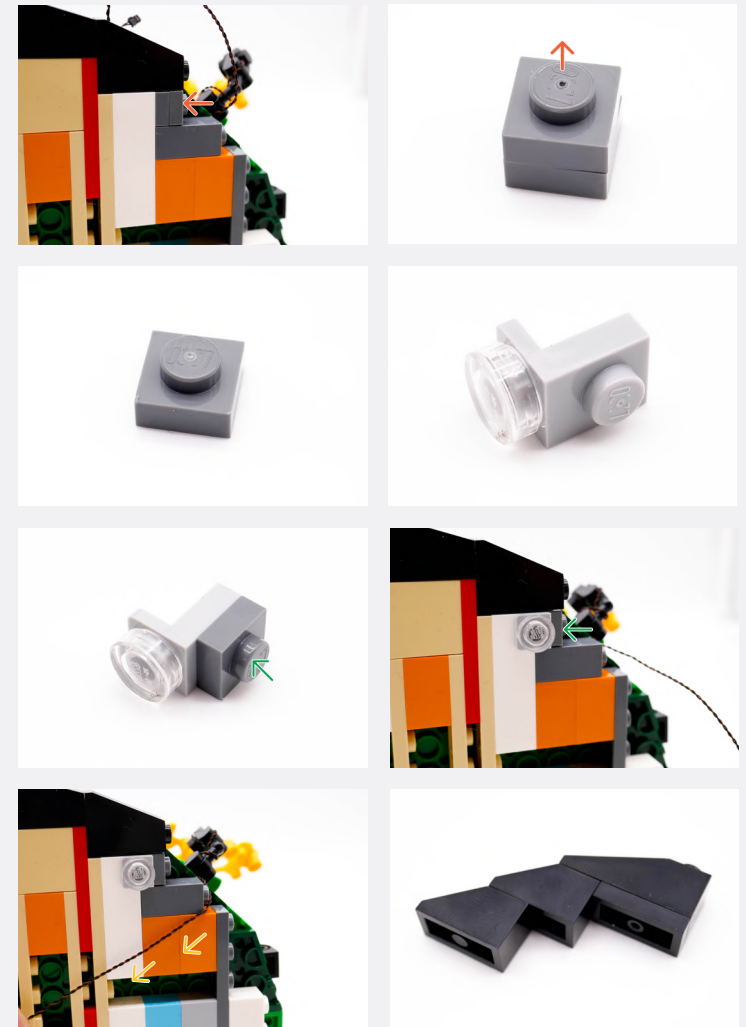
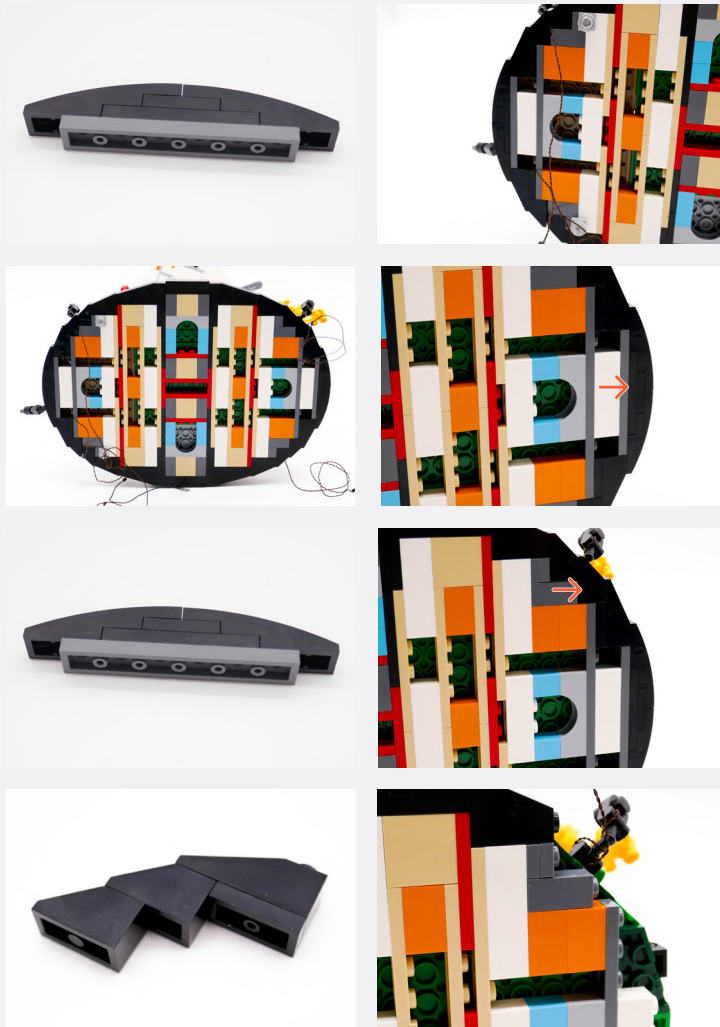
23



Legend

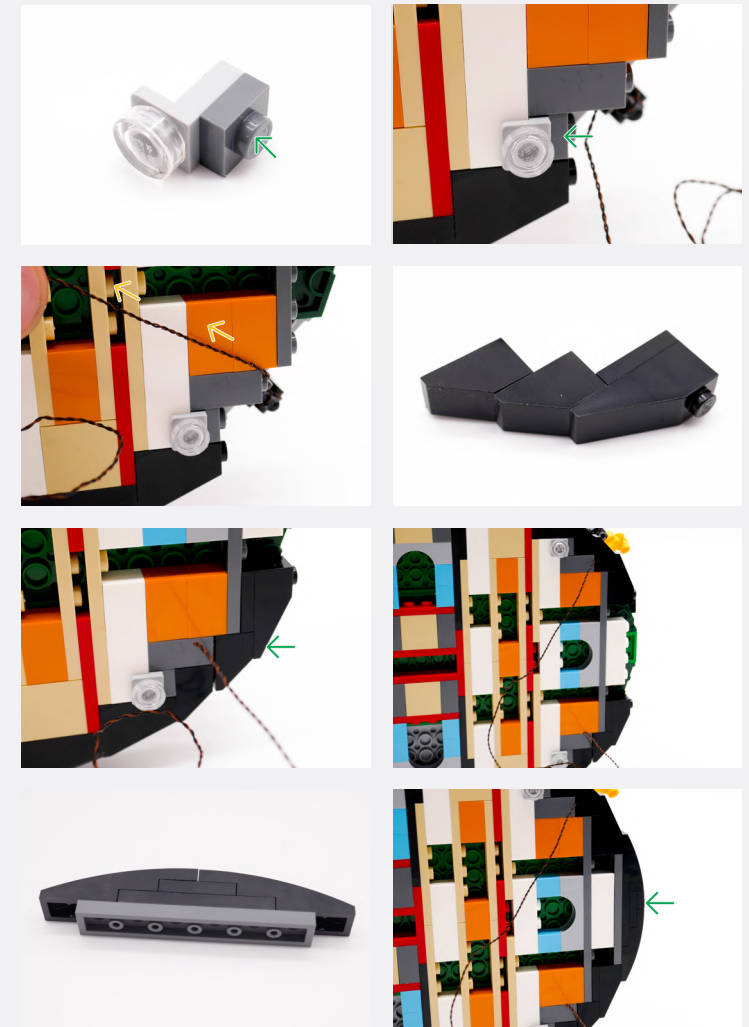
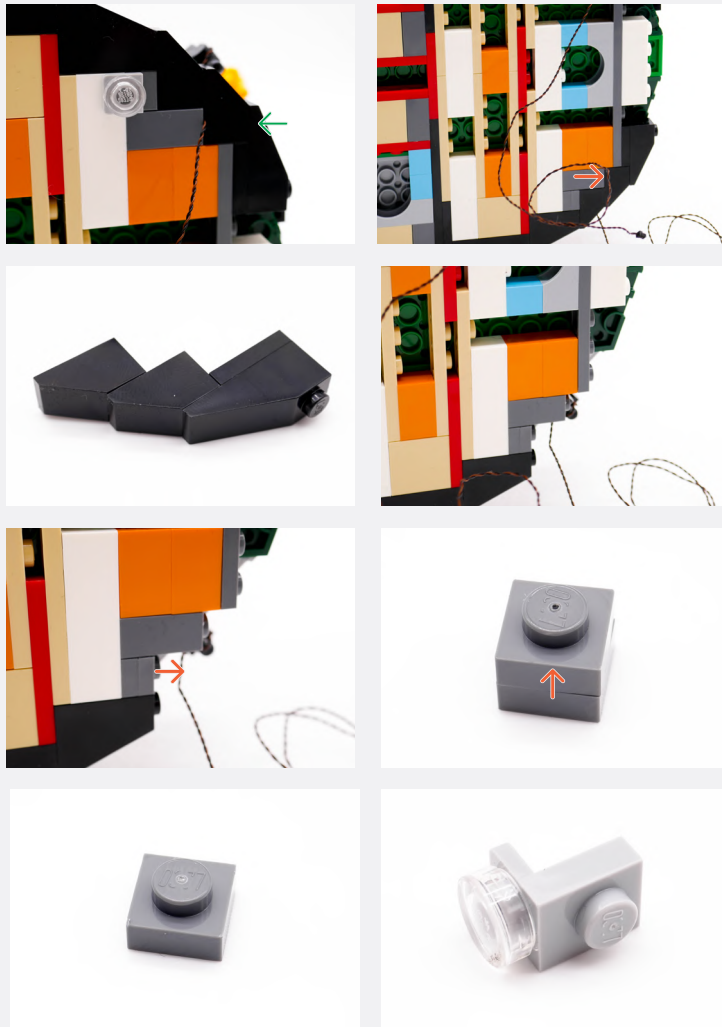
- DISCONNECT
- CONNECT / RECONNECT
- ↻ TURN / FLIP
- DIRECTIONAL
- ↻↻ TWIST / BRAID
- ✳ POWER ON TEST
- 📝 NOTE ICON

24



Legend → DISCONNECT → CONNECT / RECONNECT ↻ TURN / FLIP → DIRECTIONAL ↔ TWIST / BRAID ✨ POWER ON TEST 📝 NOTE ICON

25

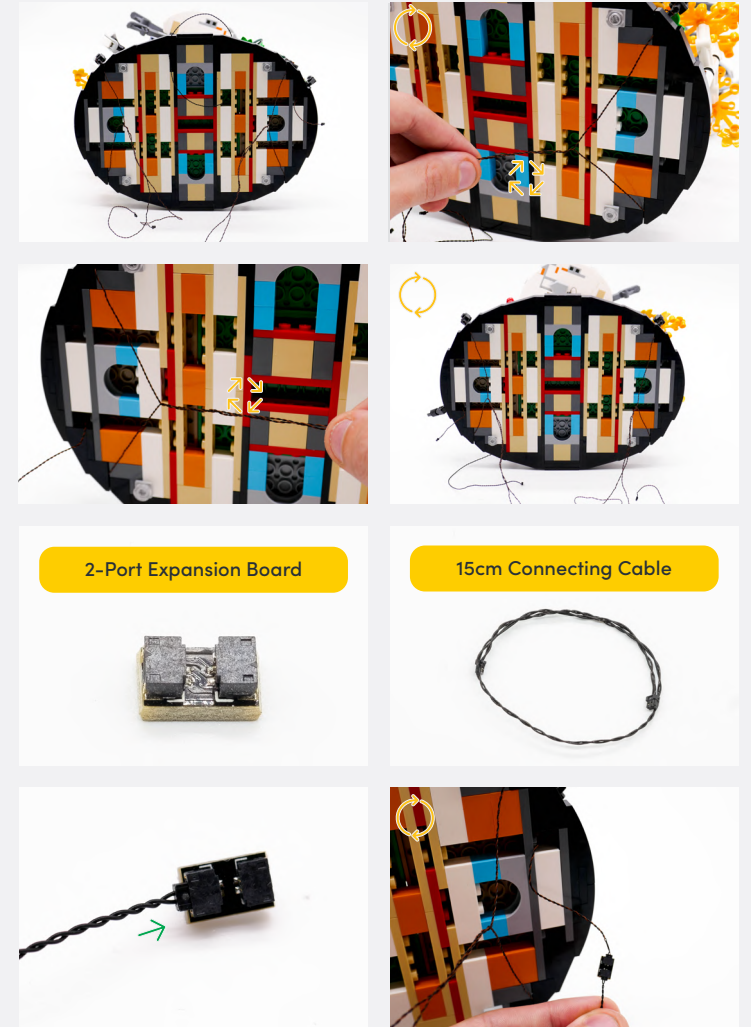


Legend → DISCONNECT → CONNECT / RECONNECT ↻ TURN / FLIP → DIRECTIONAL ↻ TWIST / BRAID * POWER ON TEST 📝 NOTE ICON

26



27



2-Port Expansion Board

15cm Connecting Cable

Legend

- DISCONNECT
- CONNECT / RECONNECT
- TURN / FLIP
- DIRECTIONAL
- TWIST / BRAID
- POWER ON TEST
- NOTE ICON

1x Adhesive Squares

8-Port Expansion Board

2x Adhesive Squares

USB Power Cable

Peel masking off of Adhesive Squares

Peel masking off of Adhesive Squares

29

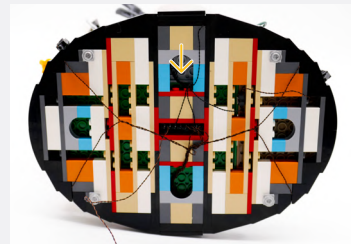
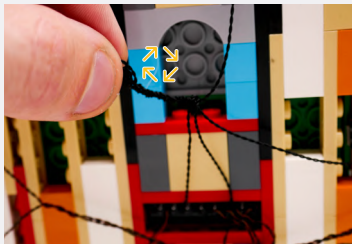
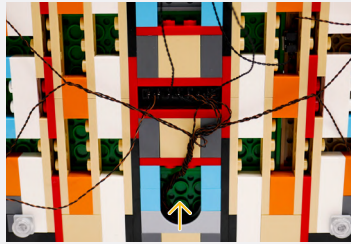
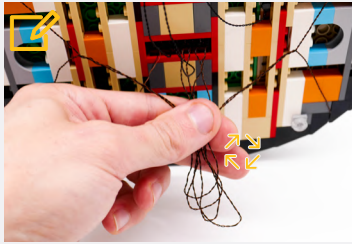
Legend

- DISCONNECT
- CONNECT / RECONNECT
- ↻ TURN / FLIP
- DIRECTIONAL
- ↔ TWIST / BRAID
- ⚡ POWER ON TEST
- 📝 NOTE ICON

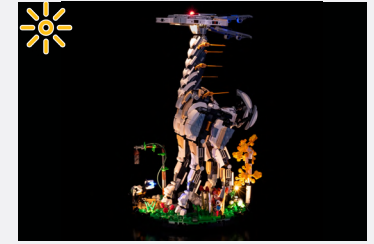
If you experience any issues with the lights not working and suspect an issue with a component, please try a different port on the expansion board to verify where the fault lies (with the light or expansion board). To correct any issues with expansion board ports, please view the section addressing expansion board issues in our troubleshooting section.

30

Exclude the USB Power Cable from twisting



Connect the other end to a 5V USB Power Bank, 5V USB Wall Adaptor, or USB to AA Battery Pack (sold separately)



You should have these parts left over that were removed from the LEGO set

Removed Parts

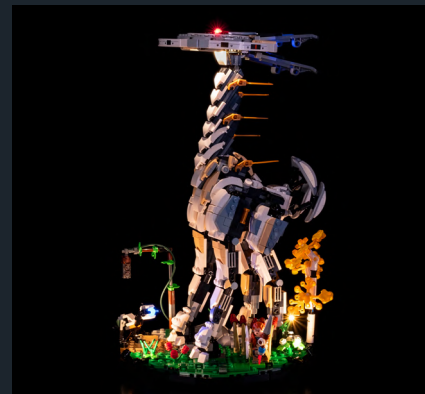


Legend

- DISCONNECT
- CONNECT / RECONNECT
- TURN / FLIP
- DIRECTIONAL
- TWIST / BRAID
- POWER ON TEST
- NOTE ICON

FINAL PRODUCT

This finally completes installation of the Light My Bricks
LEGO The Globe 21332 Light Kit.





TROUBLESHOOTING

Light My Bricks lighting kits contain individual components that are very small and can be easily damaged if not handled correctly.

To prevent unnecessary damage to components, we highly recommend that the User Guide section, **“Important things to note”** is read carefully. Follow the handling procedures in the User Guide to help prevent faults and damages to your Light My Bricks components.

If you are experiencing issues with your Light My Bricks set, watch our troubleshooting video or read on for a list of common causes to help you troubleshoot.

Troubleshooting

Firstly, ensure that the batteries have power using a battery charge gauge.

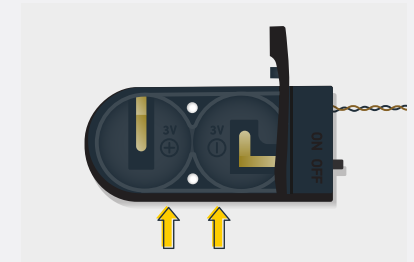
If the batteries have no power, replace the batteries.

If the batteries still have power, check to see if the batteries have been inserted correctly into the battery pack.

Check For CR2032 Batteries Using The Flat Battery Pack

Inside the battery pack is a symbol indicating which side the (round) CR2032 battery should be inserted. Check that the “+” side of the battery pack has the battery with the “+” symbol facing downwards.

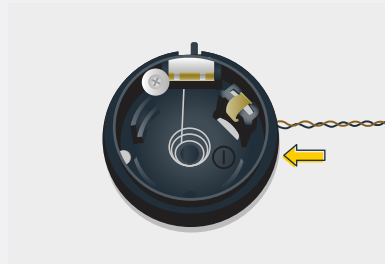
On the opposite side, the “-” side of the battery pack should have the battery flipped upside down, that is the “+” symbol facing upwards.



Troubleshooting

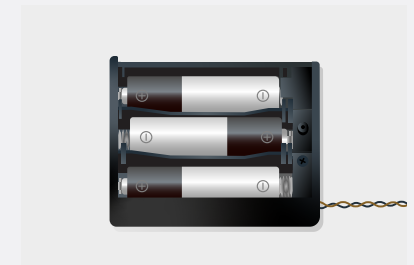
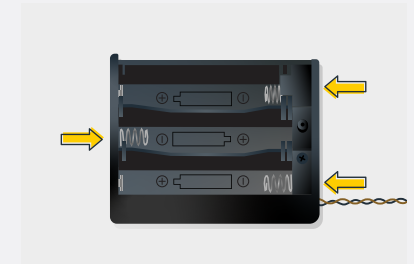
Check For Cr2032 Batteries Using The Round Battery Pack

Inside the battery pack is a symbol indicating which side the (round) CR2032 battery should be inserted. In this case, for the stacked battery pack, ensure that BOTH batteries have the “+” symbol facing upwards.



Check for AA batteries using the AA battery pack

Inside the battery pack are symbols indicating which direction the AA battery should be inserted. The flat side of the battery should be paired with the spring side of the battery pack.



If the batteries have been installed correctly and your kit still isn't operating correctly, the next step is to check the wiring.

Troubleshooting

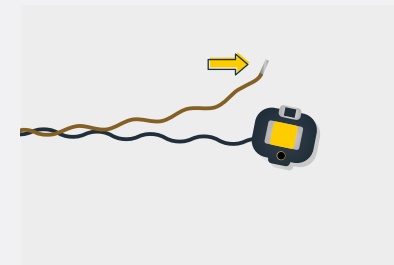
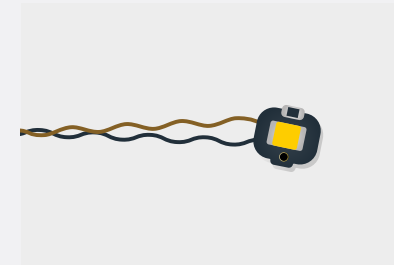
Check Your Wires

In order for Light My Bricks components to fit in between and underneath LEGO® bricks, the components need to be very small. Due to this nature, Light My Bricks components can be easily damaged when not handled correctly.

Be careful when removing unpacked components out of the packaging and ensure not to forcibly pull at the wires as this can damage the soldering that attach the wires to the LEDs.

If the wiring is detached from the LED itself, the light will not operate.

When connecting lights to your LEGO set, check that there are no pinched wires underneath or in between bricks and plates. When the wires are pinched and the exposed wires are touching each other, this can cause a crosswire and the lights to not function correctly.



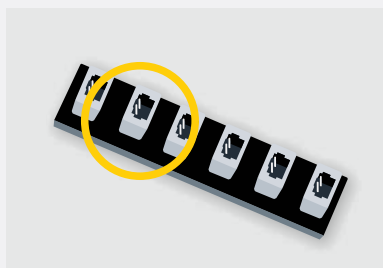
Troubleshooting

Check Your Expansion Board Ports/ Strip Light Ports / Effects Board Ports

It is important to note that connectors can only be inserted to the expansion board, strip light, or effects board ports in one direction.

Forcibly inserting connectors in the incorrect direction will result in damaging the pins inside each of the ports on your component board.

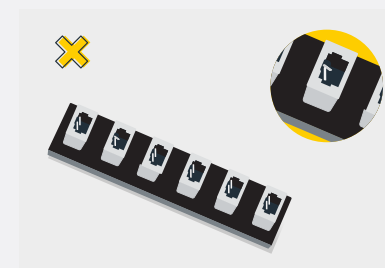
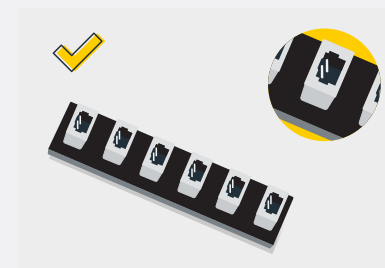
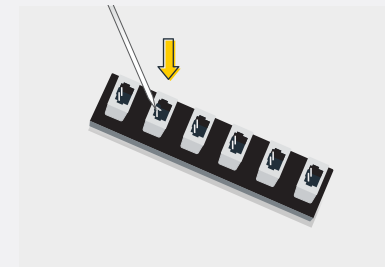
Not only will a light connected to the damaged port not work, but if the pins inside the port are bent to a point they are touching each other, this can result in all other lights in the system to stop working. This is a short circuit.



A short circuit can also result in overheating of the board, cable or batteries. If you suspect a short circuit, **DISCONNECT POWER IMMEDIATELY**. Batteries can fail, catch fire, or even explode if left connected to a short circuit for too long.

If you suspect you have a faulty component due to a bent pin, try the following steps:

If you look carefully inside each of the ports, each port contains 2 small pins that should be straight. You will be able to identify a faulty port if it has any bent pins.





CONTACT US

If you have an enquiry regarding the online shop, our products or a general enquiry please refer to our Frequently Asked Questions webpage.

Alternatively, you can contact our Customer Services team by visiting our online support portal.

support.lightmybricks.com

We thank you for purchasing this product and hope you enjoy!



lightmybricks.com