



**LIGHT<sup>MY</sup>  
BRICKS**



**LEGO THE MANDALORIAN HELMET  
75328 LIGHT KIT  
INSTALLATION GUIDE**

# Light My Bricks



## LEGO THE MANDALORIAN HELMET 75328 INSTALLATION GUIDE

Hi There!

We're here to help you get started on the LEGO

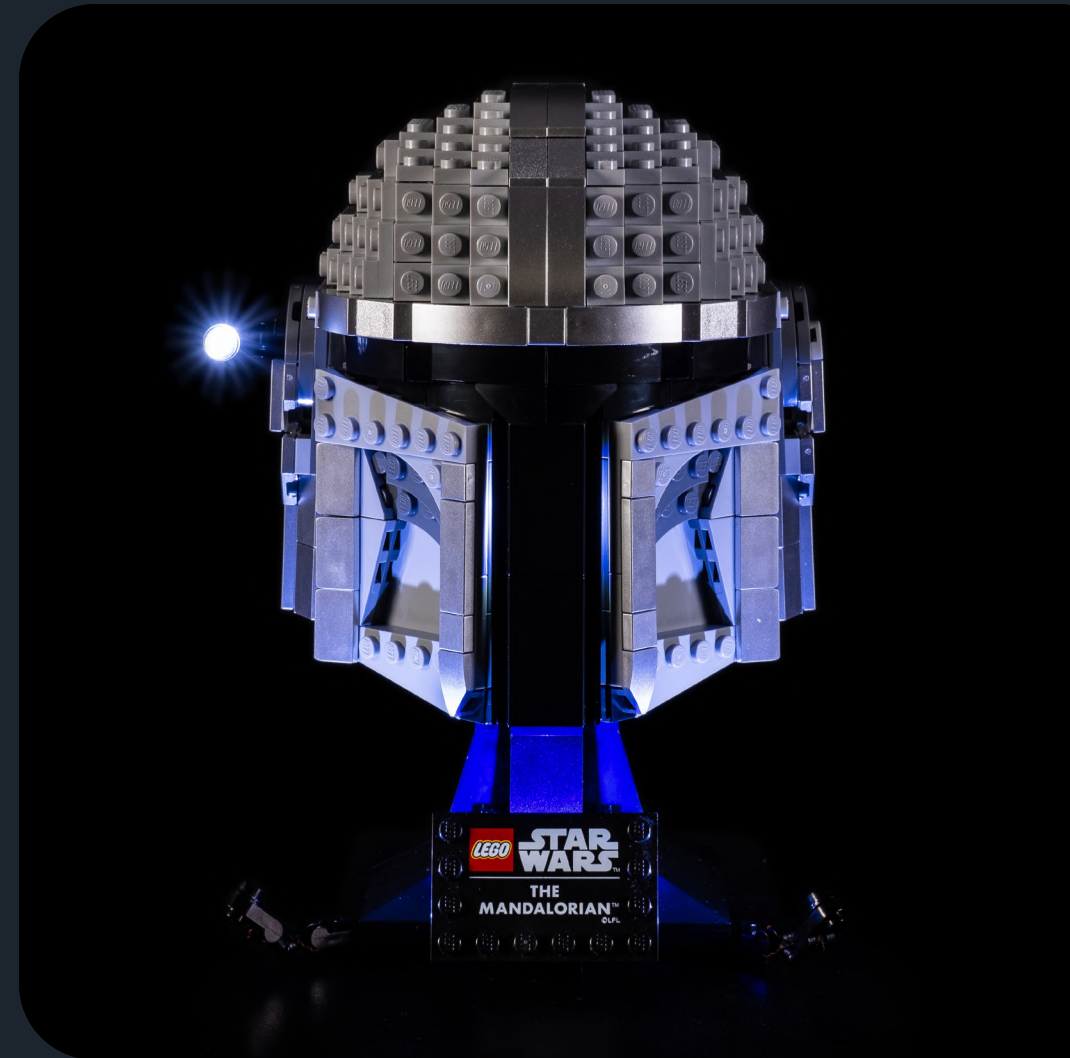
The Mandalorian Helmet 75328 Light Kit.

This PDF details the instructions for the LED light kit only.

If you run into any issues, please refer to the  
troubleshoot-ing section towards the end of this guide.

Have fun and enjoy!

INSTALLATION GUIDE





## PACKAGE CONTENTS:



1x Blue Large 30cm Bit Light  
1x Cool White 30cm Bit Light  
3x Cool White Large 30cm Bit Light



1x 6-Port Expansion Boards



1x USB Power Cable  
(Power Source not Included)

## ASSORTED BRICKS:



- 1x Plate 2x2 W Rounded Bottom - Trans Clear
- 1x Plate 1x1 - Trans Clear
- 1x Plate 1x2 MW Stud Jumper - Black
- 2x Plate 1x6 - Black
- 2x Tile 1x1 W Clip Round Edges - Black
- 2x Round Brick 1x1 - Black
- 2x Arm Skeleton, Bent with Clips (Horizontal Grip) - Black
- 4x Round Plate 1x1 Open Stud - Black
- 6x Plate 1x1 Mod Rounded w Handle - Black

## Contents

Before You Begin	5
Blueprint	8
Instructions	9
Final Product	23
Troubleshooting	24
Contact	29

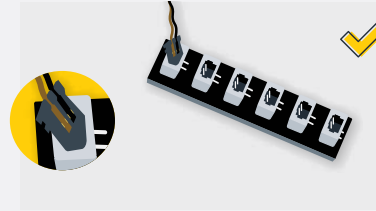
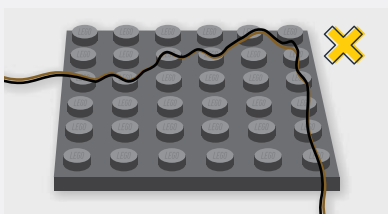
## Before You Begin



### Laying cables in between and underneath bricks

Cables can fit in between and underneath LEGO bricks, plates, and tiles providing they are laid correctly between the LEGO studs. Do NOT forcefully join LEGO together around cables; instead ensure they are laying comfortably in between each stud.

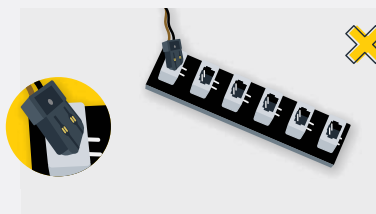
*CAUTION: Forcing LEGO to connect over a cable can result in damaging the cable and light.*



### Connecting Cable Connectors To Expansion Boards

Take extra care when inserting connectors to ports of Expansion Boards. Connectors can be inserted only one way. With the expansion board facing up, look for the soldered "=" symbol on the left side of the port. The connector side with the wires exposed should be facing toward the soldered "=" symbol as you insert into the port. If a plug won't fit easily into a port connector, do not force it.

*Incorrectly inserting the connector can result in bent pins inside the port or possible overheating of the expansion board when connected.*

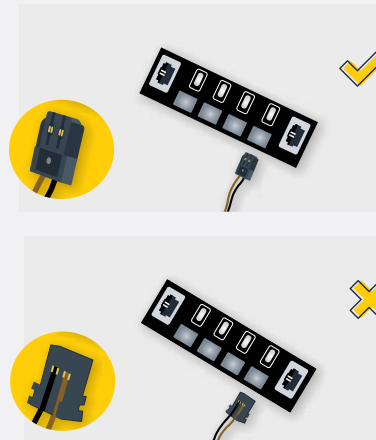


## Before You Begin



### Connecting Cable Connectors To Strip Lights

Take extra care when inserting connectors to ports on the Strip Lights. Connectors can be inserted only one way. With the Strip Light facing up, ensure the side of the connector with the wires exposed is facing down. If a plug won't fit easily into a port connector, don't force it. Doing so will damage the plug and the connector.



### Connecting Micro Cable Connectors To Micro Expansion Board Ports

Take extra care when inserting the micro connectors to micro ports of Micro Expansion Boards. Connecting Micro Bit Lights to Micro Expansion Boards is similar to connecting lights and cables to Strip Lights. With the expansion board facing up, ensure the side of the connector with the wires exposed is facing down. If a plug won't fit easily into a port connector, do not force it. Use your fingernail to push the plastic part of the connector to the micro port.

## Before You Begin

### Installing Bit Lights Under Lego® Bricks And Plates

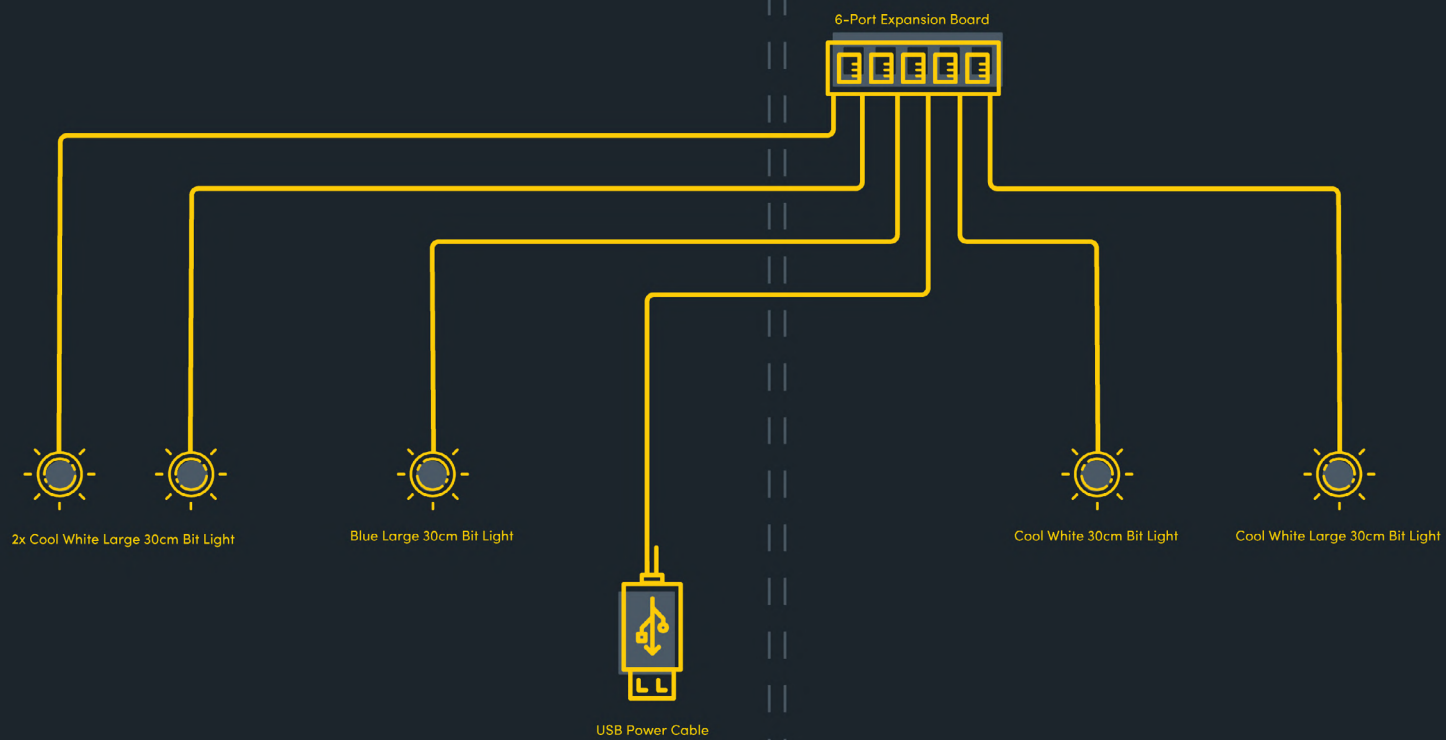
When installing Bit Lights under LEGO pieces, ensure they are placed the correct way up (Yellow LED component exposed). You can either place them directly on top of LEGO studs or in between.



# BLUEPRINT

Steps 1-5

Steps 6-10







# INSTRUCTIONS

To ensure a smooth installation of your light kit, please read and follow each step carefully. If you run into any issues, please refer to the online troubleshooting guide.



LEGEND:  DISCONNECT

 CONNECT / RECONNECT



TURN / FLIP



DIRECTIONAL



TWIST / BRAID



POWER ON / TEST



LEGENDE:  TRENNEN

 VERNINDEN / WIEDERVERBINDEN



WENDEN / KIPPEN



DIRECTIONAL



DREHEN / VERDREHEN



EINSCHALTEN / TESTEN



LÉGENDE:  DÉCONNECTER

 CONNECTER / RECONNECTER



TOUR / INCLINAISON



DIRECTIONNEL



TORSION / TRESSER



POWER ON / TEST



LEGGENDA:  SCOLLEGARE

 CONNETTI / RICONNETTI



ROTARE / INCLINARE



DIREZIONALE

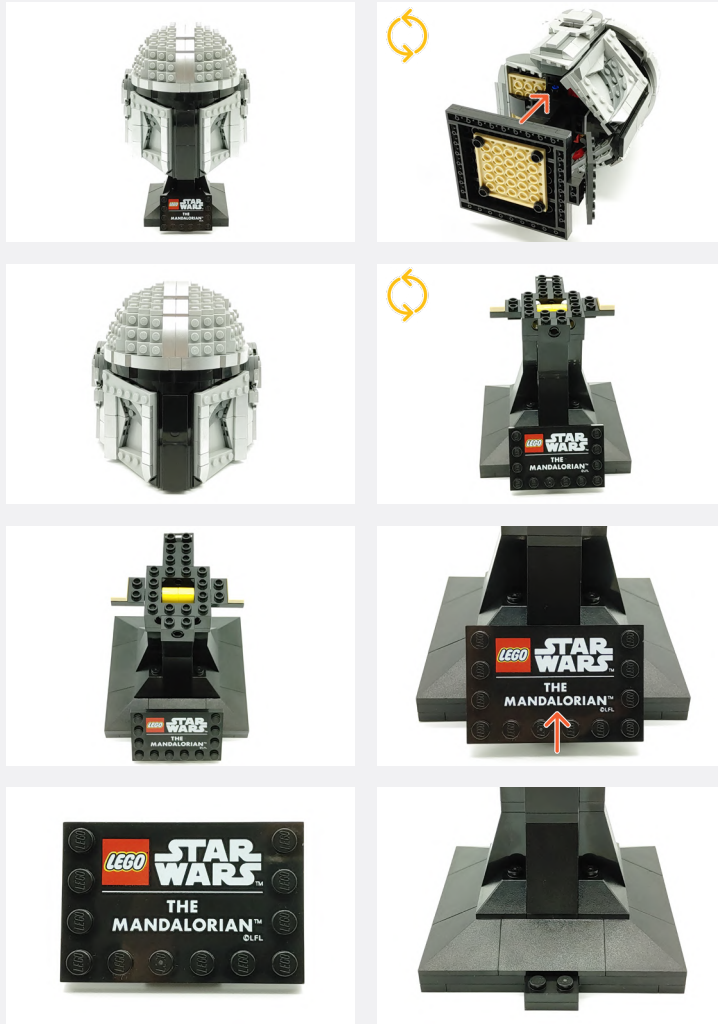


TWIST / TRECCIA

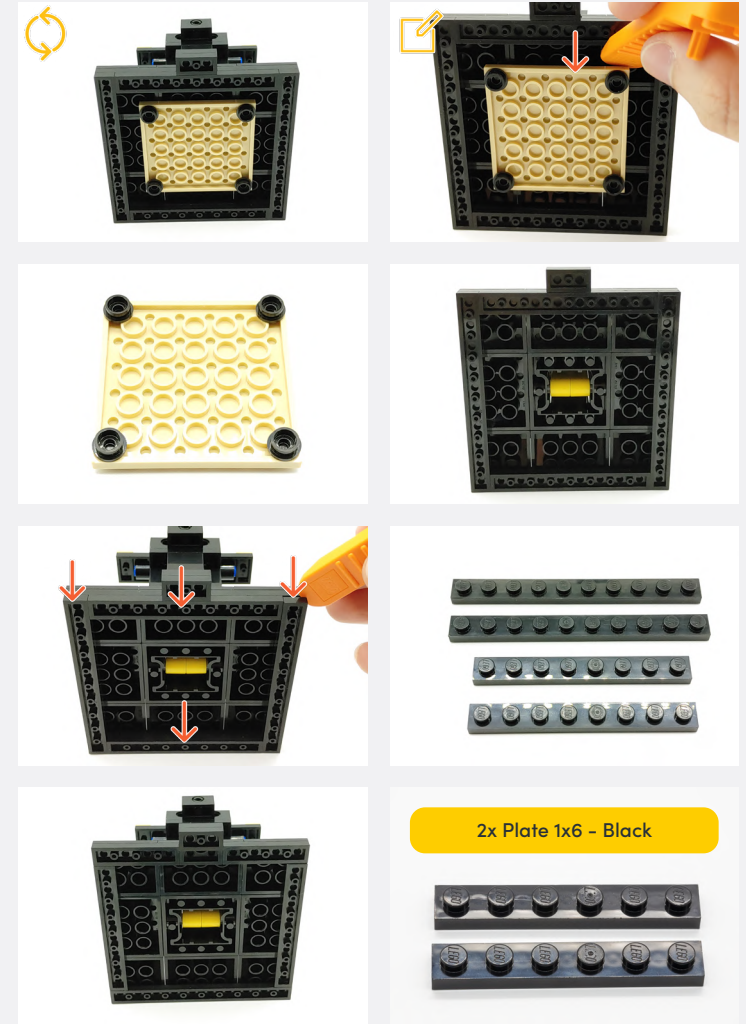


POWER ON / TEST

**1**



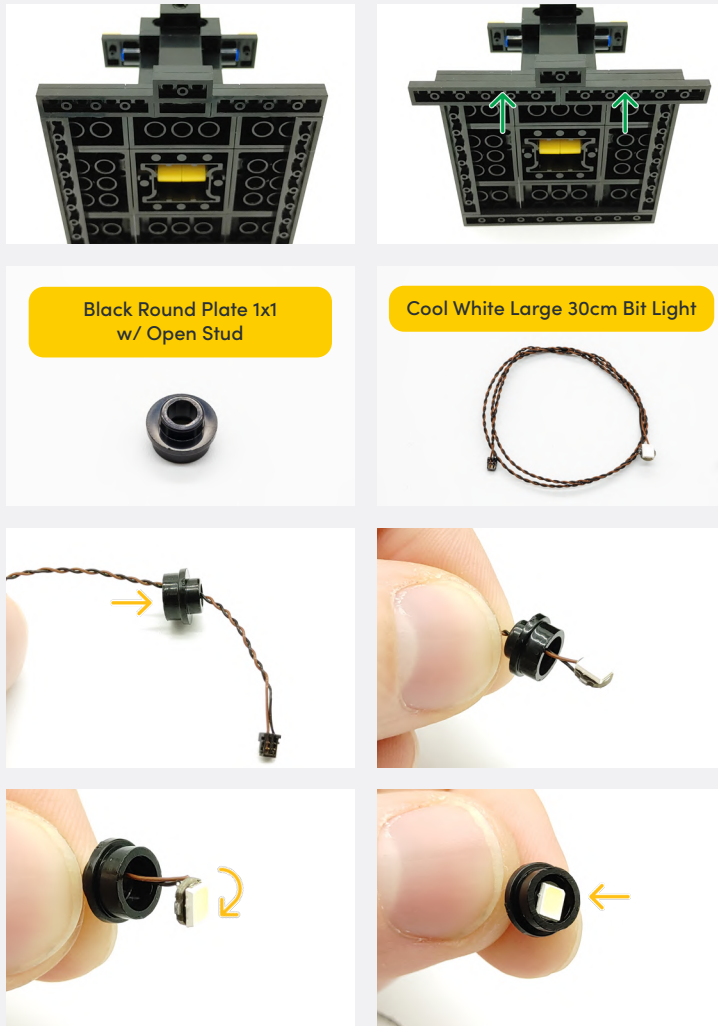
Use the LEGO Brick Separator Tool to help pry off parts



2x Plate 1x6 - Black

**Legend** → DISCONNECT → CONNECT / RECONNECT ↻ TURN / FLIP → DIRECTIONAL ↻ TWIST / BRAID \* POWER ON TEST 📌 NOTE ICON

**2**

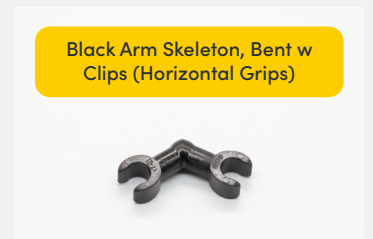
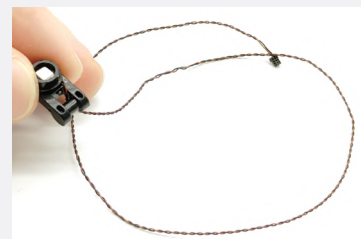
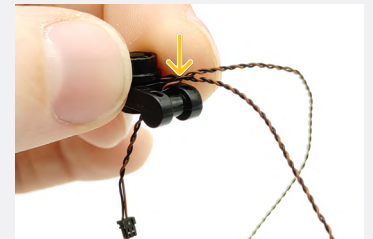
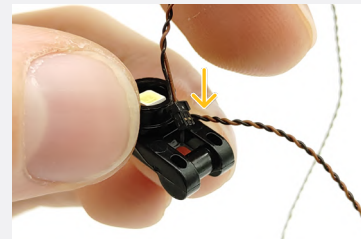


Black Round Plate 1x1 w/ Open Stud

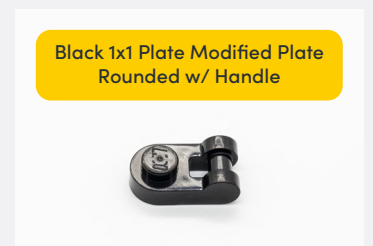
Cool White Large 30cm Bit Light



Black 1x1 Plate Modified Plate Rounded w/ Handle

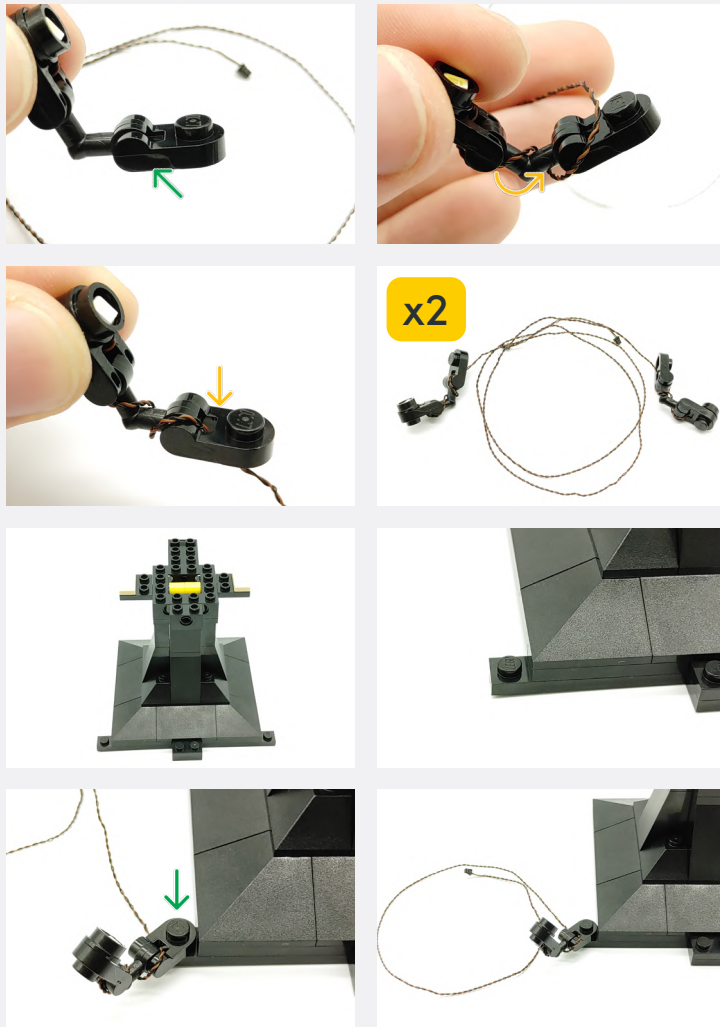


Black Arm Skeleton, Bent w Clips (Horizontal Grips)

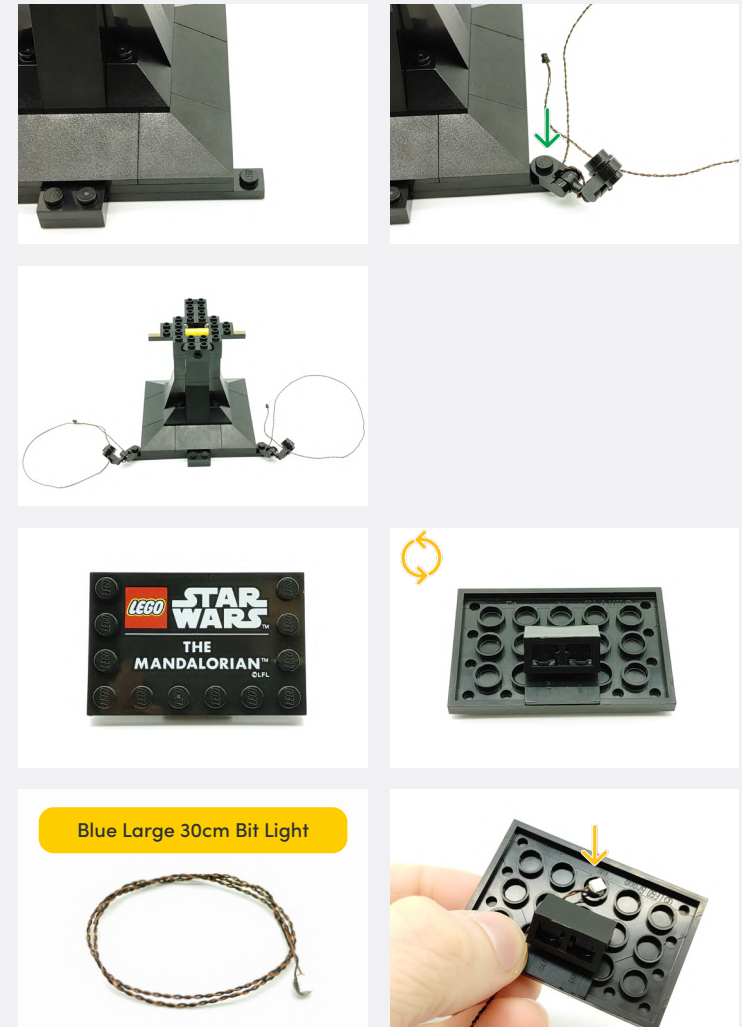


Black 1x1 Plate Modified Plate Rounded w/ Handle

**Legend** → DISCONNECT → CONNECT / RECONNECT ↻ TURN / FLIP → DIRECTIONAL ↻ TWIST / BRAID \* POWER ON TEST 📝 NOTE ICON

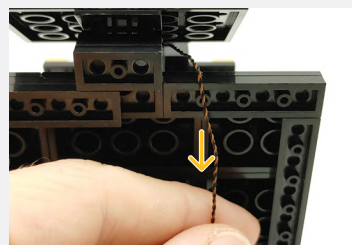
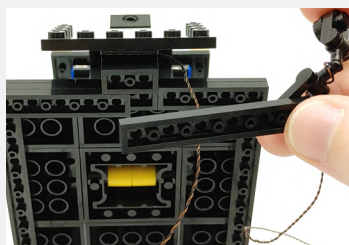
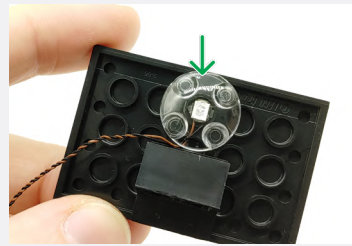


**3**

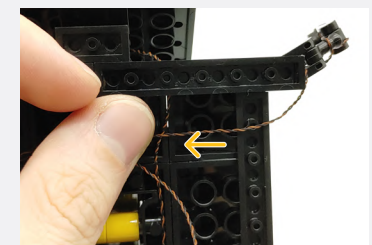
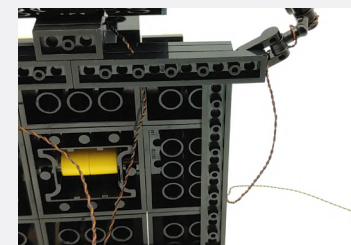
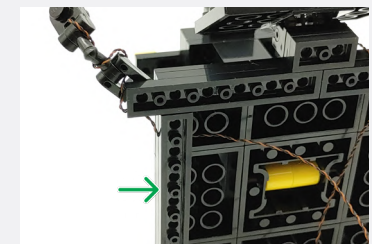
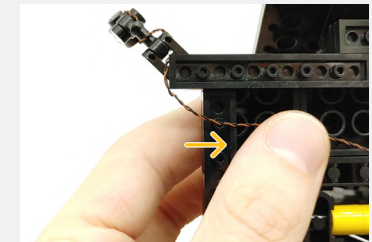
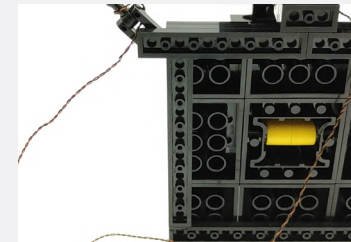
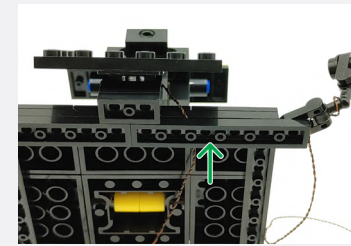


**Legend** → DISCONNECT → CONNECT / RECONNECT ↻ TURN / FLIP → DIRECTIONAL ↺ TWIST / BRAID \* POWER ON TEST 📝 NOTE ICON

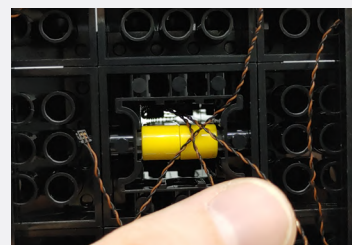
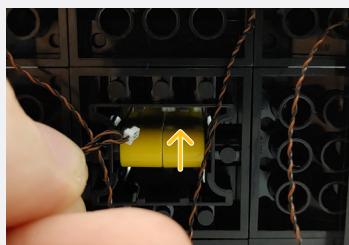
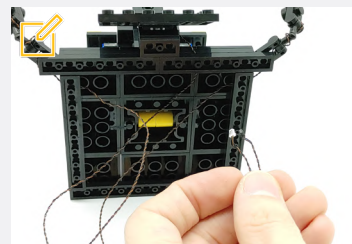
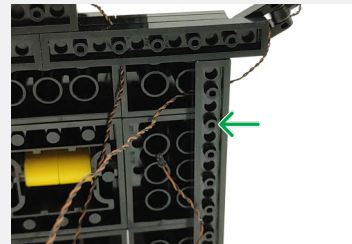
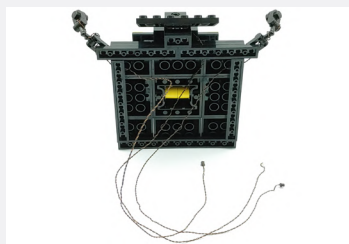
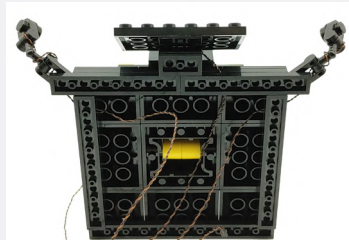
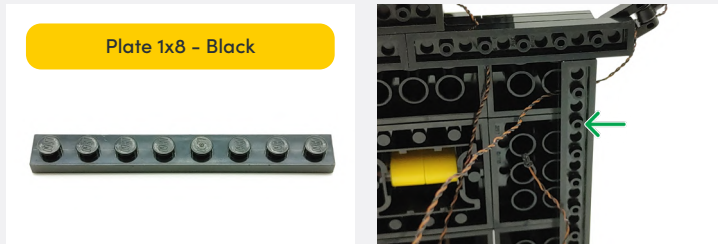
Plate 2x2 W Rounded Bottom - Trans Clear



**4**



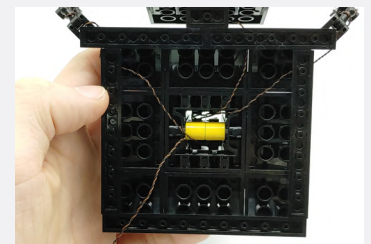
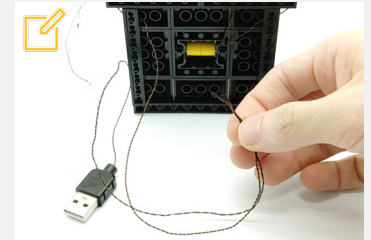
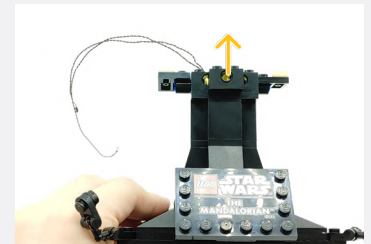
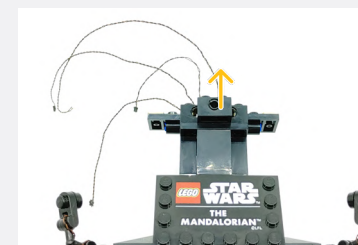
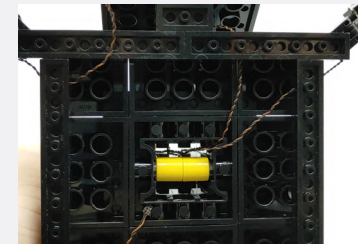
**Legend** → DISCONNECT → CONNECT / RECONNECT ↻ TURN / FLIP → DIRECTIONAL ↻ TWIST / BRAID \* POWER ON TEST 📝 NOTE ICON



**5**

Grab the cables from the sign and right spotlight

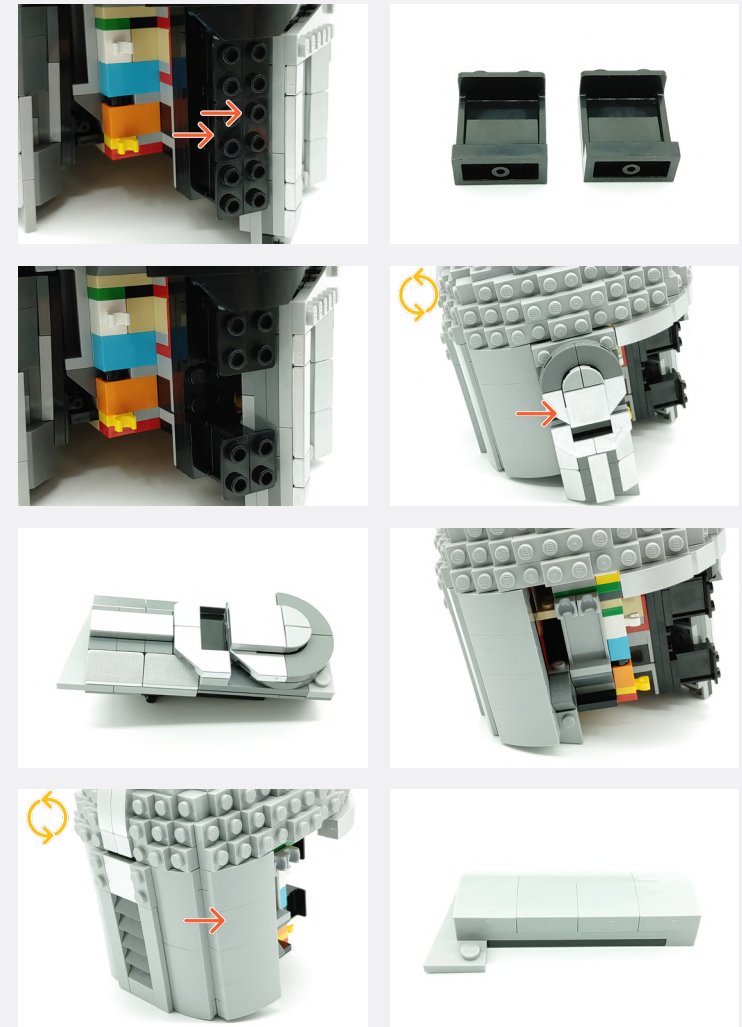
Grab the cables from the left spotlight and the usb power



Pull the USB Power Cable up but leave some below

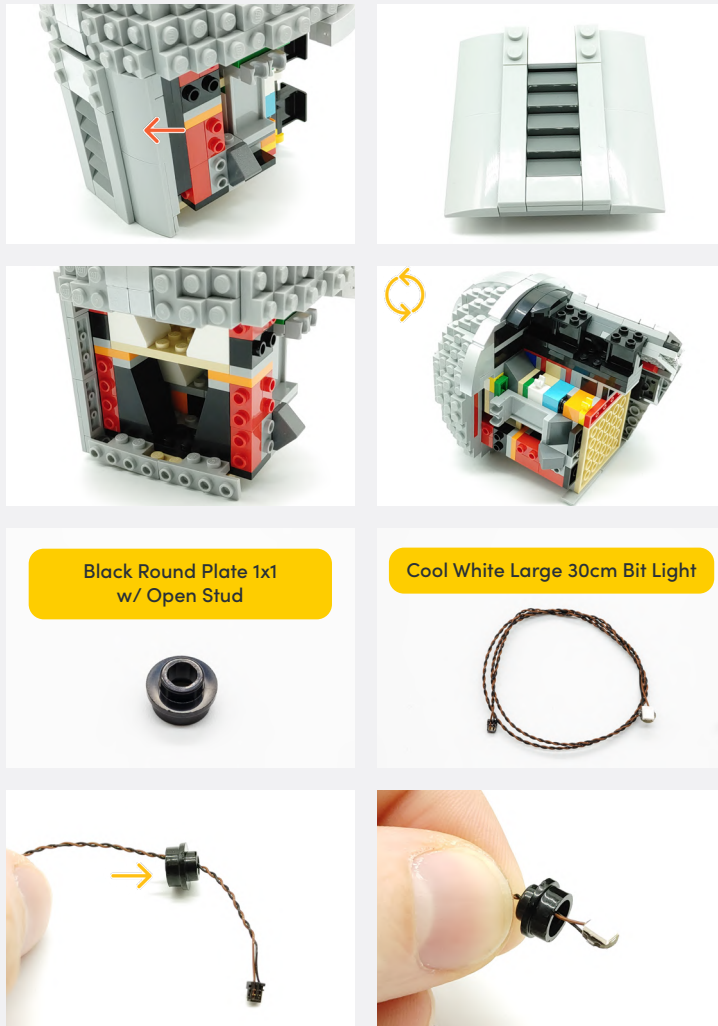
**Legend** → DISCONNECT → CONNECT / RECONNECT ↻ TURN / FLIP → DIRECTIONAL ↺ TWIST / BRAID ✨ POWER ON TEST 📝 NOTE ICON

6



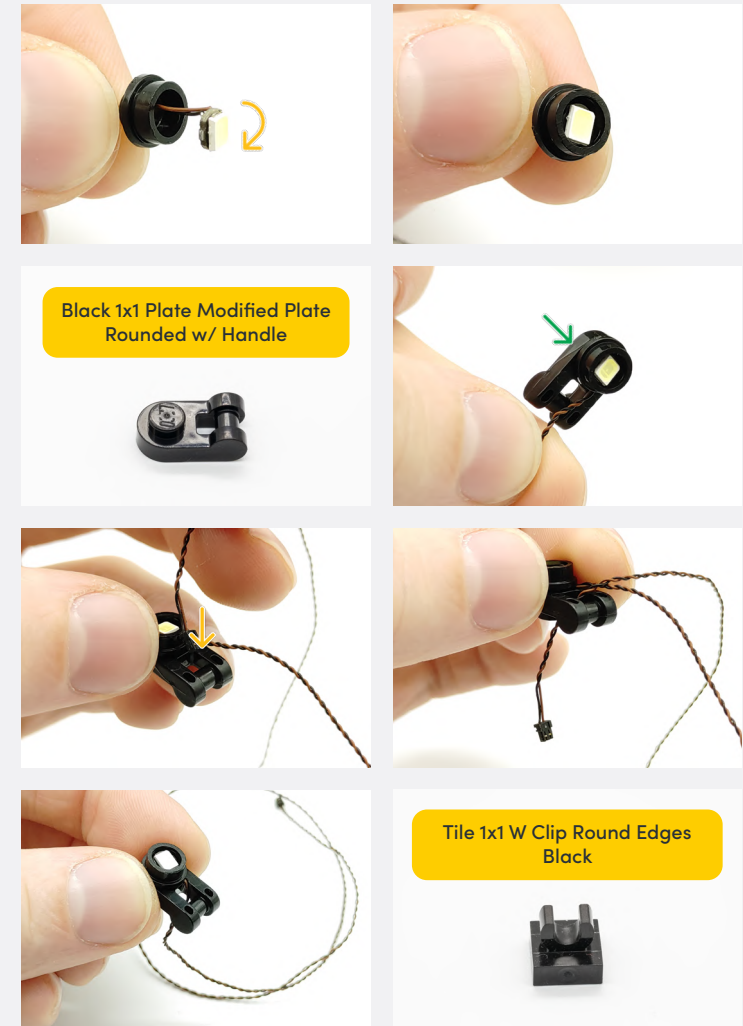
**Legend** → DISCONNECT → CONNECT / RECONNECT ↻ TURN / FLIP → DIRECTIONAL ↻ TWIST / BRAID \* POWER ON TEST 📝 NOTE ICON

**7**



Black Round Plate 1x1 w/ Open Stud

Cool White Large 30cm Bit Light

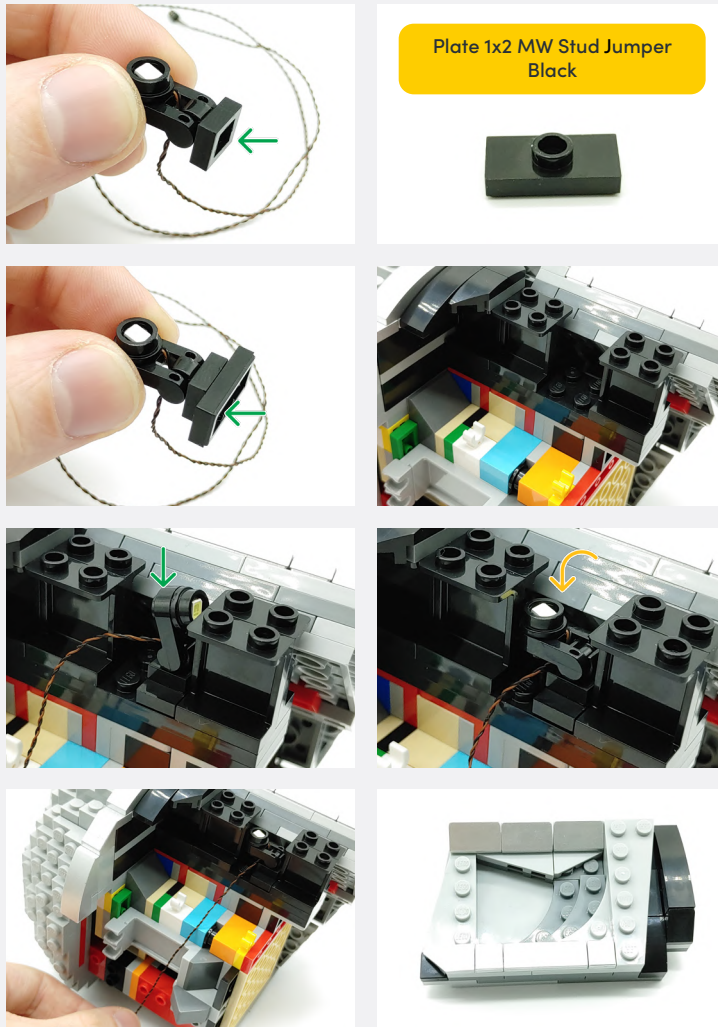


Black 1x1 Plate Modified Plate Rounded w/ Handle

Tile 1x1 W Clip Round Edges Black

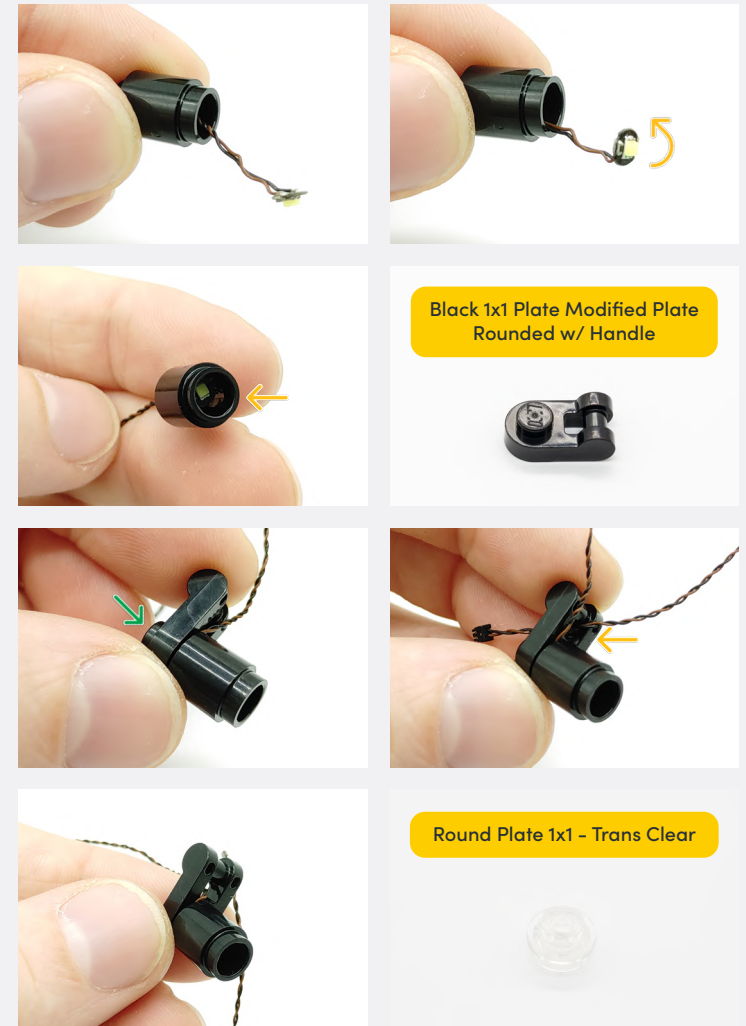
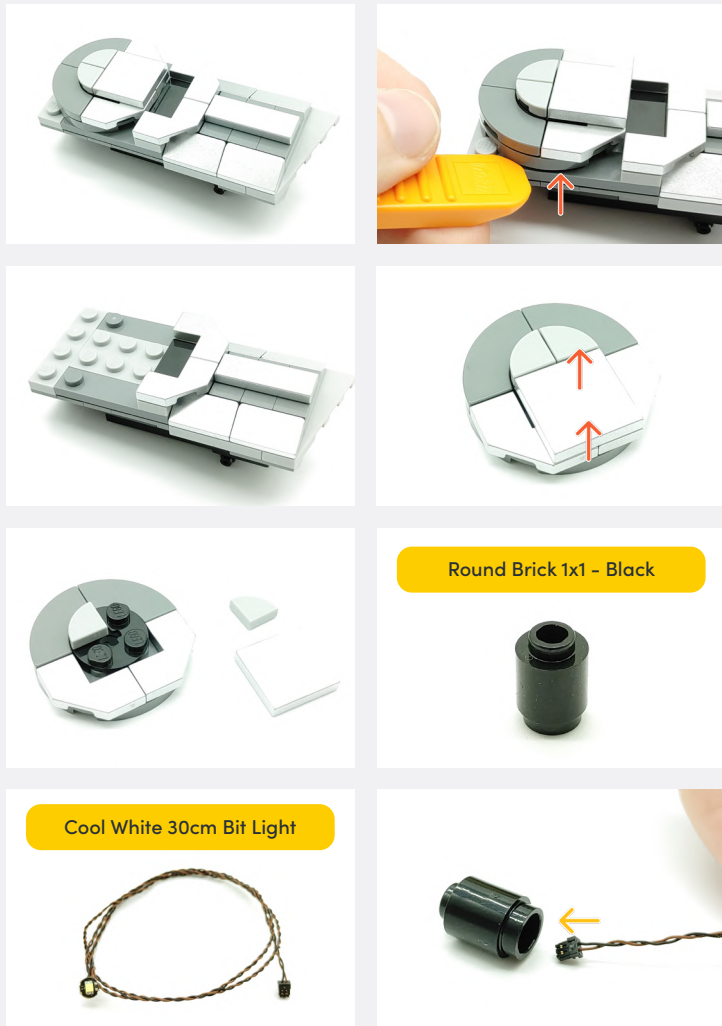
**Legend** → DISCONNECT → CONNECT / RECONNECT ↻ TURN / FLIP → DIRECTIONAL ↻ TWIST / BRAID ✨ POWER ON TEST 📝 NOTE ICON





**Legend**    → DISCONNECT    → CONNECT / RECONNECT    ↻ TURN / FLIP    → DIRECTIONAL    ↻ TWIST / BRAID    ✨ POWER ON TEST    📝 NOTE ICON

8



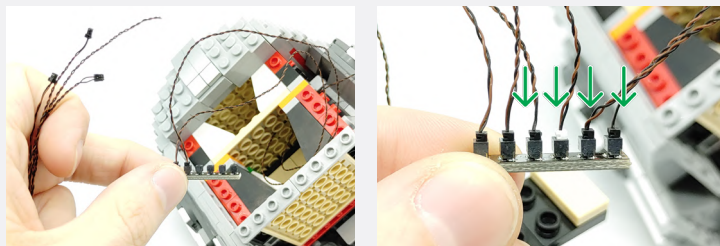
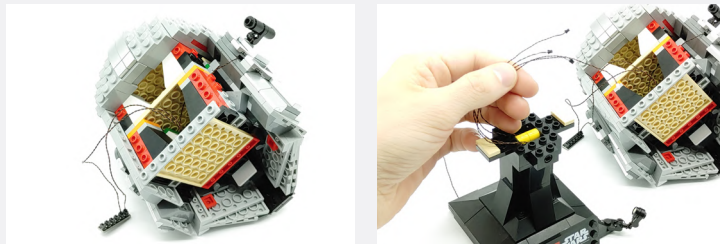
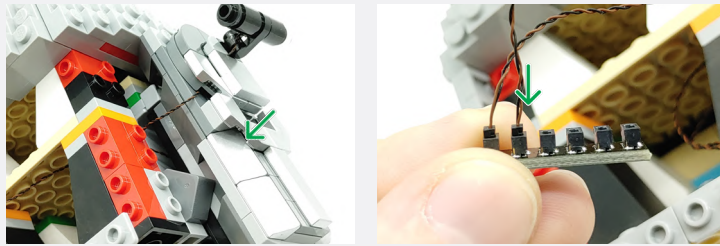
**Legend** → DISCONNECT → CONNECT / RECONNECT ↻ TURN / FLIP → DIRECTIONAL ↻ TWIST / BRAID \* POWER ON TEST 📝 NOTE ICON


	<p>Round Brick 1x1 - Black</p>
	<p>Black Round Plate 1x1 w/ Open Stud</p>
	<p>Tile 1x1 W Clip Round Edges Black</p>

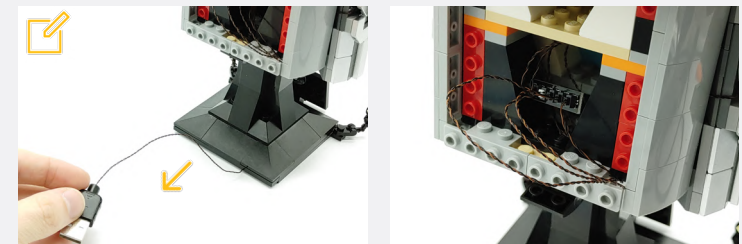
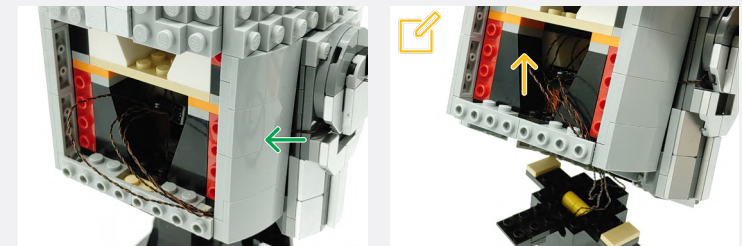
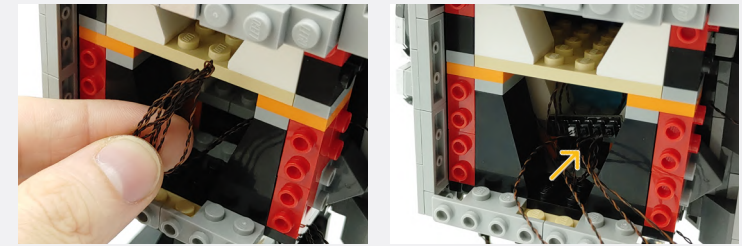

**Legend**


- DISCONNECT
- CONNECT / RECONNECT
- TURN / FLIP
- DIRECTIONAL
- TWIST / BRAID
- POWER ON TEST
- NOTE ICON

9



 Lay the head on the stand without connecting it



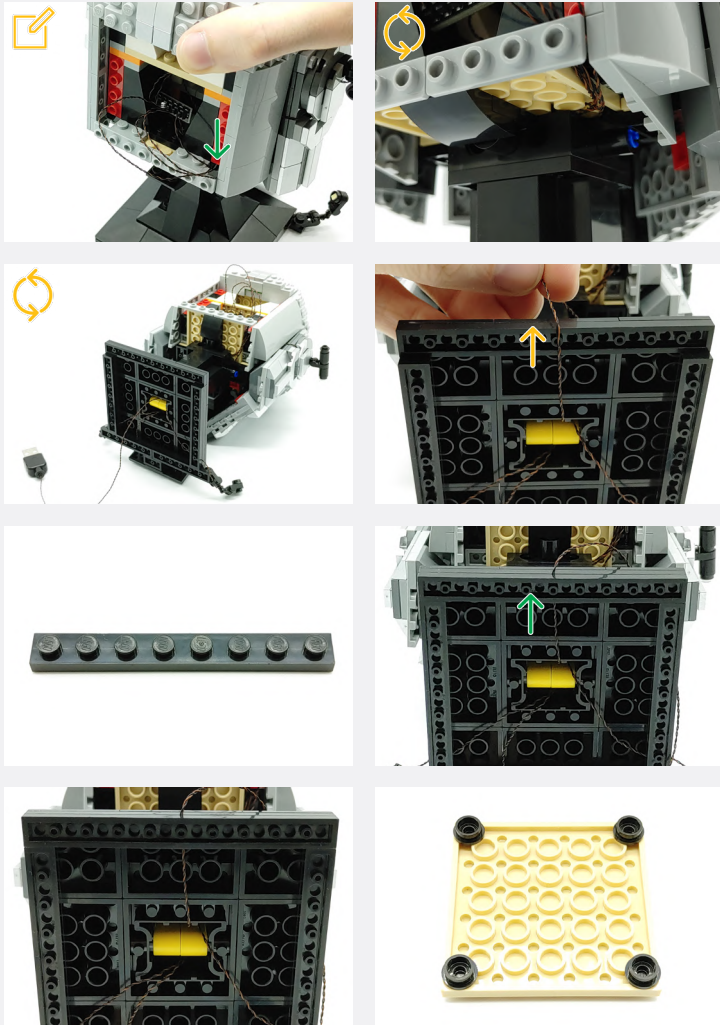
 Lift the head and lightly pull the cables through as you place it down

 Lightly pull the USB Power Cable as far as it can go without it pulling the 6-Port expansion board out of the head cavity

**Legend**    DISCONNECT    CONNECT / RECONNECT    TURN / FLIP    DIRECTIONAL    TWIST / BRAID    POWER ON TEST    NOTE ICON

✎ Reconnect the head to the stand and ensure the cables are in the positions shown

10

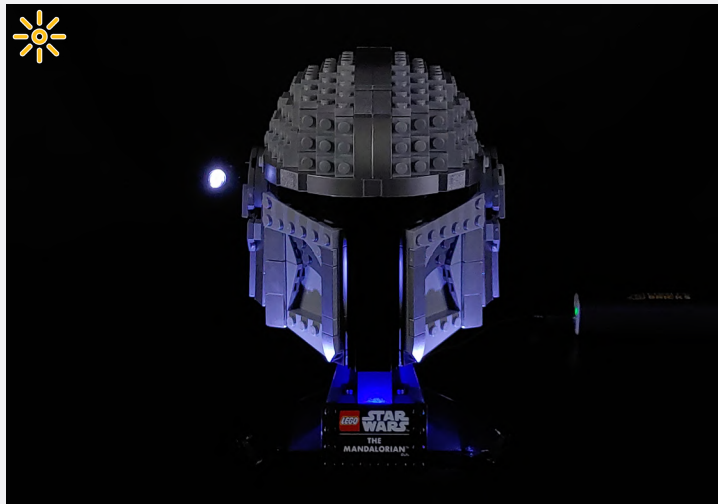


✎ Tilt the faceplates out as far as they go to make the light inside more visible

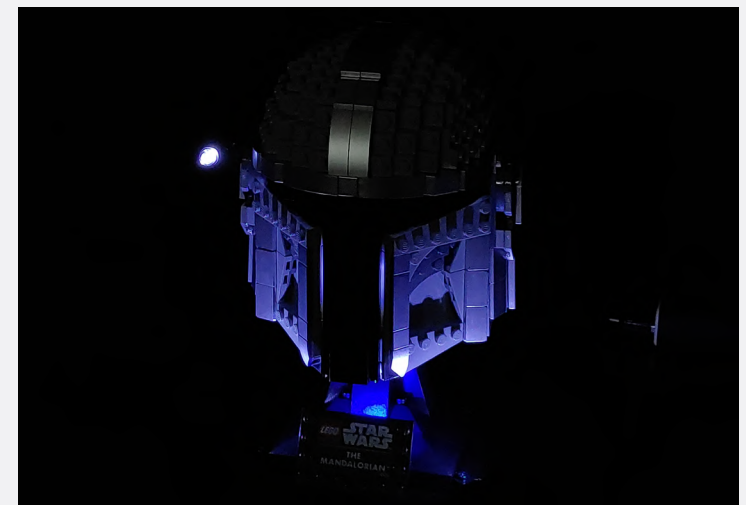
Legend

- DISCONNECT
- CONNECT / RECONNECT
- TURN / FLIP
- DIRECTIONAL
- TWIST / BRAID
- POWER ON TEST
- NOTE ICON

If you experience any issues with the lights not working and suspect an issue with a component, please try a different port on the expansion board to verify where the fault lies (with the light or expansion board). To correct any issues with expansion board ports, please view the section addressing expansion board issues in our troubleshooting section.



Connect the other end to a USB Power Bank, USB Wall Adaptor, or USB to AA Battery Pack (sold separately)

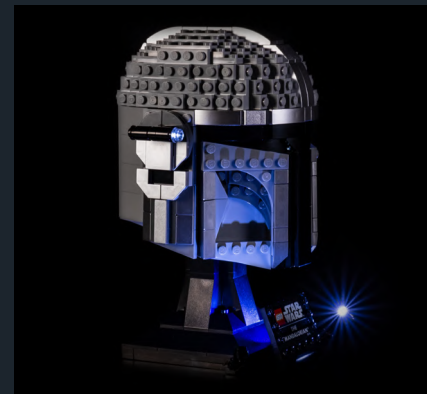
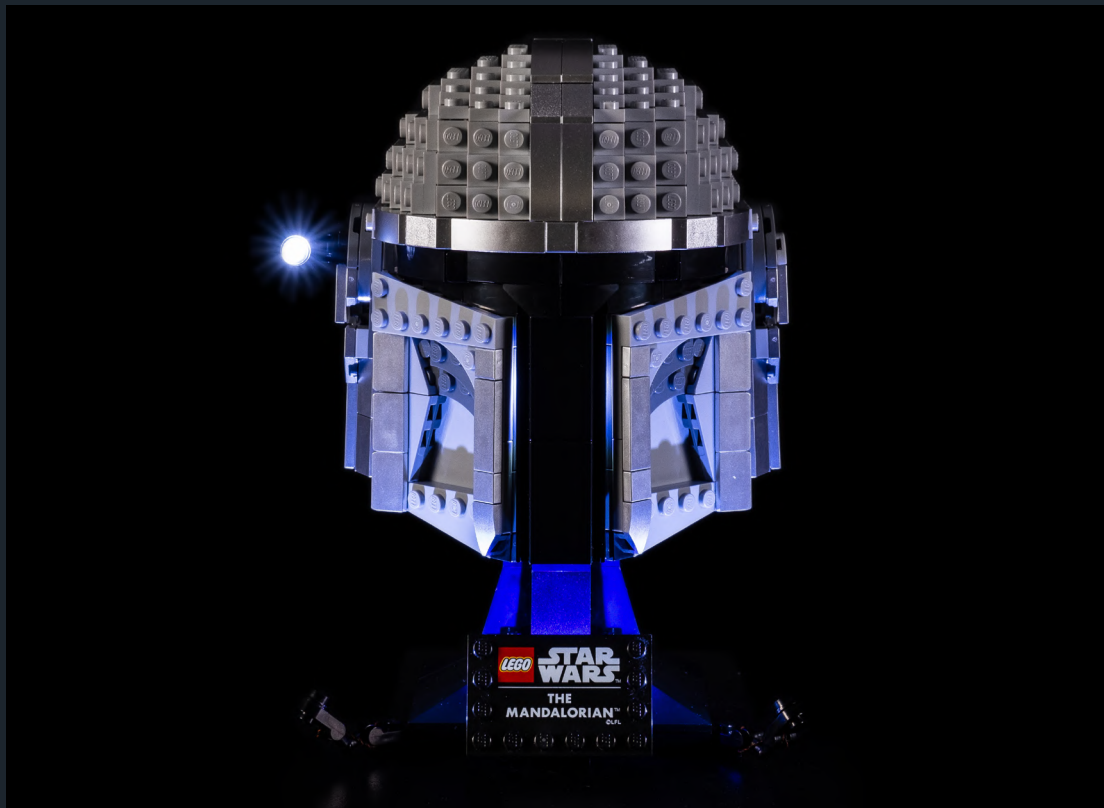


**Legend**   DISCONNECT   CONNECT / RECONNECT   TURN / FLIP   DIRECTIONAL   TWIST / BRAID   POWER ON TEST   NOTE ICON

## FINAL PRODUCT

This finally completes installation of the Light My Bricks

The Mandalorian Helmet 75328 Light Kit.





## TROUBLESHOOTING

Light My Bricks lighting kits contain individual components that are very small and can be easily damaged if not handled correctly.

To prevent unnecessary damage to components, we highly recommend that the User Guide section, **“Important things to note”** is read carefully. Follow the handling procedures in the User Guide to help prevent faults and damages to your Light My Bricks components.

If you are experiencing issues with your Light My Bricks set, watch our troubleshooting video or read on for a list of common causes to help you troubleshoot.



## Troubleshooting

**Firstly, ensure that the batteries have power using a battery charge gauge.**

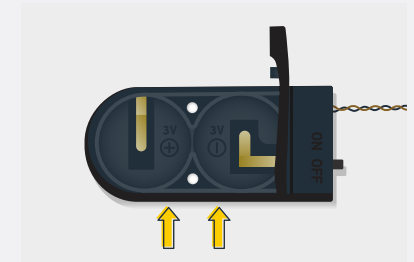
**If the batteries have no power, replace the batteries.**

**If the batteries still have power, check to see if the batteries have been inserted correctly into the battery pack.**

### Check For CR2032 Batteries Using The Flat Battery Pack

Inside the battery pack is a symbol indicating which side the (round) CR2032 battery should be inserted. Check that the “+” side of the battery pack has the battery with the “+” symbol facing downwards.

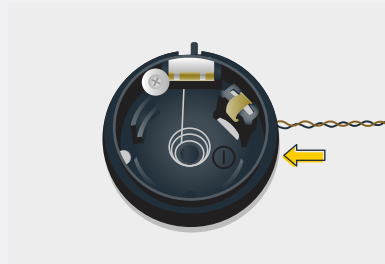
On the opposite side, the “-” side of the battery pack should have the battery flipped upside down, that is the “+” symbol facing upwards.



## Troubleshooting

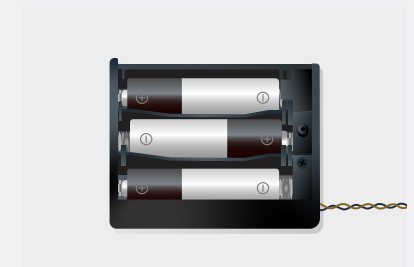
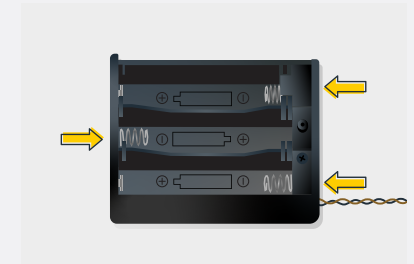
### Check For Cr2032 Batteries Using The Round Battery Pack

Inside the battery pack is a symbol indicating which side the (round) CR2032 battery should be inserted. In this case, for the stacked battery pack, ensure that BOTH batteries have the “+” symbol facing upwards.



### Check for AA batteries using the AA battery pack

Inside the battery pack are symbols indicating which direction the AA battery should be inserted. The flat side of the battery should be paired with the spring side of the battery pack.



If the batteries have been installed correctly and your kit still isn't operating correctly, the next step is to check the wiring.

# Troubleshooting

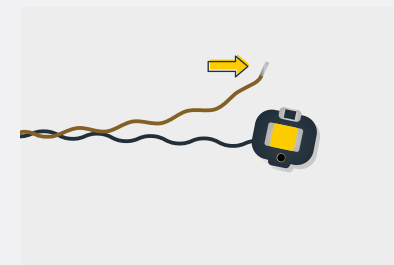
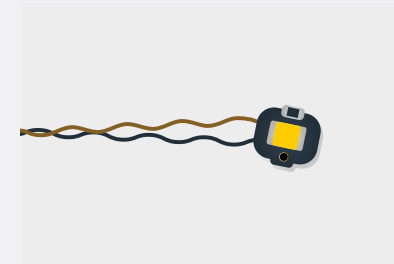
## Check Your Wires

In order for Light My Bricks components to fit in between and underneath LEGO bricks, the components need to be very small. Due to this nature, Light My Bricks components can be easily damaged when not handled correctly.

Be careful when removing unpacked components out of the packaging and ensure not to forcibly pull at the wires as this can damage the soldering that attach the wires to the LEDs.

If the wiring is detached from the LED itself, the light will not operate.

When connecting lights to your LEGO set, check that there are no pinched wires underneath or in between bricks and plates. When the wires are pinched and the exposed wires are touching each other, this can cause a crosswire and the lights to not function correctly.



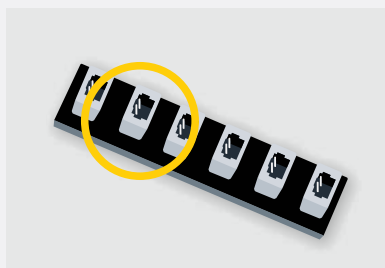
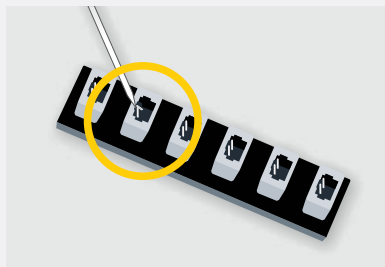
## Troubleshooting

### Check Your Expansion Board Ports/ Strip Light Ports / Effects Board Ports

It is important to note that connectors can only be inserted to the expansion board, strip light, or effects board ports in one direction.

Forcibly inserting connectors in the incorrect direction will result in damaging the pins inside each of the ports on your component board.

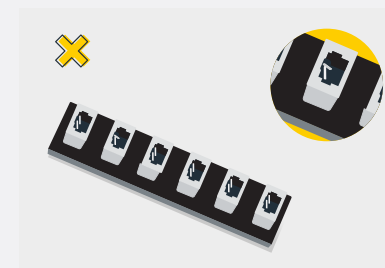
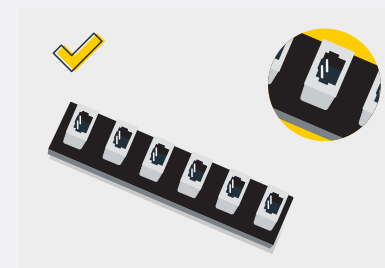
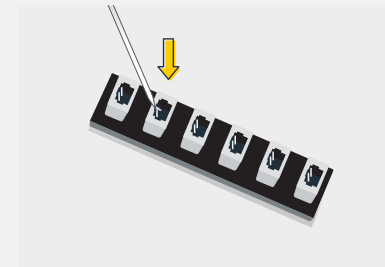
Not only will a light connected to the damaged port not work, but if the pins inside the port are bent to a point they are touching each other, this can result in all other lights in the system to stop working. This is a short circuit.



A short circuit can also result in overheating of the board, cable or batteries. If you suspect a short circuit, **DISCONNECT POWER IMMEDIATELY**. Batteries can fail, catch fire, or even explode if left connected to a short circuit for too long.

If you suspect you have a faulty component due to a bent pin, try the following steps:

If you look carefully inside each of the ports, each port contains 2 small pins that should be straight. You will be able to identify a faulty port if it has any bent pins.





## CONTACT US

If you have an enquiry regarding the online shop, our products or a general enquiry please refer to our Frequently Asked Questions webpage.

Alternatively, you can contact our Customer Services team by visiting our online support portal.

[support.lightmybricks.com](https://support.lightmybricks.com)

We thank you for purchasing this product and hope you enjoy!



[lightmybricks.com](http://lightmybricks.com)