



**LIGHT^{MY}
BRICKS**



**LEGO® BOUTIQUE HOTEL
#10297 LIGHT KIT
INSTALLATION GUIDE**

Light My Bricks



LEGO® BOUTIQUE HOTEL #10297 LIGHT KIT INSTALLATION GUIDE

Hi There!

We're here to help you get started on the LEGO®
Boutique Hotel (10297) Light Kit.

This PDF details the instructions for the LED light kit only.

If you run into any issues, please refer to the
troubleshoot-ing section towards the end of this guide.

Have fun and enjoy!

INSTALLATION GUIDE



PACKAGE CONTENTS:



9x Warm White Strip Light
 6x White 30cm Bit Light
 10x White 15cm Bit Light*
 1x Flashing White 30cm Bit Light
 1x Lamp Post White



1 x 2-Port Expansion Board
 4 x 6-port expansion Board
 1 x 8-port expansion Board*
 10 x Adhesive Squares



3 x 30cm Connecting Cable*
 5 x 15cm Connecting Cable
 2 x 5cm Connecting Cable
 4 x Wireless Power Connectors



1 x USB Power Cable
 (Power Source not Included)

LEGO PIECES:



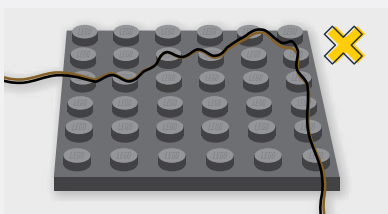
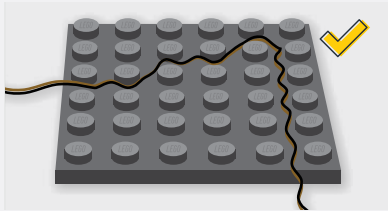
- 8 x Plate 1x6 (any colour)
- 5 x Round Plate 1x1 Open Stud – Black
- 8 x Plate 1x1 Mod Rounded w Handle – Black
- 4 x Arm Skeleton, Bent with Clips (Horizontal Grip) – Black
- 2 x Round Plate 1x1 Open Stud – White
- 4 x Round Plate 1x1 – Trans Clear
- 4 x Plate 1x1 – Trans Clear

* Indicates 1 extra component has been included just in case!

Contents

Before You Begin	4
Blueprint	8
Instructions	9
Final Product	52
Troubleshooting	53
Contact	58

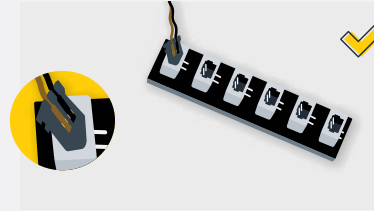
Before You Begin



Laying cables in between and underneath bricks

Cables can fit in between and underneath LEGO® bricks, plates, and tiles providing they are laid correctly between the LEGO® studs. Do NOT forcefully join LEGO® together around cables; instead ensure they are laying comfortably in between each stud.

CAUTION: Forcing LEGO® to connect over a cable can result in damaging the cable and light.

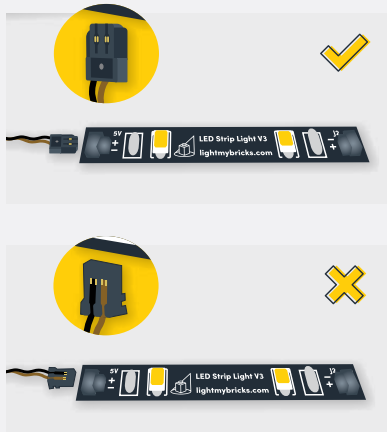


Connecting Cable Connectors To Expansion Boards

Take extra care when inserting connectors to ports of Expansion Boards. Connectors can be inserted only one way. With the expansion board facing up, look for the soldered “=” symbol on the left side of the port. The connector side with the wires exposed should be facing toward the soldered “=” symbol as you insert into the port. If a plug won’t fit easily into a port connector, do not force it.

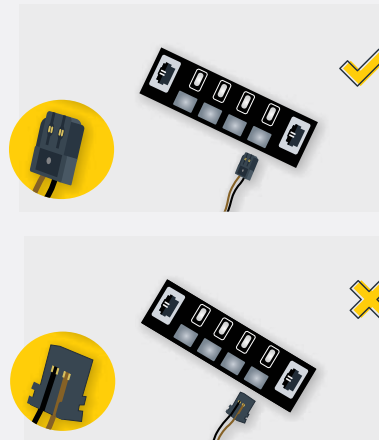
Incorrectly inserting the connector can result in bent pins inside the port or possible overheating of the expansion board when connected.

Before You Begin



Connecting Cable Connectors To Strip Lights

Take extra care when inserting connectors to ports on the Strip Lights. Connectors can be inserted only one way. With the Strip Light facing up, ensure the side of the connector with the wires exposed is facing down. If a plug won't fit easily into a port connector, don't force it. Doing so will damage the plug and the connector.



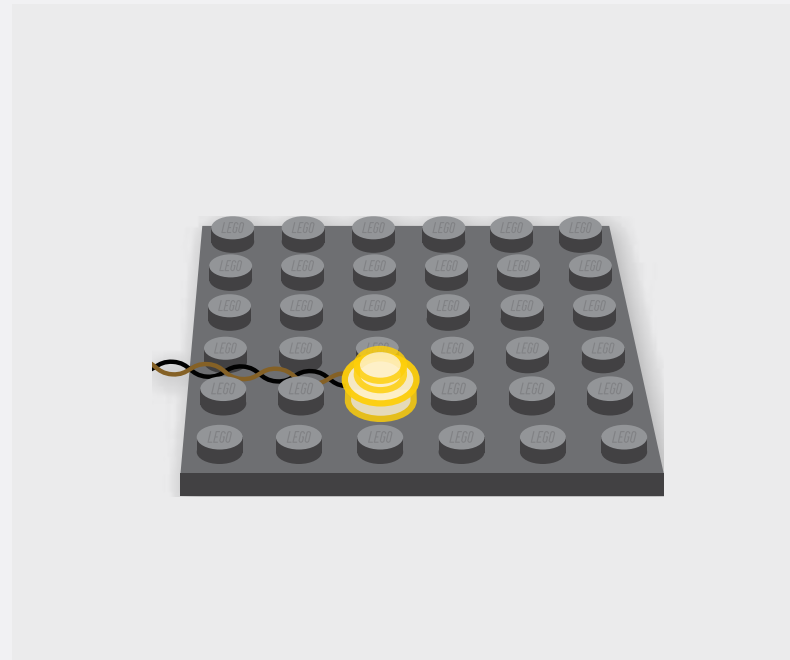
Connecting Micro Cable Connectors To Micro Expansion Board Ports

Take extra care when inserting the micro connectors to micro ports of Micro Expansion Boards. Connecting Micro Bit Lights to Micro Expansion Boards is similar to connecting lights and cables to Strip Lights. With the expansion board facing up, ensure the side of the connector with the wires exposed is facing down. If a plug won't fit easily into a port connector, do not force it. Use your fingernail to push the plastic part of the connector to the micro port.

Before You Begin

Installing Bit Lights Under Lego® Bricks And Plates

When installing Bit Lights under LEGO® pieces, ensure they are placed the correct way up (Yellow LED component exposed). You can either place them directly on top of LEGO® studs or in between.





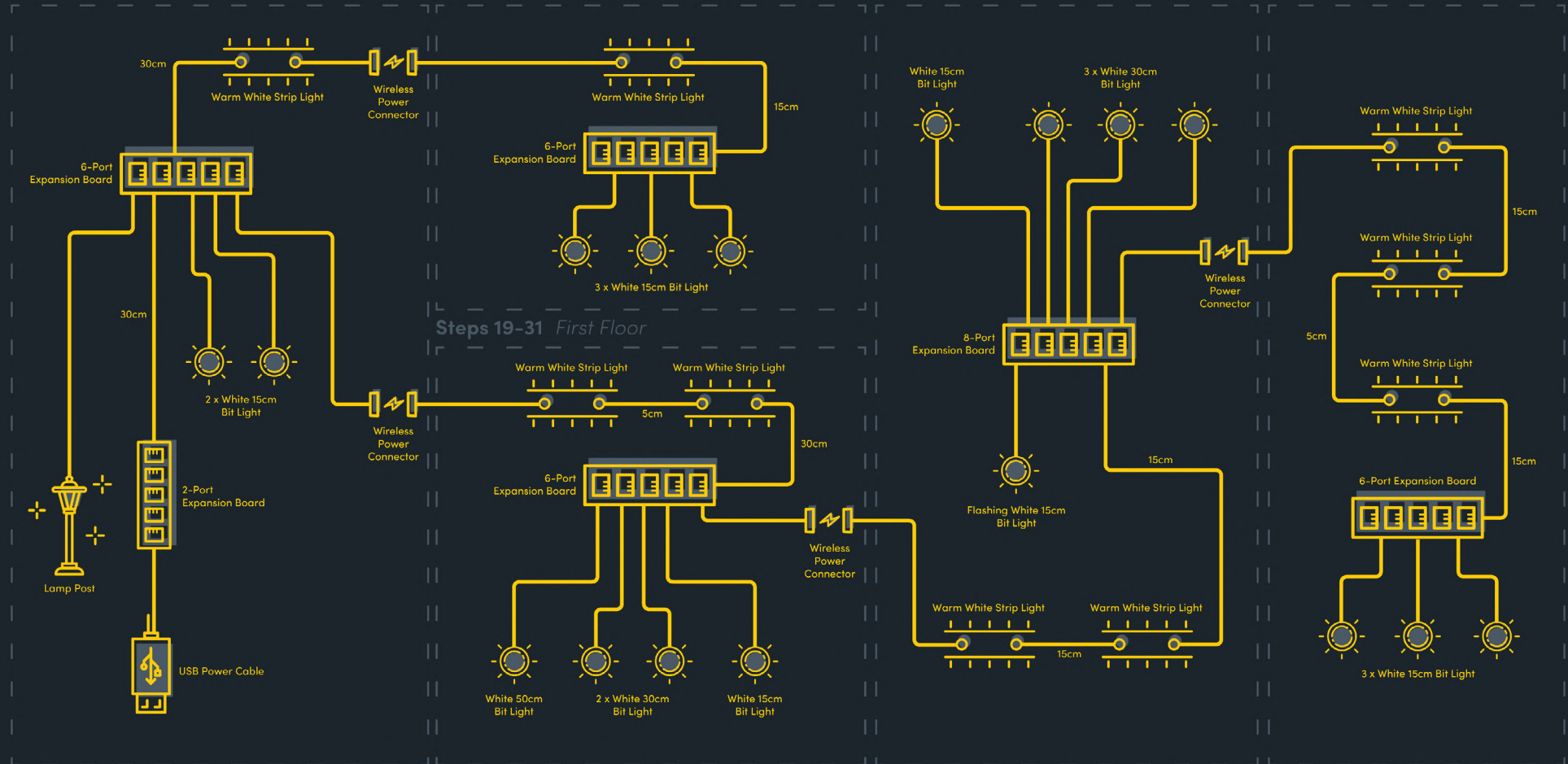
BLUEPRINT

Steps 1-11 *Ground Floor*

Steps 12-18 *Balcony*

Steps 32-41 *Second Floor*

Steps 42-50 *Roof*





INSTRUCTIONS

To ensure a smooth installation of your light kit, please read and follow each step carefully. If you run into any issues, please refer to the online troubleshooting guide.

	LEGEND:		DISCONNECT		CONNECT / RECONNECT ✓		TURN / FLIP		DIRECTIONAL		TWIST / BRAID		POWER ON / TEST
	LEGENDE:		TRENNEN		VERBINDEN / WIEDERVERBINDEN		WENDEN / KIPPEN		DIRECTIONAL		DREHEN / VERDREHEN		EINSCHALTEN / TESTEN
	LÉGENDE:		DÉCONNECTER		CONNECTER / RECONNECTER		TOUR / INCLINAISON		DIRECTIONNEL		TORSION / TRESSER		POWER ON / TEST
	LEGGENDA:		SCOLLEGARE		CONNETTI / RICONNETTI		ROTARE / INCLINARE		DIREZIONALE		TWIST / TRECCIA		POWER ON / TEST

1

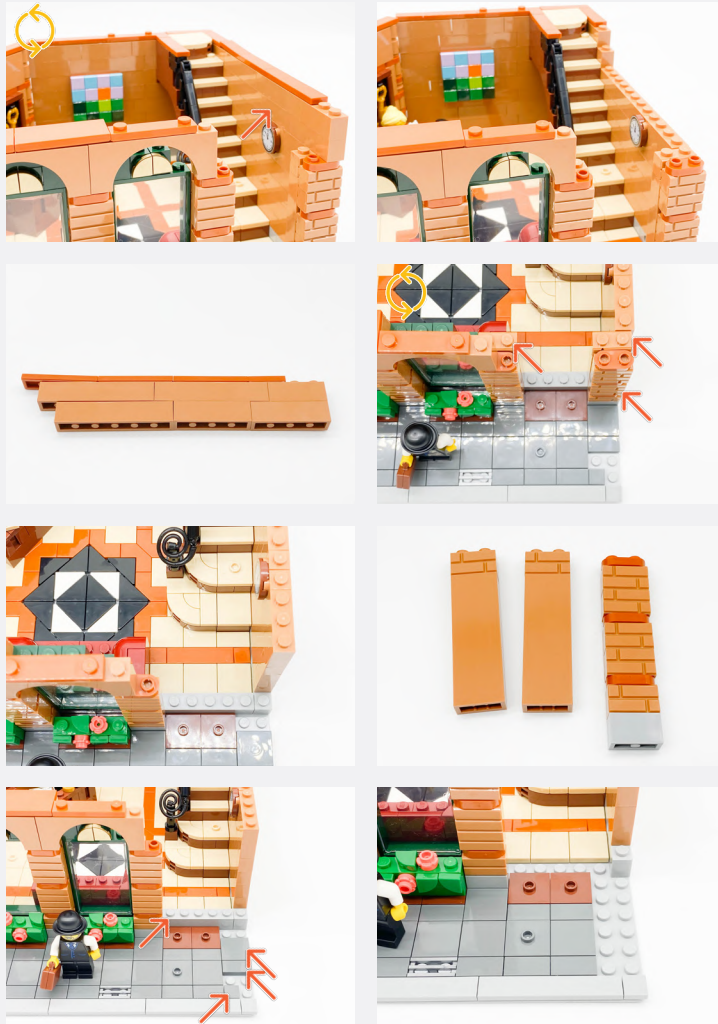


2

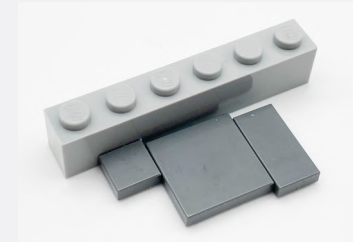


Legend

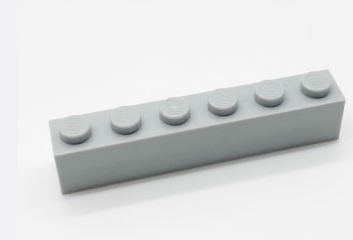
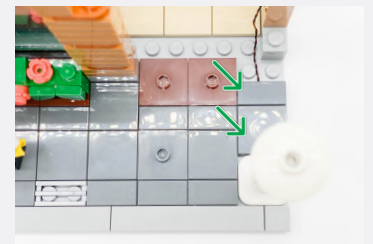
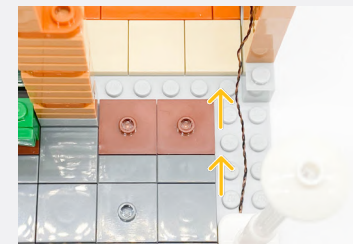
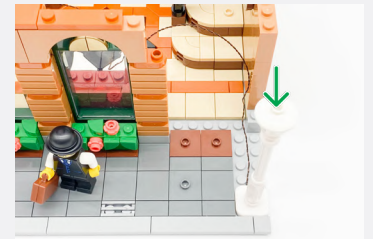
- DISCONNECT
- CONNECT / RECONNECT
- TURN / FLIP
- DIRECTIONAL
- TWIST / BRAID
- POWER ON TEST
- NOTE ICON



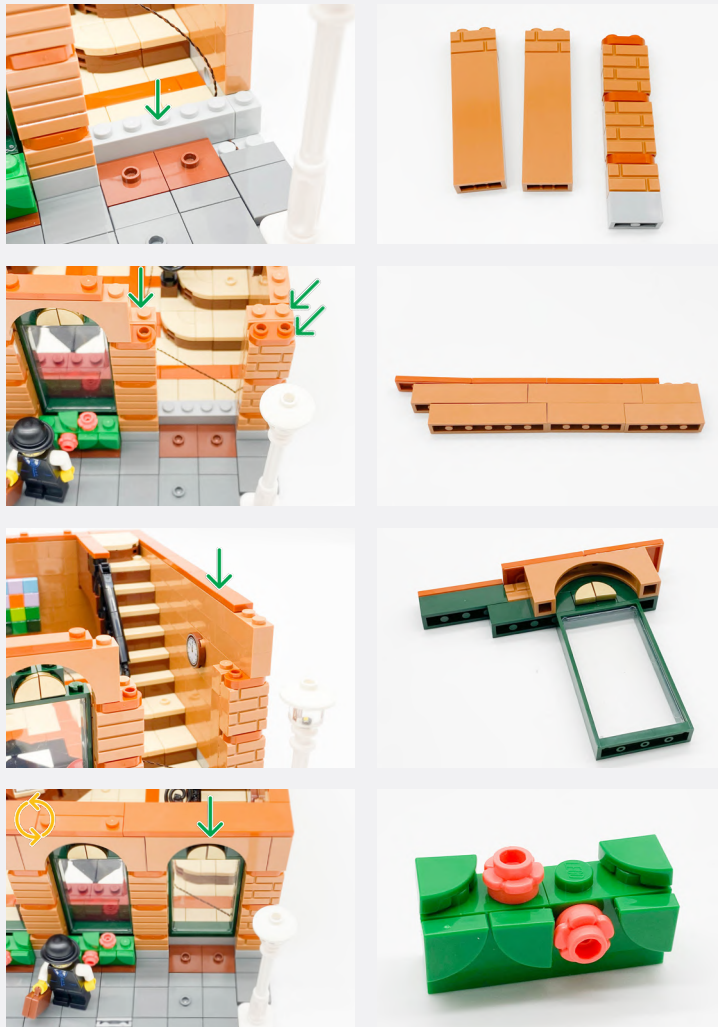
3



White Lamp Post



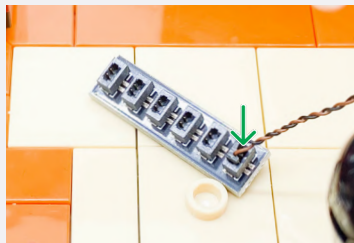
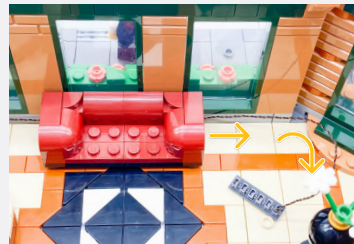
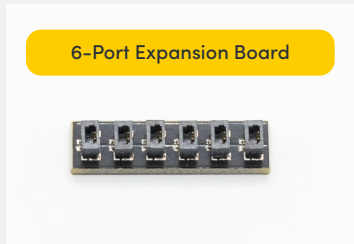
Legend → DISCONNECT → CONNECT / RECONNECT ↻ TURN / FLIP → DIRECTIONAL ↻ TWIST / BRAID * POWER ON TEST 📝 NOTE ICON



4



Legend → DISCONNECT → CONNECT / RECONNECT ↻ TURN / FLIP → DIRECTIONAL ↻ TWIST / BRAID ✨ POWER ON TEST 📝 NOTE ICON



Pull the Black pole down slightly so there is a gap in the Trans Yellow LEGO piece



Legend

- DISCONNECT
- CONNECT / RECONNECT
- TURN / FLIP
- DIRECTIONAL
- TWIST / BRAID
- POWER ON TEST
- NOTE ICON



6



Legend → DISCONNECT → CONNECT / RECONNECT ↻ TURN / FLIP → DIRECTIONAL ↻ TWIST / BRAID * POWER ON TEST 📝 NOTE ICON

7



2 x 30cm Connecting Cable

8



Legend

- DISCONNECT
- CONNECT / RECONNECT
- ↻ TURN / FLIP
- DIRECTIONAL
- ↻↻ TWIST / BRAID
- ✦ POWER ON TEST
- 📝 NOTE ICON

Grab one (of two) 30cm Connecting Cable and thread it as shown



9

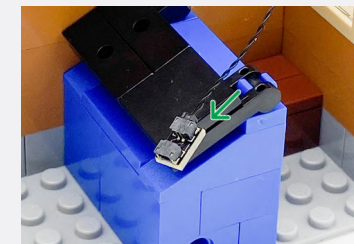
Grab the second 30cm Connecting Cable and thread it as shown



10



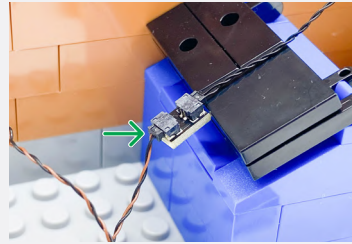
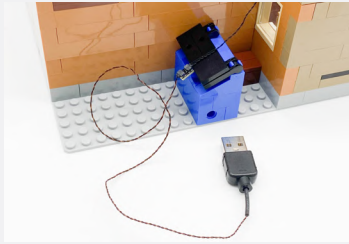
2-Port Expansion Board



USB Power Cable

Legend → DISCONNECT → CONNECT / RECONNECT ↻ TURN / FLIP → DIRECTIONAL ↻ TWIST / BRAID ✨ POWER ON TEST 📝 NOTE ICON

If you experience any issues with the lights not working and suspect an issue with a component, please try a different port on the expansion board to verify where the fault lies (with the light or expansion board). To correct any issues with expansion board ports, please view the section addressing expansion board issues in our troubleshooting section.



Connect to a USB Power Bank, AA Battery Pack, or USB Wall Adapter (each sold separately)

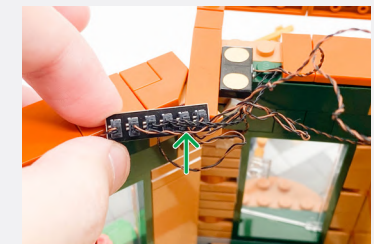
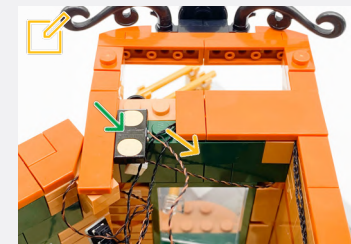
11



Wireless Power Connector (Tile Side)



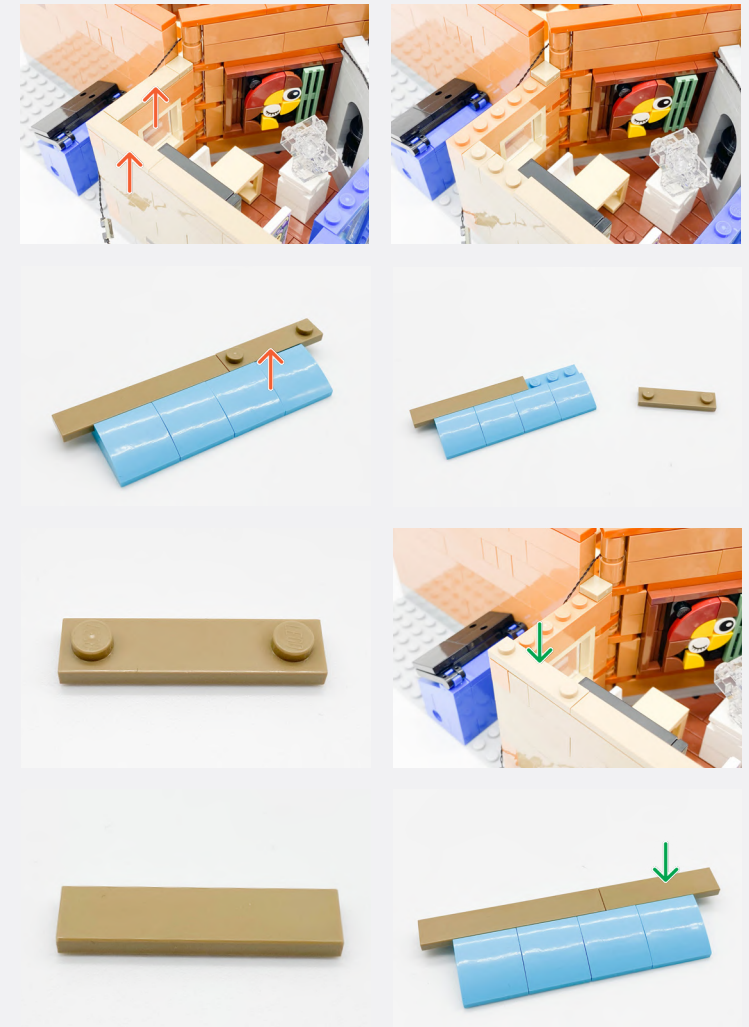
Connect the Wireless Power Connector on the single stud as shown and ensure the cable side is facing towards the inside of the building



2x Adhesive Squares



Legend DISCONNECT CONNECT / RECONNECT TURN / FLIP DIRECTIONAL TWIST / BRAID POWER ON TEST NOTE ICON

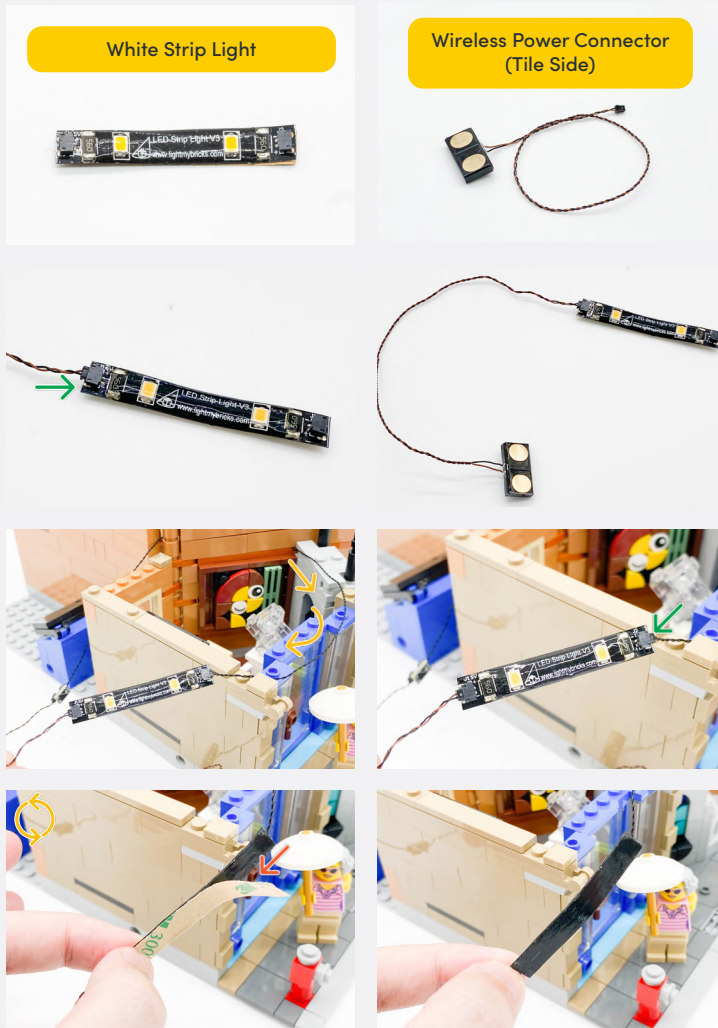


12

Legend

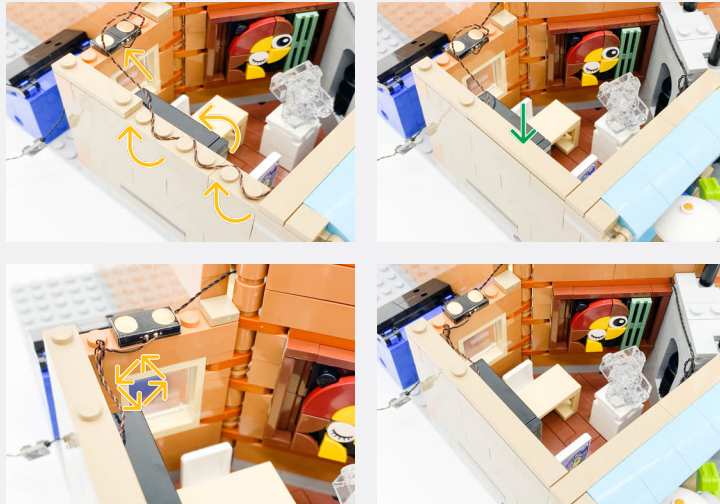
- DISCONNECT
- CONNECT / RECONNECT
- TURN / FLIP
- DIRECTIONAL
- TWIST / BRAID
- POWER ON TEST
- NOTE ICON

13



📌 Ensure the Wireless Power Connector cable is facing towards the inside of the building

Legend → DISCONNECT → CONNECT / RECONNECT ↻ TURN / FLIP → DIRECTIONAL ↻ TWIST / BRAID ✨ POWER ON TEST 📌 NOTE ICON

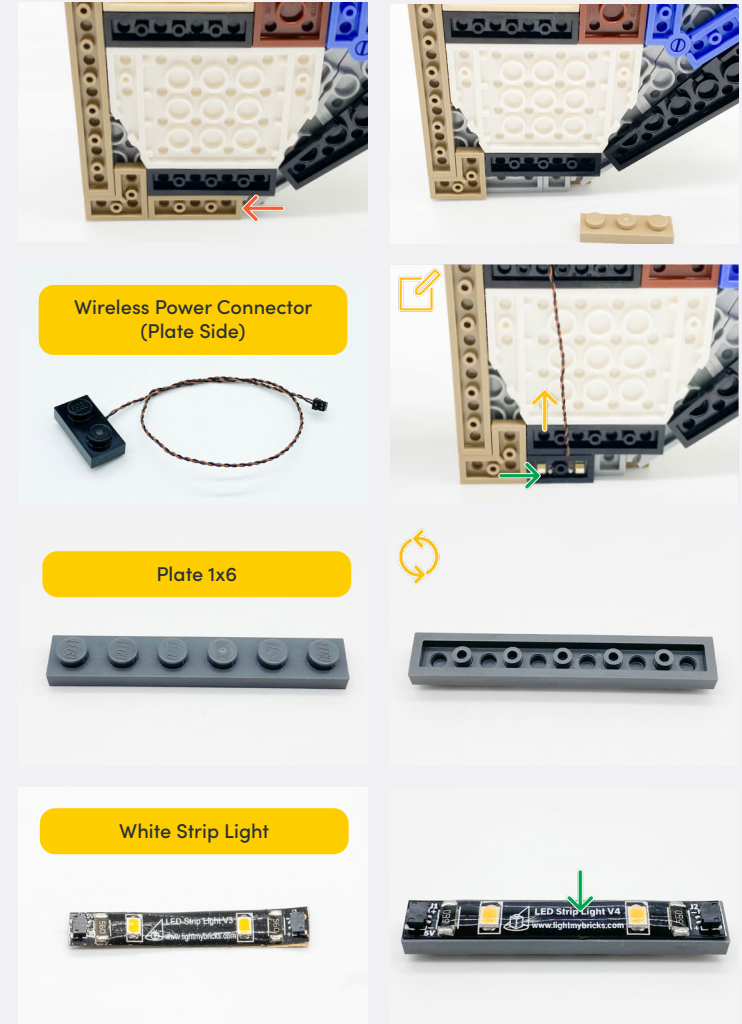


14



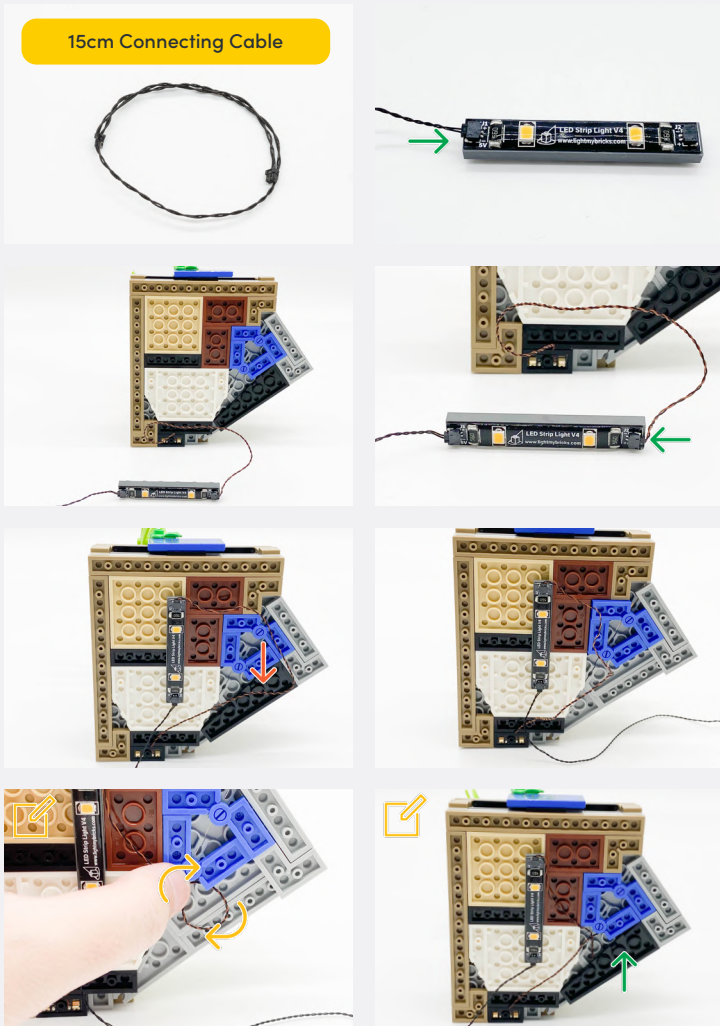
Ensure the Wireless Power Connector cable is facing towards the inside of the building

15

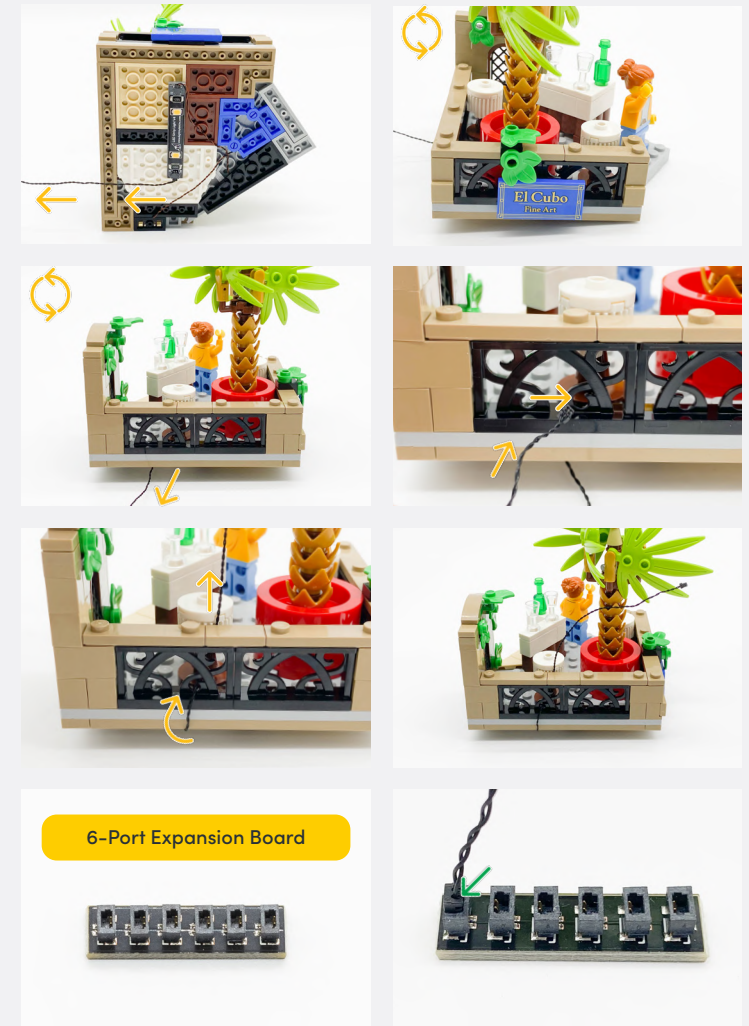


Legend

- DISCONNECT
- CONNECT / RECONNECT
- TURN / FLIP
- DIRECTIONAL
- TWIST / BRAID
- POWER ON TEST
- NOTE ICON

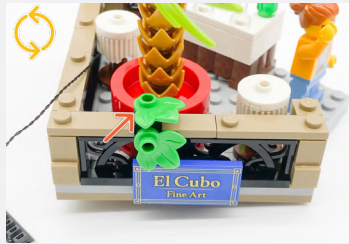


✍ Ensure the cable is shortened and not loose by securing it under the Black Plate



Legend → DISCONNECT → CONNECT / RECONNECT ↻ TURN / FLIP → DIRECTIONAL ↻ TWIST / BRAID ✨ POWER ON TEST ✍ NOTE ICON

16



2x Black 1x1 Plate Modified Plate Rounded w/ Handle



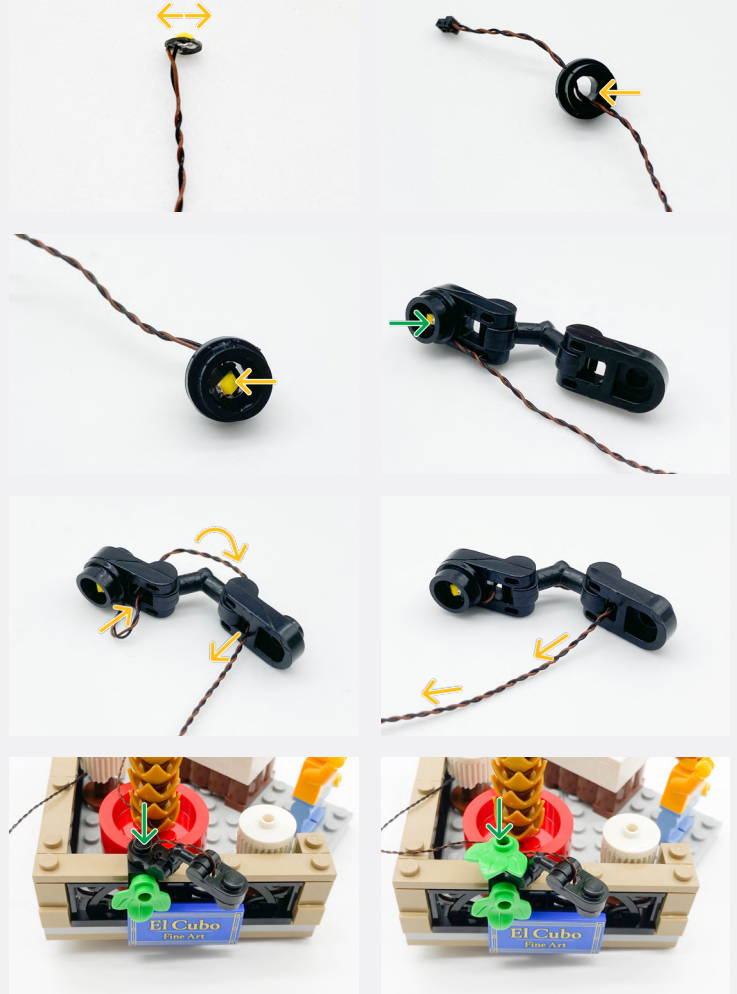
Black Arm Skeleton, Bent w Clips (Horizontal Grips)



Black Round Plate 1x1 w/ Open Stud



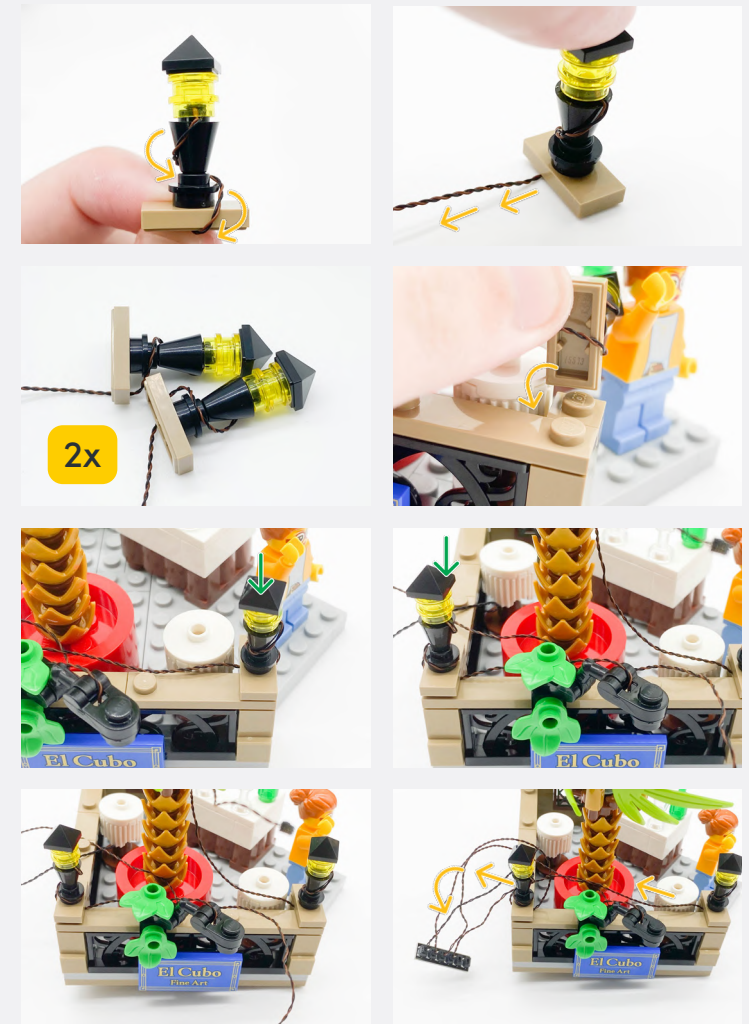
White 15cm Bit Light



Legend

- DISCONNECT
- CONNECT / RECONNECT
- TURN / FLIP
- DIRECTIONAL
- TWIST / BRAID
- POWER ON TEST
- NOTE ICON

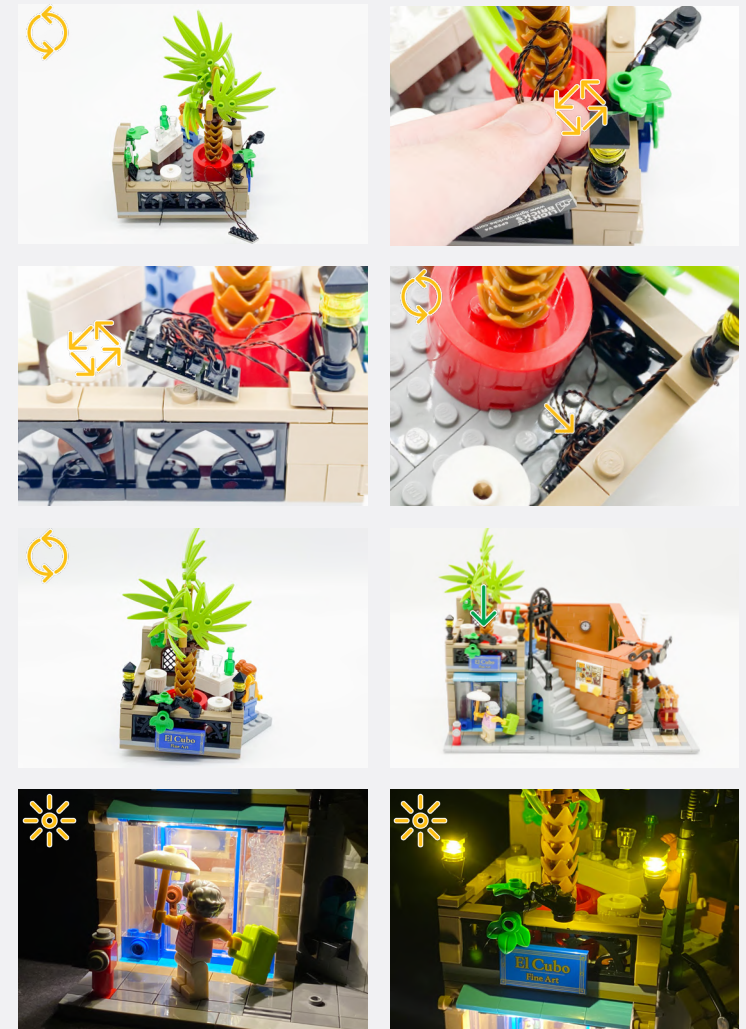
17



Legend → DISCONNECT → CONNECT / RECONNECT ↻ TURN / FLIP → DIRECTIONAL ↻ TWIST / BRAID ✨ POWER ON TEST 📝 NOTE ICON

If you experience any issues with the lights not working and suspect an issue with a component, please try a different port on the expansion board to verify where the fault lies (with the light or expansion board). To correct any issues with expansion board ports, please view the section addressing expansion board issues in our troubleshooting section.

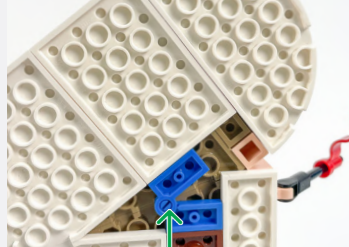
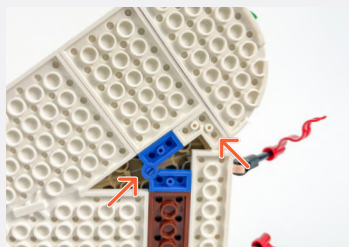
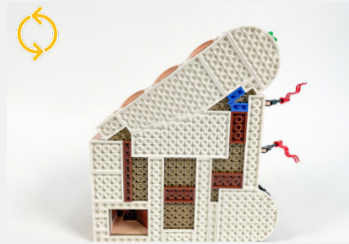
18



Legend

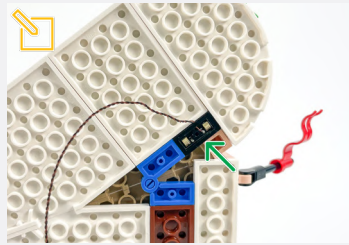
- DISCONNECT
- CONNECT / RECONNECT
- TURN / FLIP
- DIRECTIONAL
- TWIST / BRAID
- POWER ON TEST
- NOTE ICON

19



Ensure the Wireless Connector cable is facing towards the inside of the building

Wireless Power Connector (Plate Side)



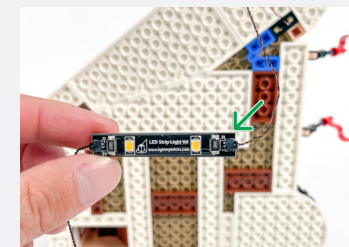
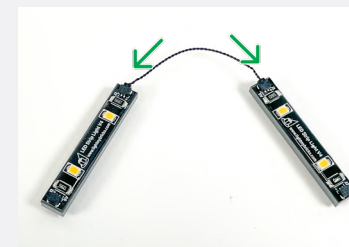
2x Warm White Strip Light



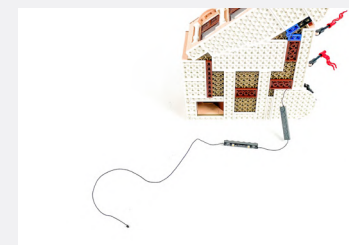
2x Plate 1x6 (Any Colour)



5cm Connecting Cable



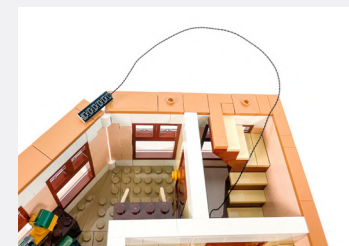
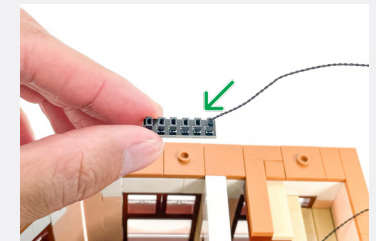
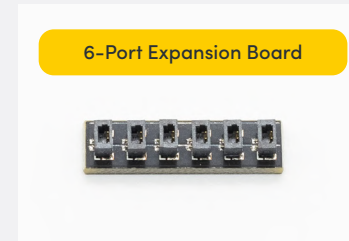
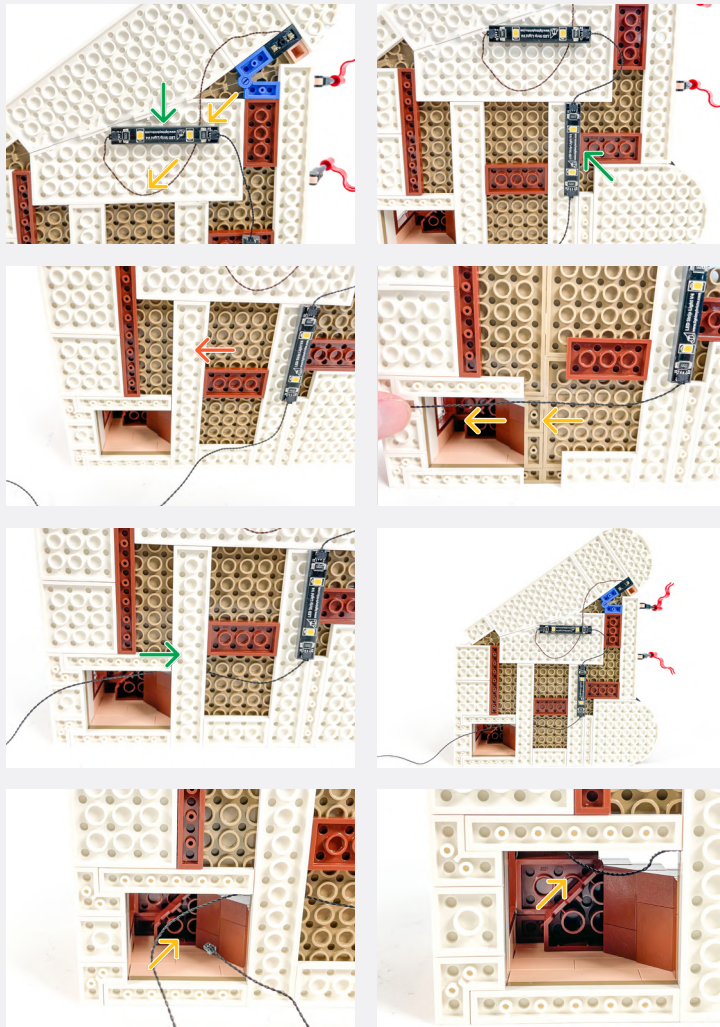
30cm Connecting Cable



Legend

- DISCONNECT
- CONNECT / RECONNECT
- ↻ TURN / FLIP
- DIRECTIONAL
- ↻↻ TWIST / BRAID
- ✦ POWER ON TEST
- 📌 NOTE ICON

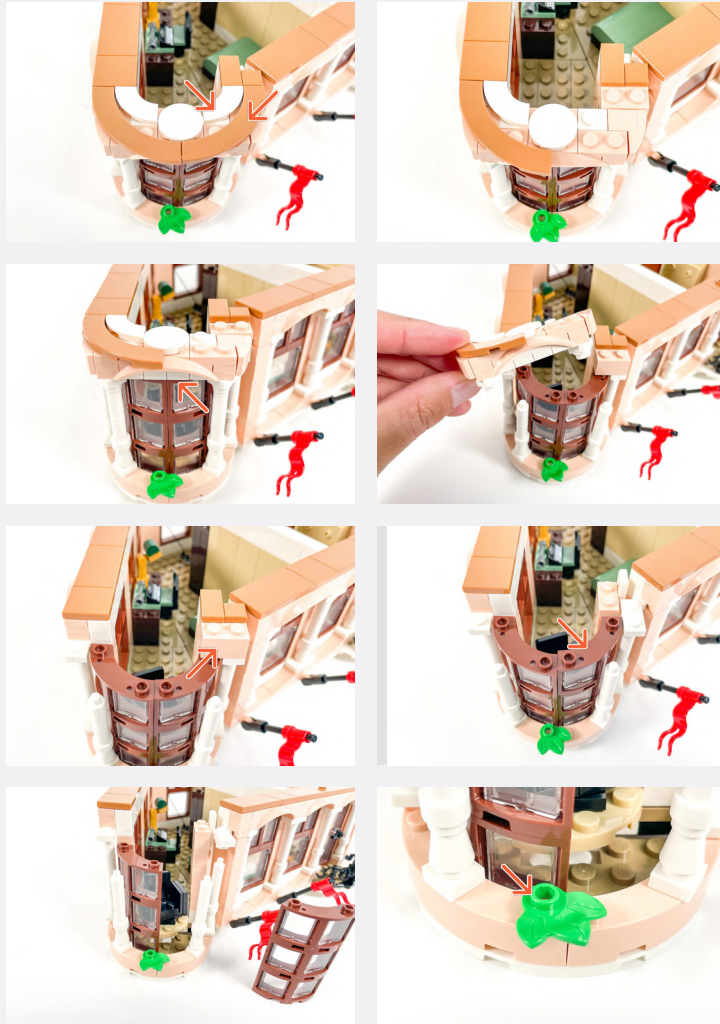
20



Legend

- DISCONNECT
- CONNECT / RECONNECT
- ↻ TURN / FLIP
- DIRECTIONAL
- ↻↻ TWIST / BRAID
- ✳ POWER ON TEST
- 📝 NOTE ICON

21



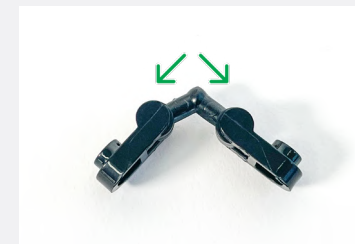
22



Black 1x1 Plate Modified Plate Rounded w/ Handle x2



Black Arm Skeleton, Bent w Clips (Horizontal Grips)



White 30cm Bit Light

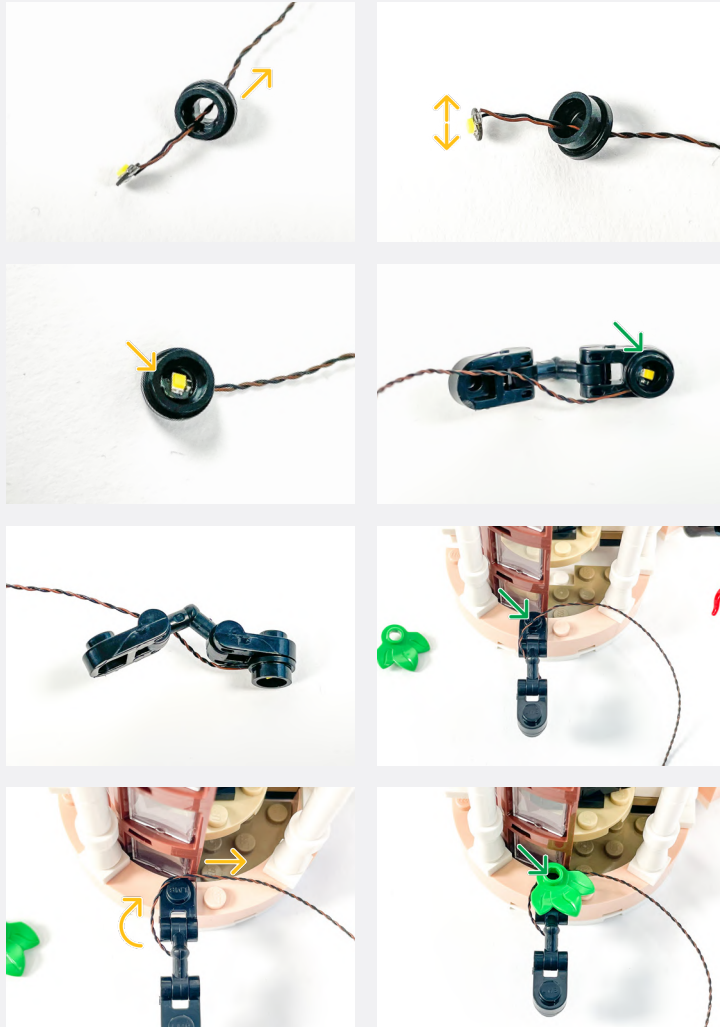


Black Round Plate 1x1 w/ Open Stud

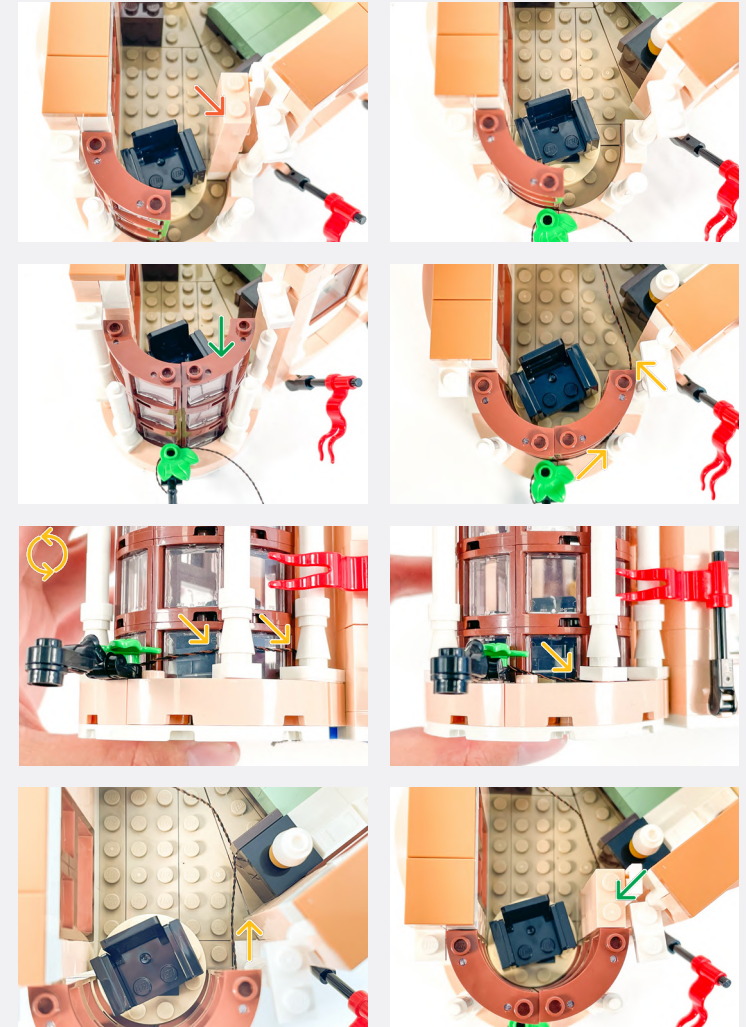


Legend

- DISCONNECT
- CONNECT / RECONNECT
- TURN / FLIP
- DIRECTIONAL
- TWIST / BRAID
- POWER ON TEST
- NOTE ICON

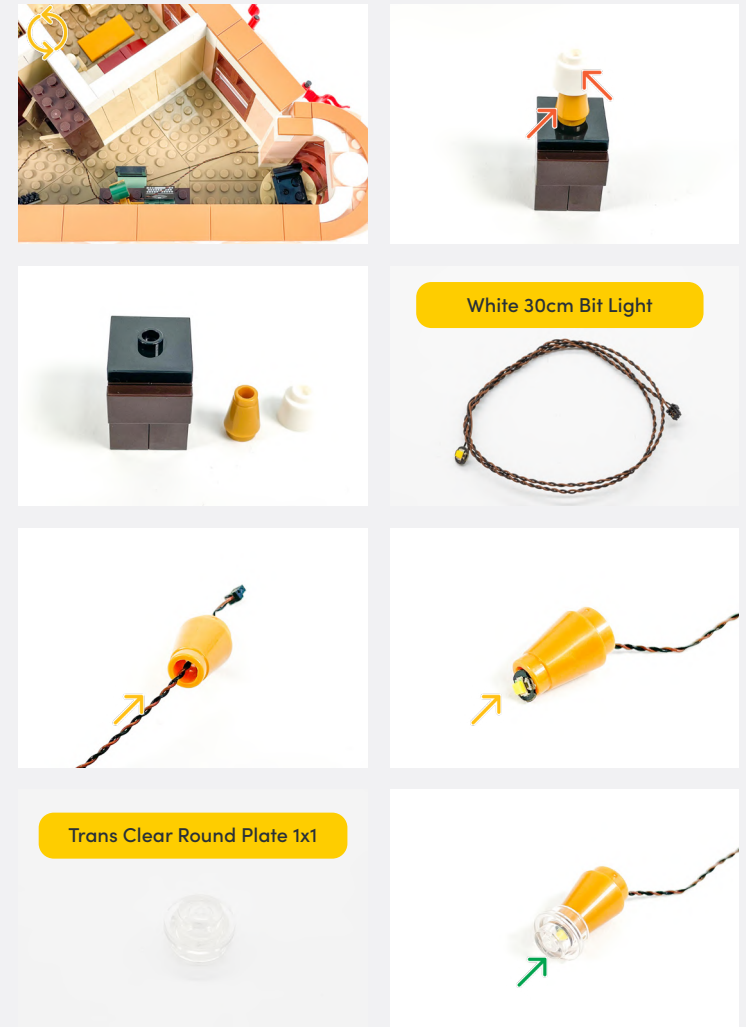
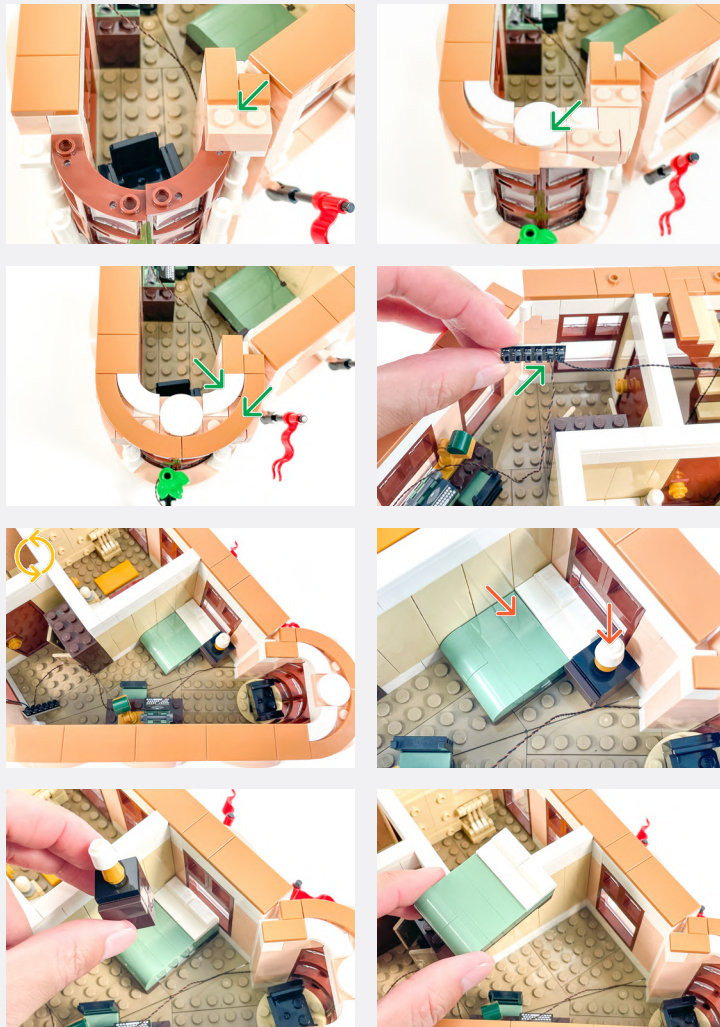


23



Legend → DISCONNECT → CONNECT / RECONNECT ↻ TURN / FLIP → DIRECTIONAL ↻ TWIST / BRAID ✨ POWER ON TEST 📝 NOTE ICON

24

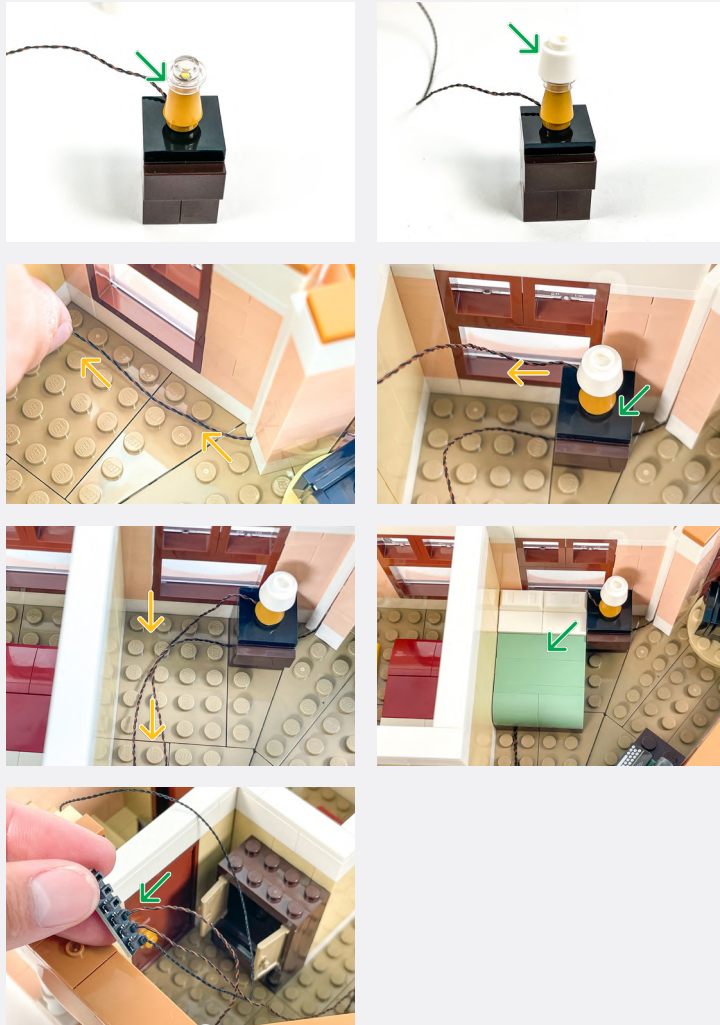


White 30cm Bit Light

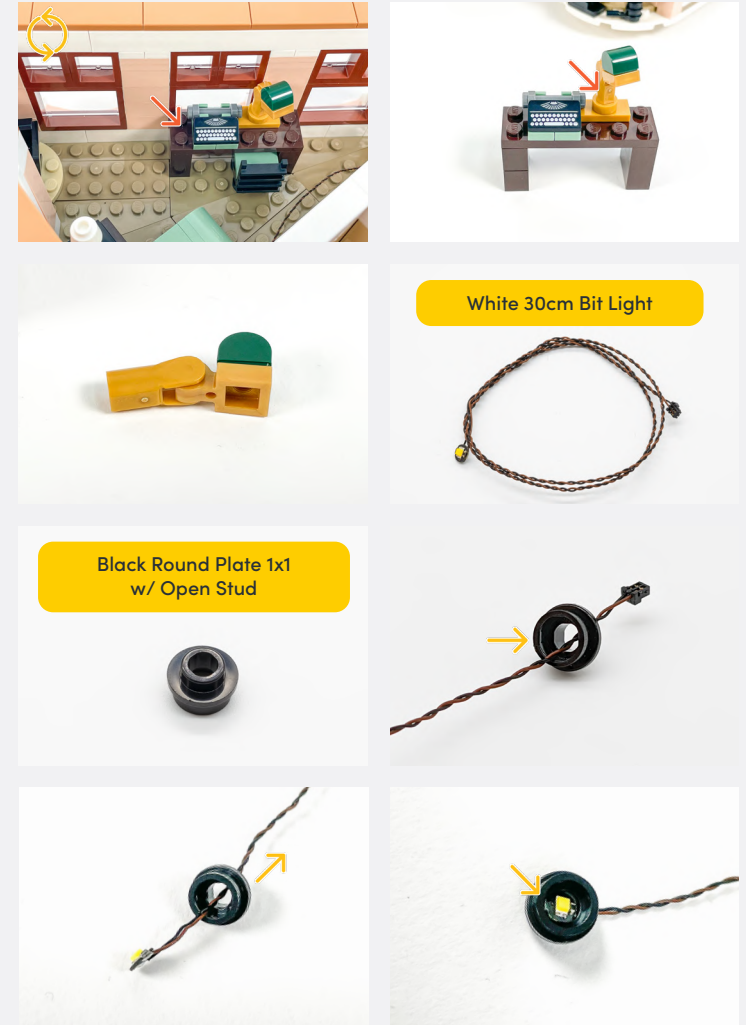
Trans Clear Round Plate 1x1

Legend → DISCONNECT → CONNECT / RECONNECT ↻ TURN / FLIP → DIRECTIONAL ↻ TWIST / BRAID * POWER ON TEST 📝 NOTE ICON

25



26



Legend

- DISCONNECT
- CONNECT / RECONNECT
- TURN / FLIP
- DIRECTIONAL
- TWIST / BRAID
- POWER ON TEST
- NOTE ICON




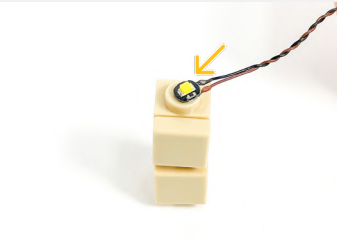


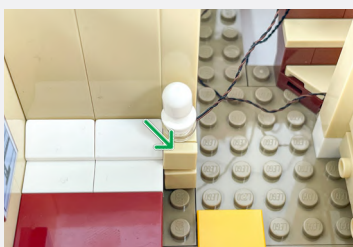
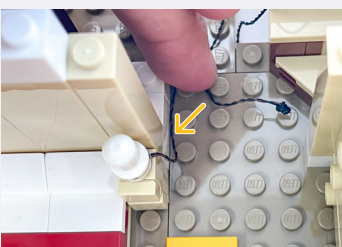


27





Legend → DISCONNECT → CONNECT / RECONNECT ↻ TURN / FLIP → DIRECTIONAL ↻ TWIST / BRAID * POWER ON TEST 📝 NOTE ICON

28

<p>Trans Clear Round Plate 1x1</p> 	
<p>White Round Plate 1x1 w/ Open Stud</p>	
<p>White 15cm Bit Light</p> 	
	
	

29

	
	
	
	<p>Wireless Power Connector (Tile Side)</p> 

Legend

-  DISCONNECT
-  CONNECT / RECONNECT
-  TURN / FLIP
-  DIRECTIONAL
-  TWIST / BRAID
-  POWER ON TEST
-  NOTE ICON

30

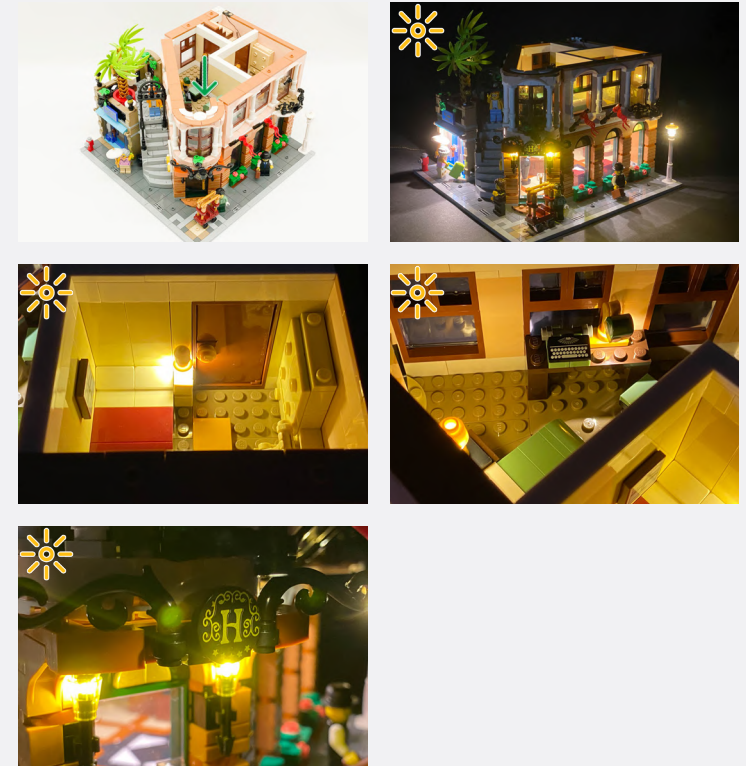


Legend → DISCONNECT → CONNECT / RECONNECT ↻ TURN / FLIP → DIRECTIONAL ↻ TWIST / BRAID ✨ POWER ON TEST 📝 NOTE ICON

31



Use the L plate we disconnected from underneath this floor.



Legend → DISCONNECT → CONNECT / RECONNECT ↻ TURN / FLIP → DIRECTIONAL ↻ TWIST / BRAID ✨ POWER ON TEST 📌 NOTE ICON

32



☑ Ensure the Wireless Power Connector cable is facing towards the inside of the building

Wireless Power Connector (Plate Side)



33

Plate 1x6



White Strip Light



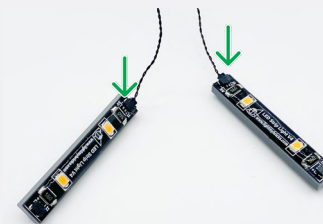
2x



15cm Connecting Cable



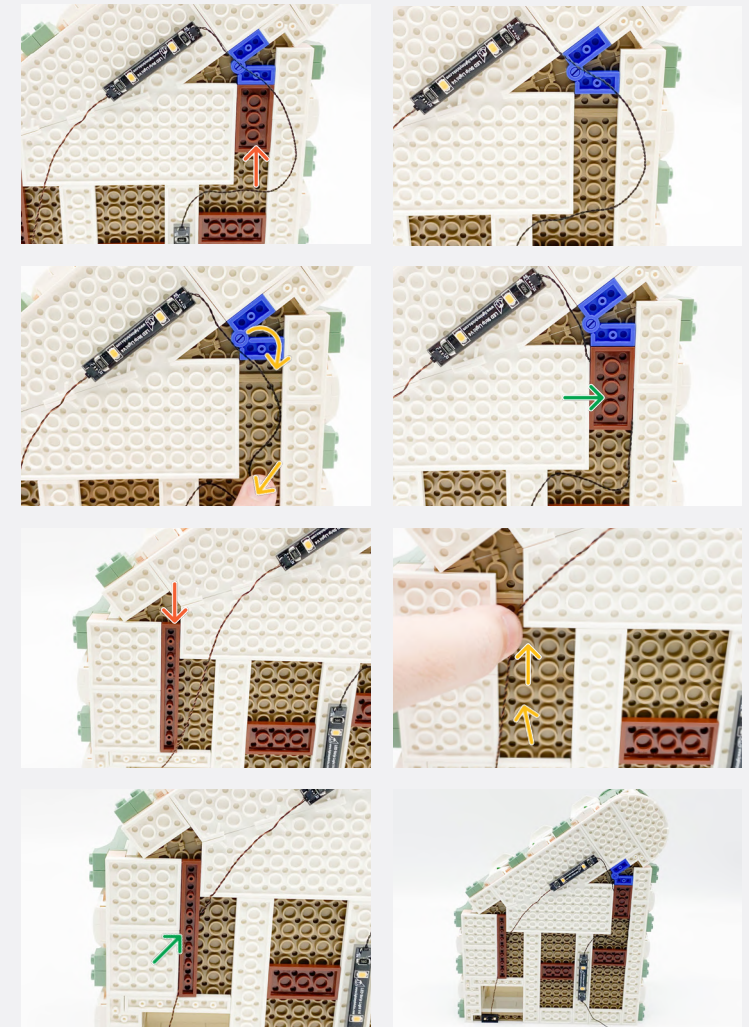
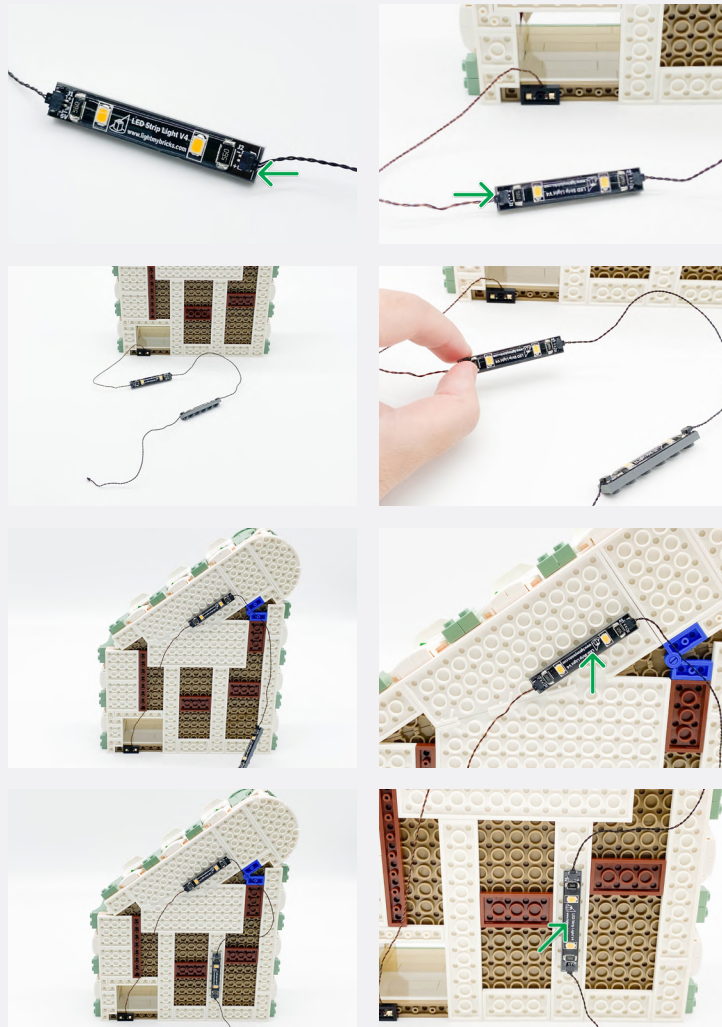
15cm Connecting Cable



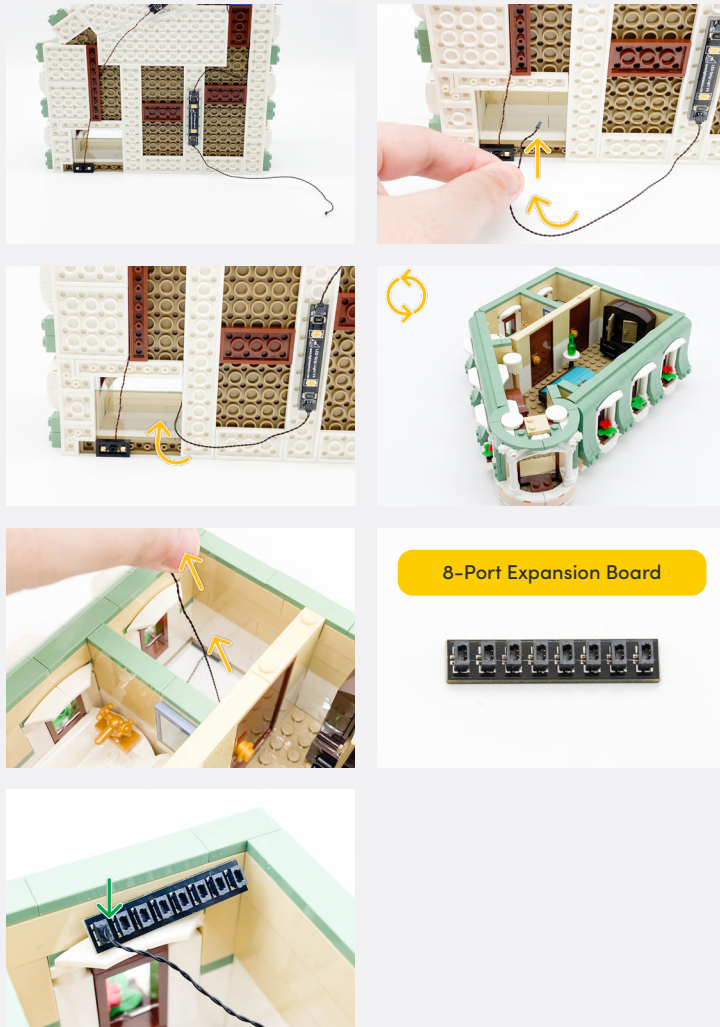
Legend

- DISCONNECT
- CONNECT / RECONNECT
- TURN / FLIP
- DIRECTIONAL
- TWIST / BRAID
- POWER ON TEST
- NOTE ICON

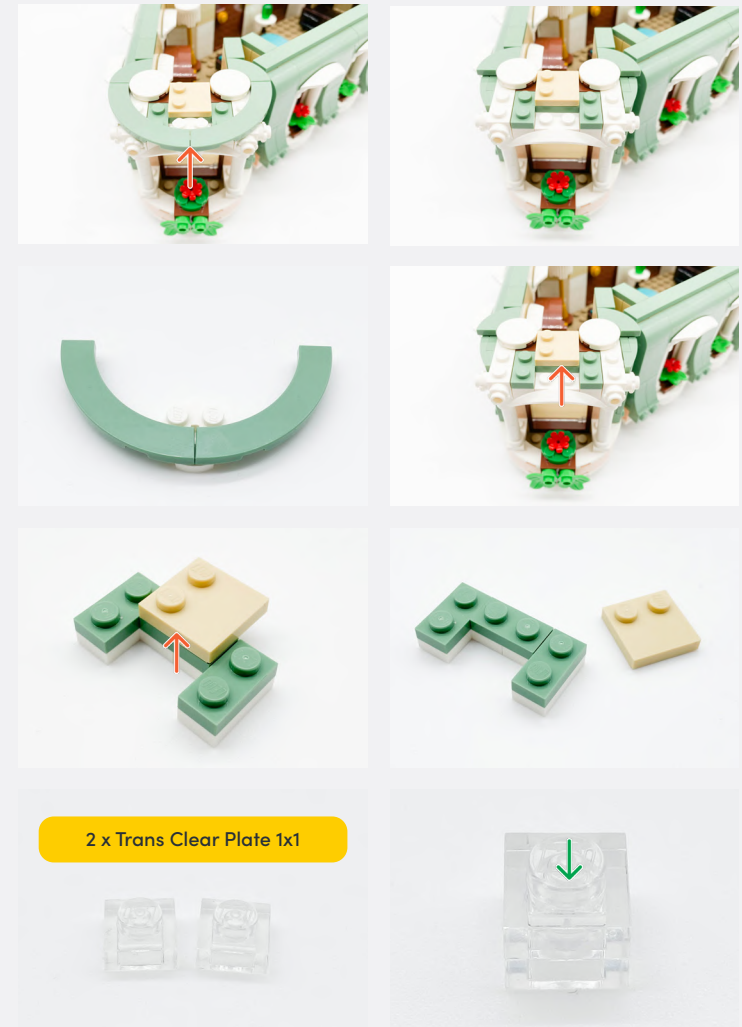
34



Legend → DISCONNECT → CONNECT / RECONNECT ↻ TURN / FLIP → DIRECTIONAL ↻ TWIST / BRAID ✨ POWER ON TEST 📝 NOTE ICON

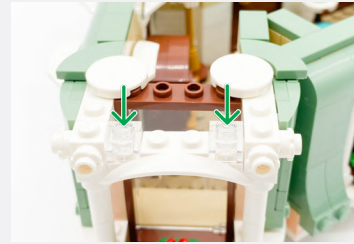


35

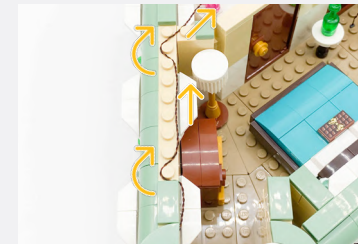
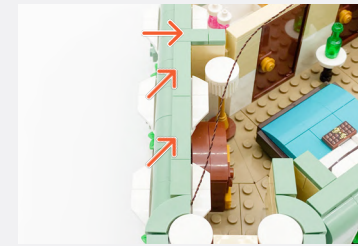
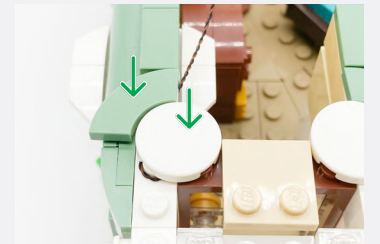
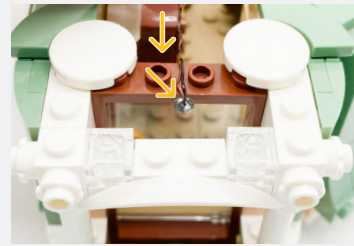


Legend → DISCONNECT → CONNECT / RECONNECT ↻ TURN / FLIP → DIRECTIONAL ↻ TWIST / BRAID ✨ POWER ON TEST 📝 NOTE ICON

36



White 30cm Bit Light

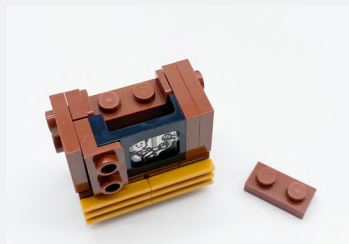
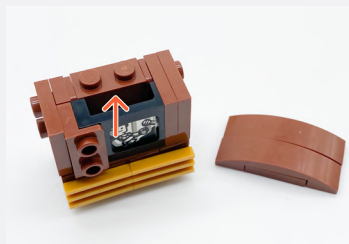
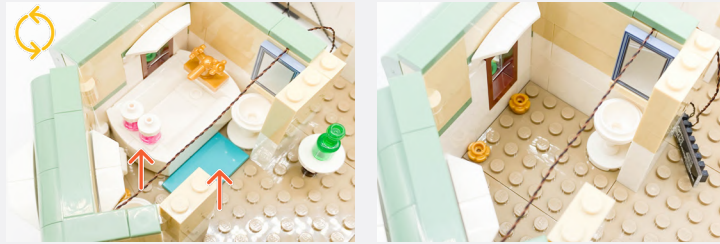


Legend → DISCONNECT → CONNECT / RECONNECT ↻ TURN / FLIP → DIRECTIONAL ↻ TWIST / BRAID ✨ POWER ON TEST 📝 NOTE ICON

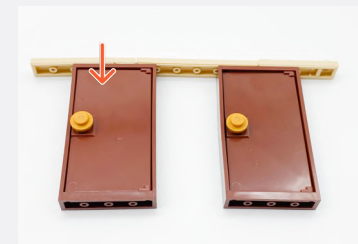
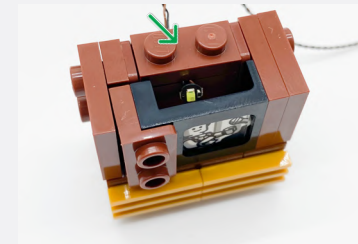
37



Legend → DISCONNECT → CONNECT / RECONNECT ↻ TURN / FLIP → DIRECTIONAL ↻ TWIST / BRAID * POWER ON TEST 📝 NOTE ICON

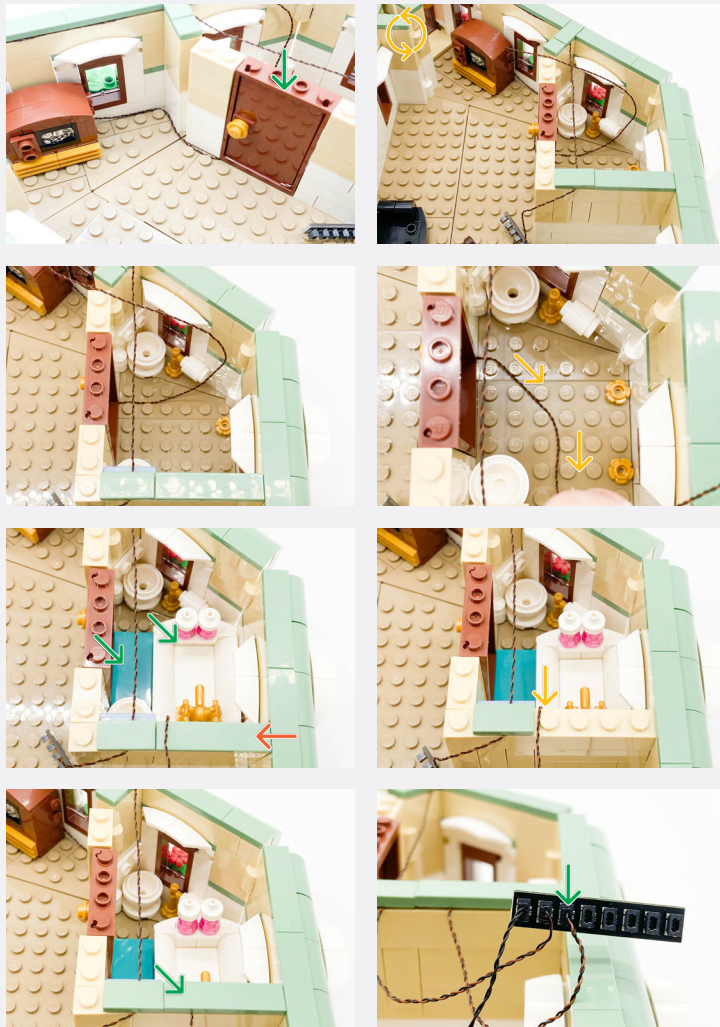


Flashing White 30cm Bit Light



Legend

- DISCONNECT
- CONNECT / RECONNECT
- ↻ TURN / FLIP
- DIRECTIONAL
- ↻↻ TWIST / BRAID
- ✳ POWER ON TEST
- 📝 NOTE ICON



39



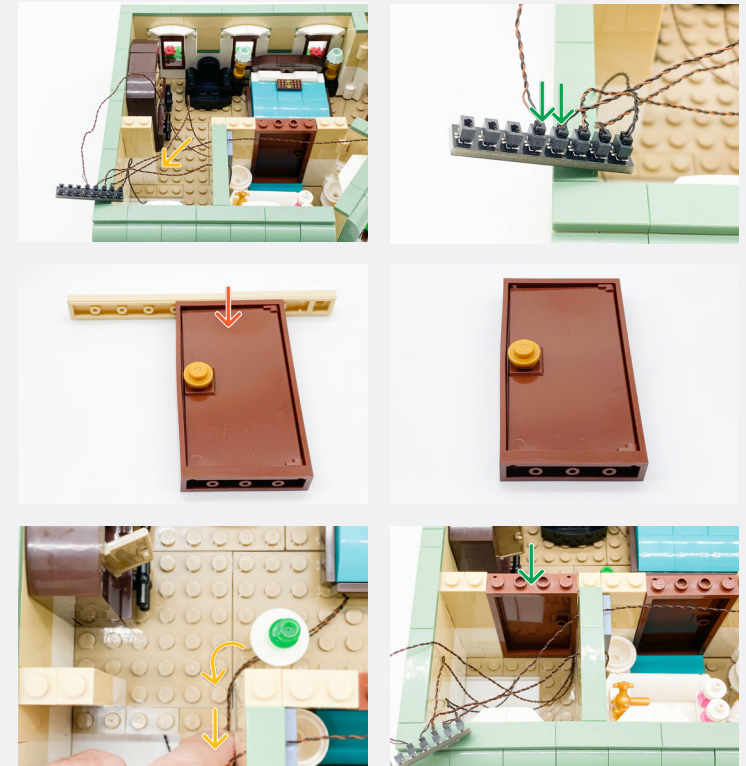
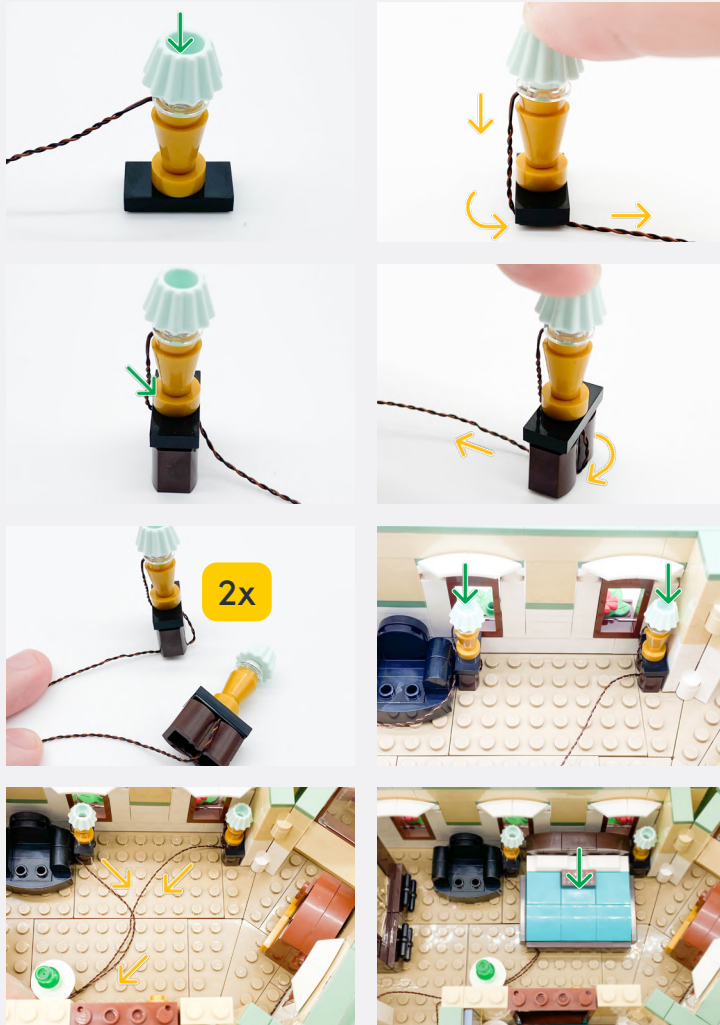
Trans Clear Round Plate 1x1



White 30cm Bit Light



Legend → DISCONNECT → CONNECT / RECONNECT ↻ TURN / FLIP → DIRECTIONAL ↻ TWIST / BRAID * POWER ON TEST 📝 NOTE ICON



Legend → DISCONNECT → CONNECT / RECONNECT ↻ TURN / FLIP → DIRECTIONAL ↻ TWIST / BRAID ✨ POWER ON TEST 📝 NOTE ICON

40

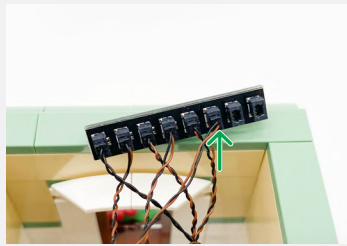


Legend

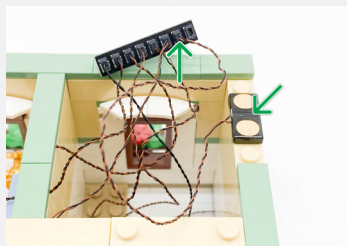
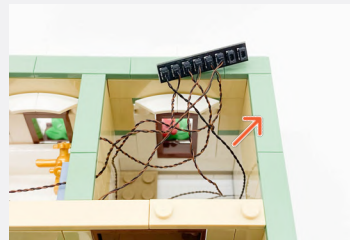
- DISCONNECT
- CONNECT / RECONNECT
- ↻ TURN / FLIP
- DIRECTIONAL
- ↔↔ TWIST / BRAID
- ✳ POWER ON TEST
- 📝 NOTE ICON

If you experience any issues with the lights not working and suspect an issue with a component, please try a different port on the expansion board to verify where the fault lies (with the light or expansion board). To correct any issues with expansion board ports, please view the section addressing expansion board issues in our troubleshooting section.

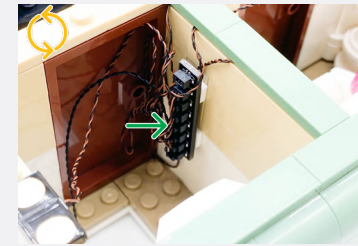
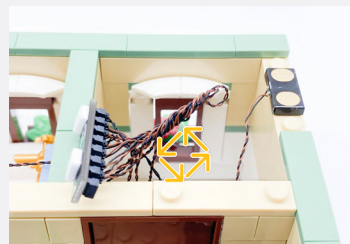
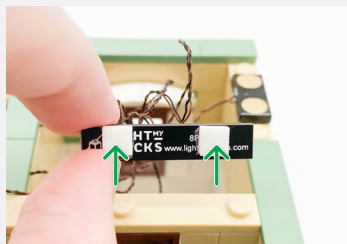
41



Wireless Power Connector (Tile Side)



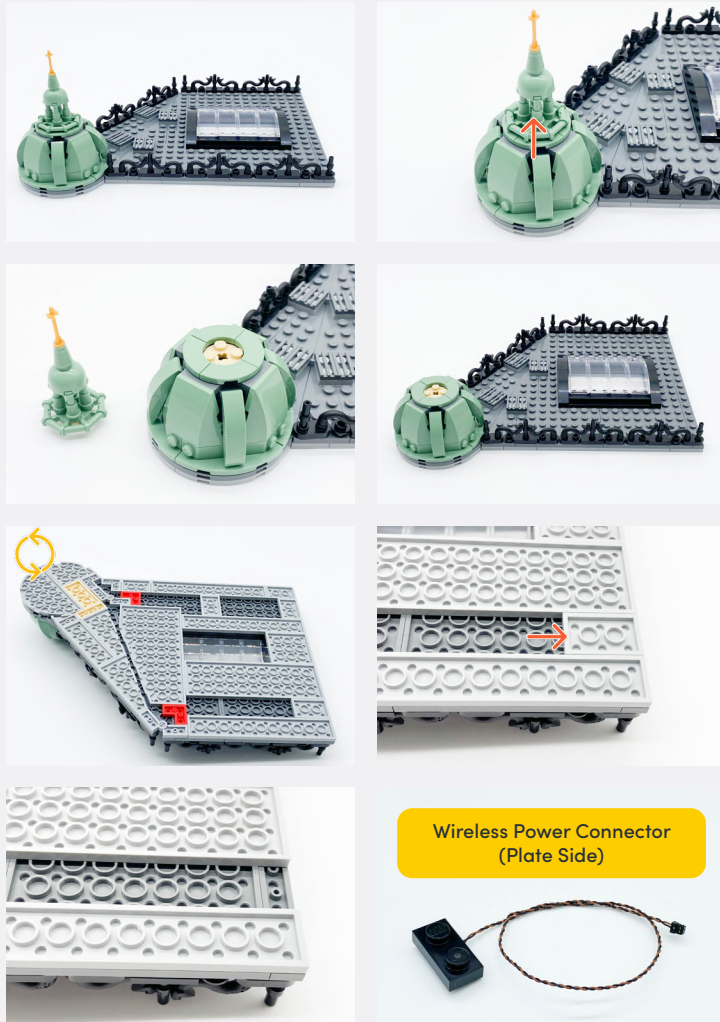
2x Adhesive Squares



Legend

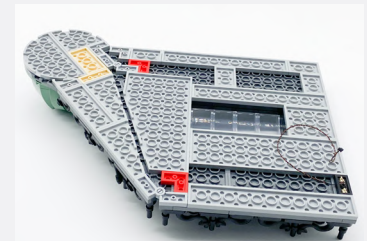
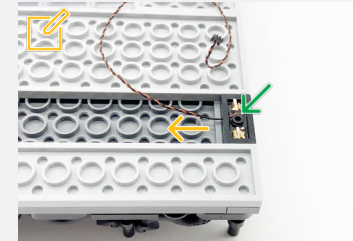
- DISCONNECT
- CONNECT / RECONNECT
- TURN / FLIP
- DIRECTIONAL
- TWIST / BRAID
- POWER ON TEST
- NOTE ICON

42



Wireless Power Connector (Plate Side)

Ensure the Wireless Power Connector cable is facing towards the inside of the building



43

Plate 1x6



White Strip Light



3x



15cm Connecting Cable



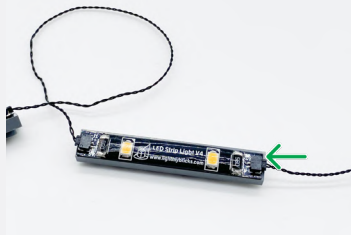
Legend → DISCONNECT → CONNECT / RECONNECT ↻ TURN / FLIP → DIRECTIONAL ↻ TWIST / BRAID ✨ POWER ON TEST 📝 NOTE ICON



5cm Connecting Cable



Connect the final Strip Light to the other end of the 5cm Connecting Cable

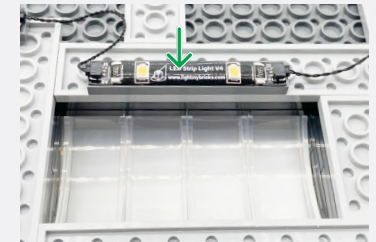
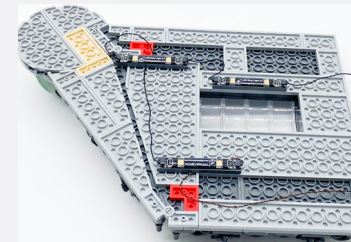
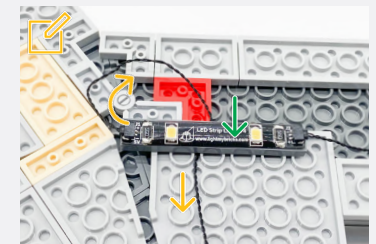
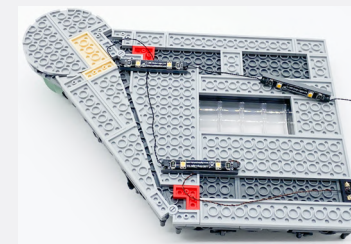
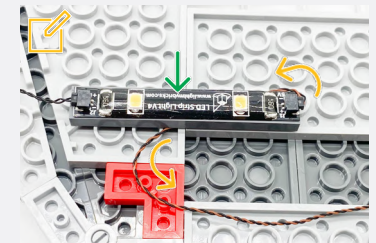
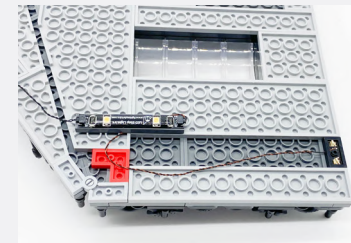
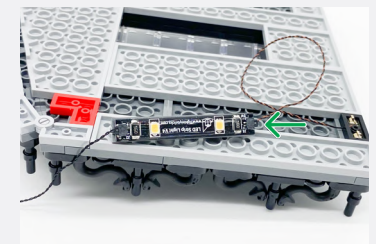
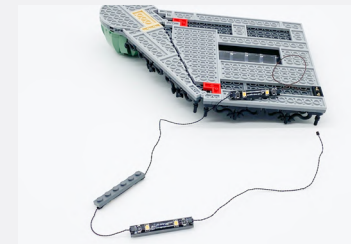


15cm Connecting Cable

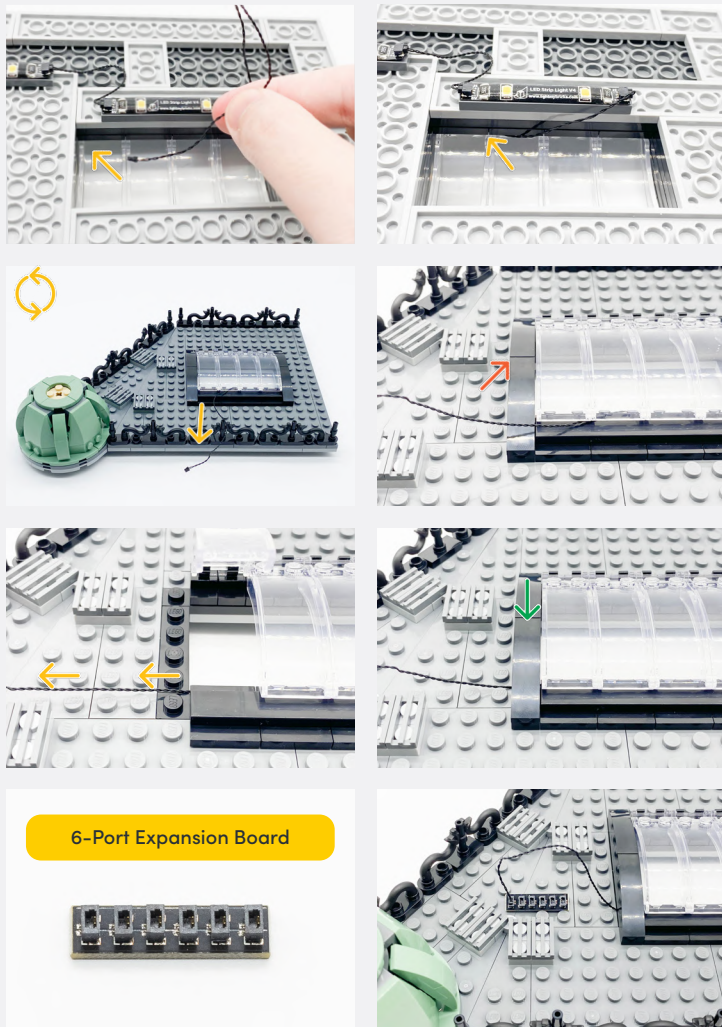


44

When placing the Strip Lights, secure the cable under to minimise visibility and floppiness.



Legend → DISCONNECT → CONNECT / RECONNECT ↻ TURN / FLIP → DIRECTIONAL ↻ TWIST / BRAID ✨ POWER ON TEST 📝 NOTE ICON



6-Port Expansion Board



45



2x Black 1x1 Plate Modified Plate Rounded w/ Handle



Black Arm Skeleton, Bent w Clips (Horizontal Grips)



Black Round Plate 1x1 w/ Open Stud



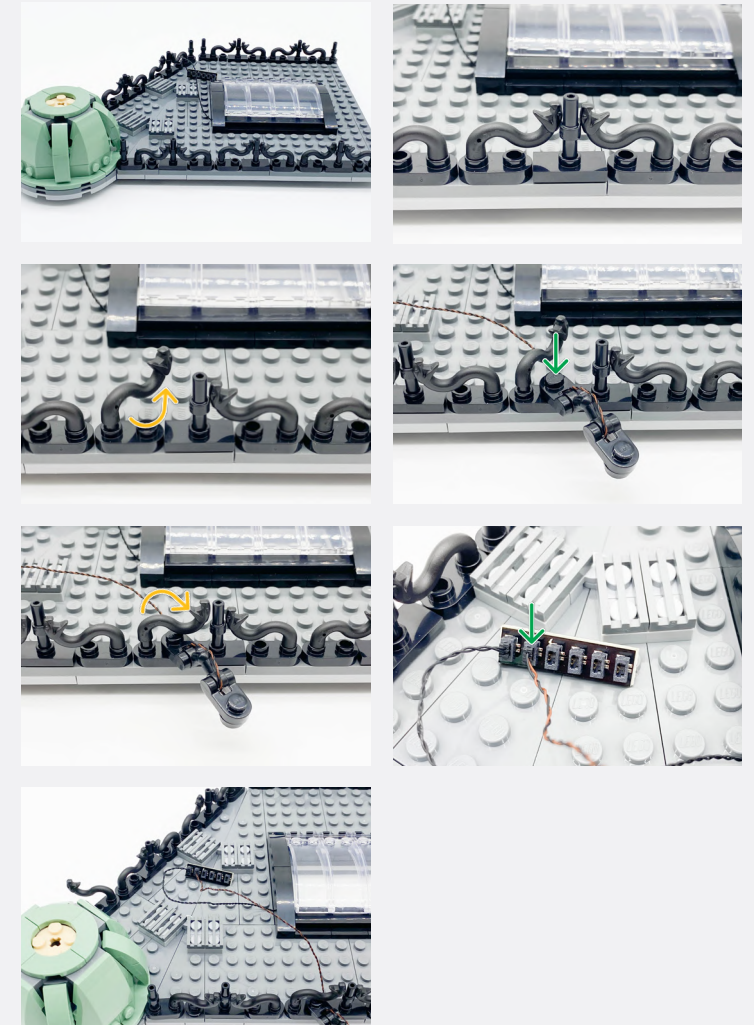
White 15cm Bit Light



Legend → DISCONNECT → CONNECT / RECONNECT ↻ TURN / FLIP → DIRECTIONAL ↻ TWIST / BRAID * POWER ON TEST 📝 NOTE ICON

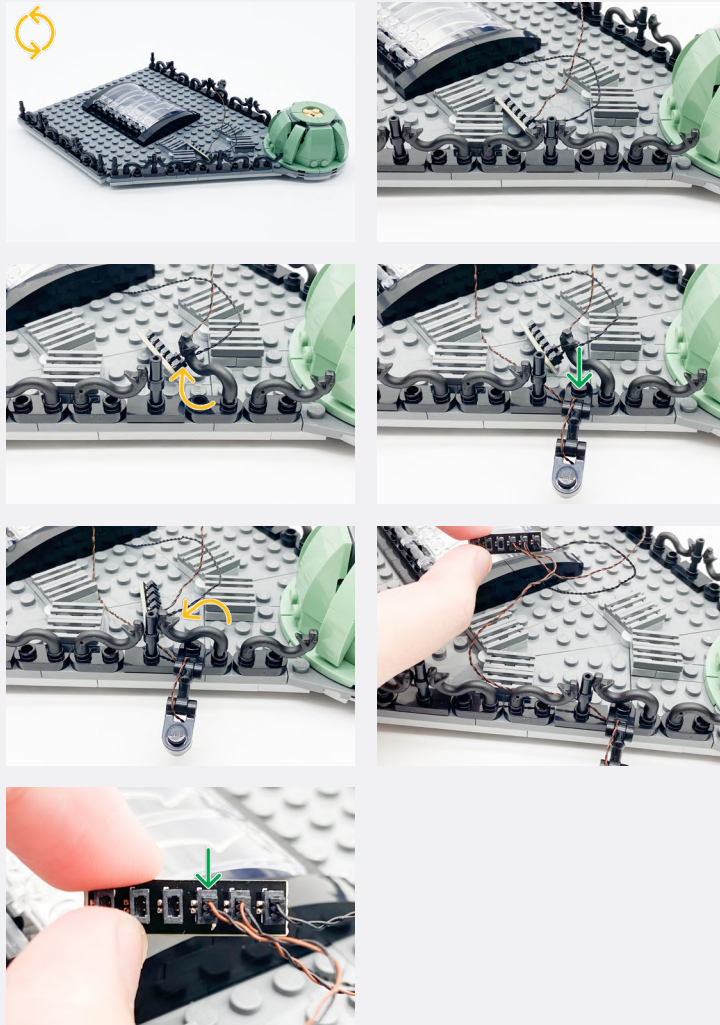


46

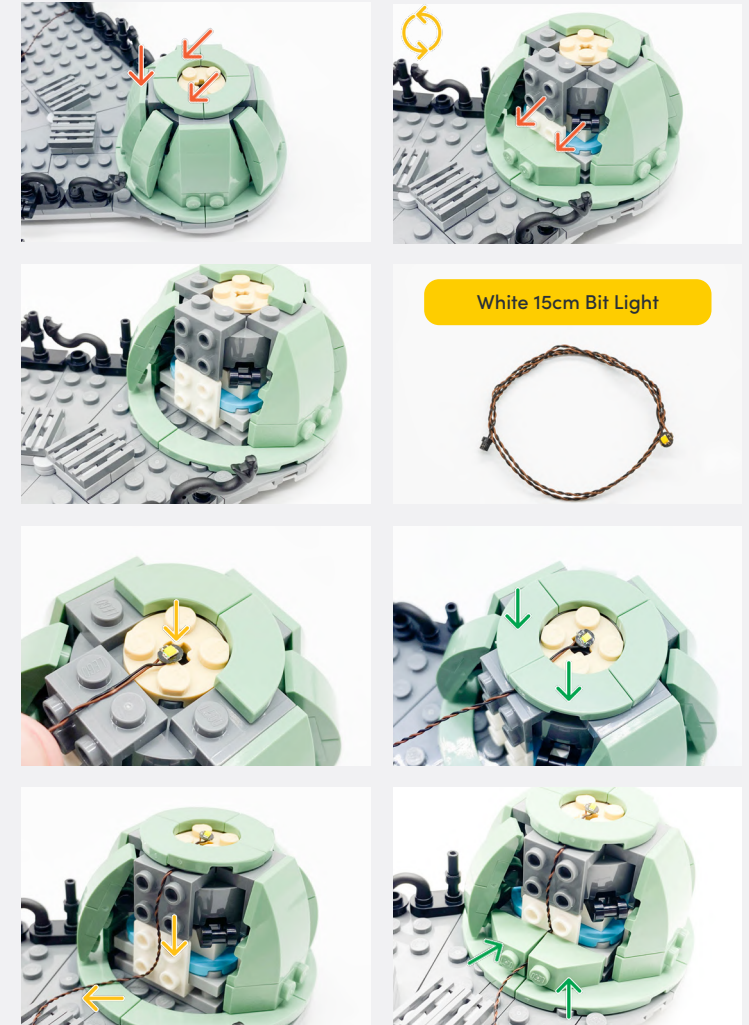


Legend → DISCONNECT → CONNECT / RECONNECT ↻ TURN / FLIP → DIRECTIONAL ↻ TWIST / BRAID ✨ POWER ON TEST 📝 NOTE ICON

47



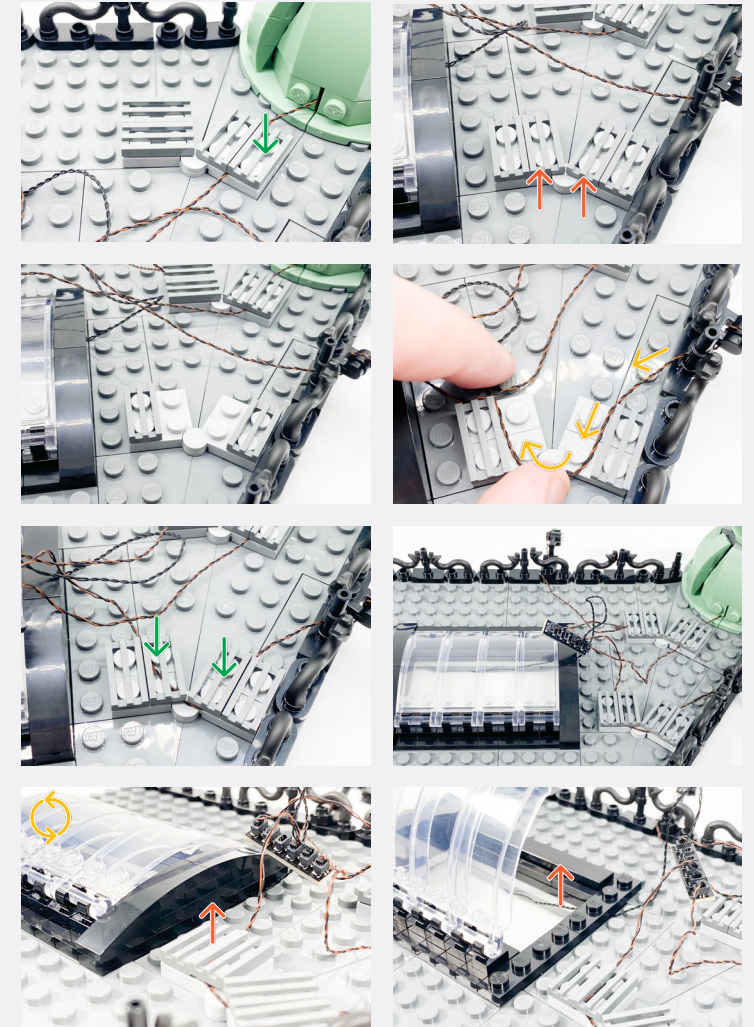
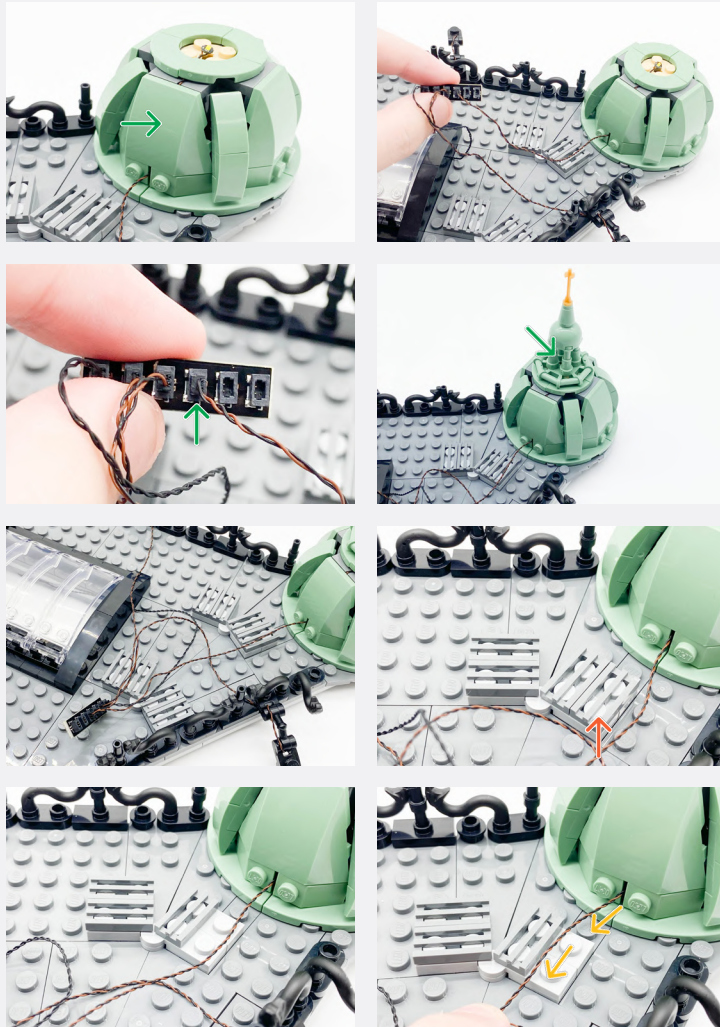
48



Legend

- DISCONNECT
- CONNECT / RECONNECT
- TURN / FLIP
- DIRECTIONAL
- TWIST / BRAID
- POWER ON TEST
- NOTE ICON

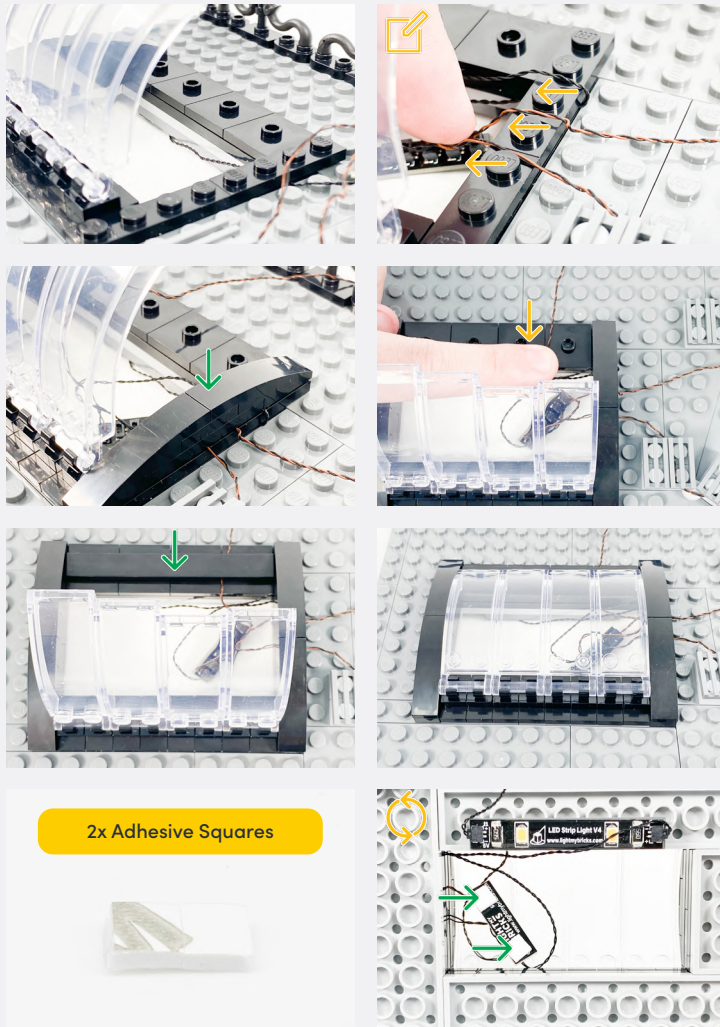
49



Legend → DISCONNECT → CONNECT / RECONNECT ↻ TURN / FLIP → DIRECTIONAL ↻ TWIST / BRAID ✨ POWER ON TEST 📝 NOTE ICON

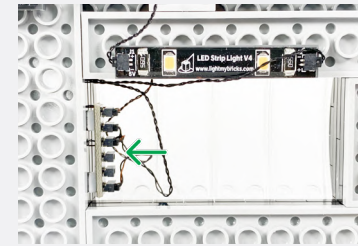
If you experience any issues with the lights not working and suspect an issue with a component, please try a different port on the expansion board to verify where the fault lies (with the light or expansion board). To correct any issues with expansion board ports, please view the section addressing expansion board issues in our troubleshooting section.

Secure the Bit Light from the Spire, the Spotlight from Step 47 and the Connecting Cable



2x Adhesive Squares

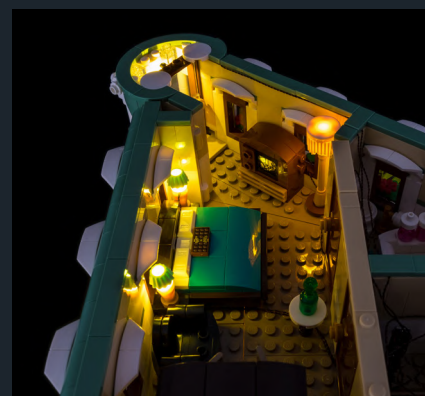
50



Legend DISCONNECT CONNECT / RECONNECT TURN / FLIP DIRECTIONAL TWIST / BRAID POWER ON TEST NOTE ICON

FINAL PRODUCT

This finally completes installation of the Light My Bricks Boutique Hotel 10297 Light Kit.





TROUBLESHOOTING

Light My Bricks lighting kits contain individual components that are very small and can be easily damaged if not handled correctly.

To prevent unnecessary damage to components, we highly recommend that the User Guide section, **“Important things to note”** is read carefully. Follow the handling procedures in the User Guide to help prevent faults and damages to your Light My Bricks components.

If you are experiencing issues with your Light My Bricks set, watch our troubleshooting video or read on for a list of common causes to help you troubleshoot.

Troubleshooting

Firstly, ensure that the batteries have power using a battery charge gauge.

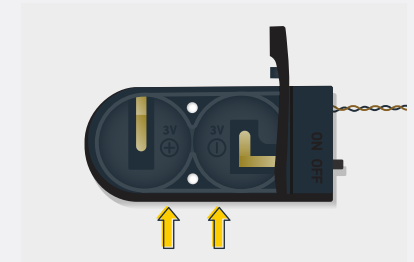
If the batteries have no power, replace the batteries.

If the batteries still have power, check to see if the batteries have been inserted correctly into the battery pack.

Check For CR2032 Batteries Using The Flat Battery Pack

Inside the battery pack is a symbol indicating which side the (round) CR2032 battery should be inserted. Check that the “+” side of the battery pack has the battery with the “+” symbol facing downwards.

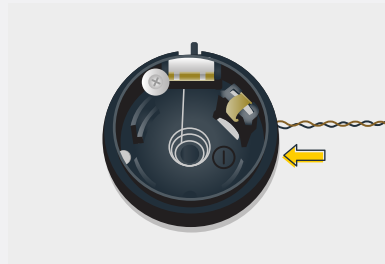
On the opposite side, the “-” side of the battery pack should have the battery flipped upside down, that is the “+” symbol facing upwards.



Troubleshooting

Check For Cr2032 Batteries Using The Round Battery Pack

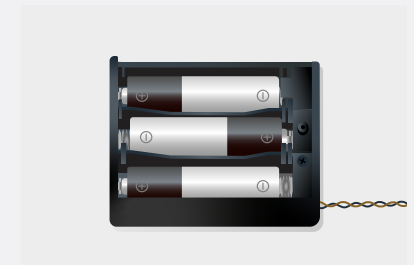
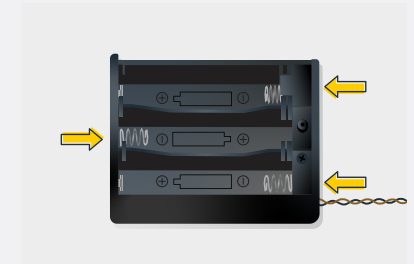
Inside the battery pack is a symbol indicating which side the (round) CR2032 battery should be inserted. In this case, for the stacked battery pack, ensure that BOTH batteries have the “+” symbol facing upwards.



Check for AA batteries using the AA battery pack

Inside the battery pack are symbols indicating which direction the AA battery should be inserted. The flat side of the battery should be paired with the spring side of the battery pack.

If the batteries have been installed correctly and your kit still isn't operating correctly, the next step is to check the wiring.



Troubleshooting

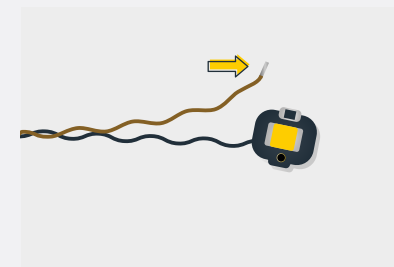
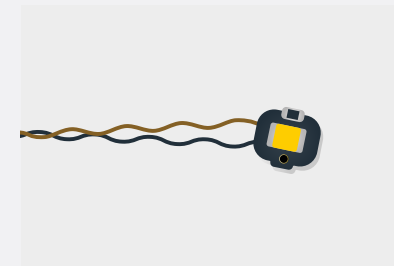
Check Your Wires

In order for Light My Bricks components to fit in between and underneath LEGO® bricks, the components need to be very small. Due to this nature, Light My Bricks components can be easily damaged when not handled correctly.

Be careful when removing unpacked components out of the packaging and ensure not to forcibly pull at the wires as this can damage the soldering that attach the wires to the LEDs.

If the wiring is detached from the LED itself, the light will not operate.

When connecting lights to your LEGO set, check that there are no pinched wires underneath or in between bricks and plates. When the wires are pinched and the exposed wires are touching each other, this can cause a crosswire and the lights to not function correctly.



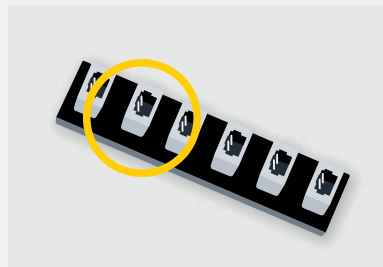
Troubleshooting

Check Your Expansion Board Ports/ Strip Light Ports / Effects Board Ports

It is important to note that connectors can only be inserted to the expansion board, strip light, or effects board ports in one direction.

Forcibly inserting connectors in the incorrect direction will result in damaging the pins inside each of the ports on your component board.

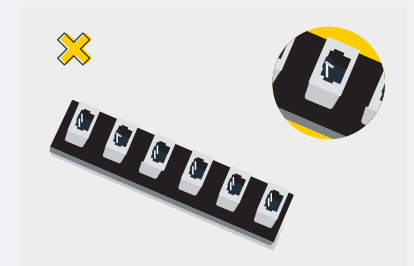
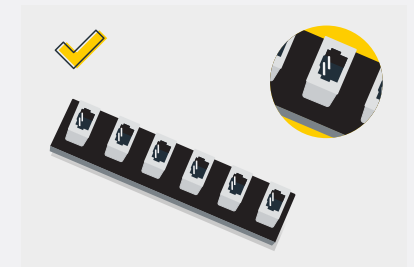
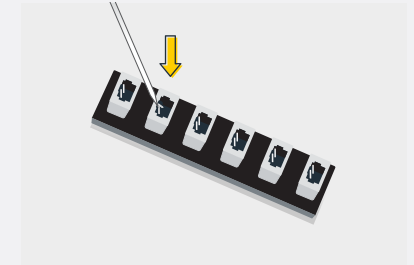
Not only will a light connected to the damaged port not work, but if the pins inside the port are bent to a point they are touching each other, this can result in all other lights in the system to stop working. This is a short circuit.



A short circuit can also result in overheating of the board, cable or batteries. If you suspect a short circuit, **DISCONNECT POWER IMMEDIATELY**. Batteries can fail, catch fire, or even explode if left connected to a short circuit for too long.

If you suspect you have a faulty component due to a bent pin, try the following steps:

If you look carefully inside each of the ports, each port contains 2 small pins that should be straight. You will be able to identify a faulty port if it has any bent pins.





CONTACT US

If you have an enquiry regarding the online shop, our products or a general enquiry please refer to our Frequently Asked Questions webpage.

Alternatively, you can contact our Customer Services team by visiting our online support portal.

support.lightmybricks.com

We thank you for purchasing this product and hope you enjoy!



lightmybricks.com